

The logo features a stylized, abstract graphic on the left consisting of several curved, concentric lines that resemble a spiral or a stylized 'M'.

MUNDARING ARTS CENTRE



ANNUAL REPORT
2016

TABLE OF CONTENTS

Executive Summary	3
Chairperson's Report	4 + 5
Director's Report	6
Treasurer's Report	7
Finance Report	8 - 9
Auditor's Report	10 + 11
Exhibition Program	12 - 17
Public Program	18 - 24
Consultancy	25
Shop + Statistics	26
Thank you	27 + 28

Cover image: Creating with 1890's Singer vibrating shuttle, hand crank sewing machines on loan from the Collections of Charles Lithgow and Marie Jacquier - *Machines + Makers*

MUNDARING ARTS CENTRE INC

7190 GREAT EASTERN HWY MUNDARING WA 6073

WWW.MUNDARINGARTSCENTRE.COM.AU

EXECUTIVE SUMMARY

The Mundaring Arts Centre (MAC), founded in 1979, is a not-for-profit incorporated community arts organisation providing autonomous, professionally presented and curated arts and cultural programs.

MAC TODAY

- Delivers a culturally sustainable, creative business that contributes to the prosperity of the region and enriches the cultural experience of the community
- Actively engages a broad cross section of the community in cultural practices
- Attracts committed volunteers that expand the capacity of the Centre
- Is recognised nationally for best practice community arts and excellence in visual arts
- Provides arts leadership, advocacy and advisory services for individuals and organisations
- Nurtures community involvement and participation, providing a focus for arts and cultural development within the eastern region
- Has established networks, relationships, membership base and procedures
- Engages participants, spectators and creators in transformative arts experiences
- Stimulates increased creativity, imagination, skills and knowledge
- Activates and develops strong partnerships with groups, schools, businesses and funding bodies
- Is able to respond quickly to new situations and opportunities

MAC ANNUALLY

- Presents the work of over 400 artists to an audience of approx. 20,000
- Contributes around \$700,000 back to our community
- Engages over 6,000 public program participants
- Attracts over 10,000 visitors to the Gallery and Shop in the heart of Mundaring
- Delivers place activation, public art projects and collection management for the Shire of Mundaring and the City of Swan

MISSION STATEMENT

Our mission is to nurture the growth and diversity of an interactive environment that fosters arts and culture as integral to the well-being of our community and the surrounding regional areas.

MAC aims to:

- Provide ongoing successful arts and culture services that engage creators and community
- Increase accessibility, capacity and capability
- Increase partnering and collaboration with other arts and cultural organisations and enhance business sustainability, effectiveness, efficiency and outcomes

CHAIRPERSON'S REPORT

I've just looked over the report I made in April last year which was frankly the most gloomy and despondent few words I've ever presented. It was all about de-funding, lousy government decisions and the parlous state for arts and culture generally.

How things have changed. And curiously, what changed was not specific financial investment from any of the three tiers of government. It was the rise of the spirit of our community; the exceptional quality of our dedicated volunteers; the intrepid board members who support this Centre and the committed staff who are the glue that holds it all together.

To provide some context for this report, I'd like to touch on the core goals of the Mundaring Arts Centre and then talk a little about how we address them.

1. Promote arts and culture for all
2. Nurture creativity
3. Provide arts leadership
4. Foster creative spaces

2016 was a year of exceptional growth. I've chosen to illustrate our commitment to these strategic goals through two projects that each address all four of the core goals.

The first is MAKE YOUR MARK.

We were invited by the City of Swan to prepare a proposal for community engagement workshops. This resulted in *Make Your Mark*, jointly funded by the City of Swan and Healthway's Act-Belong-Commit, which attracted over 6,000 participants during the year and reached young children, primary and high school children as well as adults. It was a great precursor to MAC's next big adventure, the management of the Midland Junction Arts Centre, which begins now.

The second is MACHINES + MAKERS.

I'm slightly reluctant to talk about this one as it was my particular baby. But as with all healthy newborns it rapidly outgrew the parent and became its own miraculous being. *Machines + Makers* became three exhibitions, a huge series of workshops, a community engagement project and a public Open Day. It brought together many of our great community groups – gave us all an excuse to get to know each other better and to create something collectively that we could only dream about as individual organisations. *Machines + Makers* brought new audiences and participants and nearly 4,000 people to Mundaring over its time creating an enormous buzz in and around MAC. It has become a pattern from which we learned and will continue to expand.

In terms of nurturing creativity – Mundaring Arts Centre provided paid employment for 60 artists over 2016 and represented 150 artists in the Gallery Shop.

CHAIRPERSON'S REPORT CONTINUED

We were also fortunate to attract some funding from the Commonwealth Department of Infrastructure and Regional Development with matched funds from the Shire of Mundaring that enabled much-needed repairs and a great paint job to enhance our building. Sprucing up the space we all love is important both for those who work here and those who visit and exhibit here.

I am confident that the Mundaring Arts Centre is well placed through its staff, board and volunteers to continue the good work as we go into a new future with an enlarged footprint at the Midland Junction Arts Centre.

I want to assure all of you that the work at this space itself will continue in quality and volume and through the excellent management of Jenny Haynes and her team will continue to make us all proud.



Jude van der Merwe



Image: *Make Your Mark* - Louise Snook's school holiday screen printing workshop

DIRECTOR'S REPORT

Each year when we review the achievements of the the Mundaring Arts Centre (MAC) it gives us a brief opportunity to reflect on *why* we do, what we do.

The Mundaring Arts Centre staff, Board, partners and volunteers all went above and beyond in 2016 to demonstrate what is possible when a community pulls together.

The Mundaring Arts Centre's strength has always been its appeal to people of all ages and abilities, providing a creative space that can challenge and provide a sense of belonging. It is *this* spirit of working together as a community collective to build friendships, skills, knowledge and cultural understanding that continues to attract people to *want* to be a part of this organisation.

There are many levels to the operation of the Mundaring Arts Centre and as Jude van der Merwe has mentioned, the measure of its value comes down to our core goals and what we collectively can offer with the support of our talented artists.

The Mundaring Arts Centre's 2015 – 2018 Strategic Plan has been designed to meet the growing needs of the eastern region population and it has continued to play a key role in guiding our expanding vision for supporting a connected community.

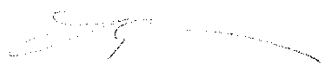
A number of pivotal initiatives greatly contributed to the realisation of these goals, supporting a new range of artists and audiences, expanding partnerships and encouraging people of all backgrounds to actively engage with high quality visual and community arts programming.

These initiatives are detailed briefly in the following report, demonstrating the breadth of programming and participation, but what it can't detail is the effect these programs have on the individuals involved.

Machines + Makers celebrated the exceptional craft skills of the past and reached out to engage people who may otherwise not see themselves as visitors to an art centre or historical organisation. The project greatly strengthened existing partnerships, attracted new ones and invited people from far and wide to revisit Mundaring. We are proud to announce this project will commence touring in 2017 with the support of ART ON THE MOVE, building on the success of the project and previous touring exhibitions to take Mundaring's programs to regional communities.

Working for the Mundaring Arts Centre, I have always felt there is a great feeling of support and affection for the Centre from the local community, gradually over the years this appreciation has spread to attract artists, visitors and organisations from further afield. This growing patronage can only strengthen our services to the community and its artists.

MAC contributes to the cultural life of our region by nurturing creative potential, I would like to thank everyone who is a part of the Mundaring Arts Centre for continuing to foster MAC's potential.



Jenny Haynes

TREASURER'S REPORT

Throughout 2016, the Mundaring Arts Centre's Finance Committee and Board implemented strategies to strengthen services and stabilise funding streams. MAC carefully appraised opportunities to increase the synergy between key programs to encourage new partnerships and attract a variety of additional short and long term funding options. A number of approaches successfully reduced the impact of the changing nature of funding support from the Department of Culture and the Arts (DCA) (quick response, small project grants, rather than annual funding) resulting in a surplus of \$25,919 for the financial year.

This result was achieved by:

1. Reducing staff hours, relying more heavily on volunteer support
2. Removing subsidized grant support for exhibitions - artists encouraged to apply directly to DCA rather than MAC providing this service
3. Diversifying grant applications to support key services, rather than additional programs
4. Establishing new partnerships with sponsors
5. Working closely with the Shire of Mundaring to improve facilities and services
6. Strengthening partnerships with the City of Swan; consultancy and visual arts programming
7. Increasing partnerships with local community groups, new artists and audiences
8. Implementing new marketing strategies, online and printed media to attract visitation

This has resulted in:

- A high level of exhibition sales
- New sponsors; community partners and audiences
- Strengthened relationships with previous partners
- Building improvements to the Mundaring Arts Centre
- Additional project funding from:-
 - Community Arts Network WA – *Machines + Makers project*
 - Department of Infrastructure & Regional Development – *Building Improvements*
 - Healthway Drug Aware – *Act-Belong-Commit Make Your Mark program*
 - Local Drug Action Group - *WOWA*
 - Mundaring Community Financial Services – *WOWA, Environmental Art Project + HeARTlines*
 - National Disability Insurance Scheme – *Fusion program*
 - National Disability Services – *Fusion program*

Our financial goal for 2016 was to achieve a small reserve to ensure a stronger financial position and re-establish adequate staffing levels for services offered. A summary of MAC's accounts are provided in the following pages, together with the Auditor's Report from Walker Wayland Audit (WA) Pty. Ltd. (previously Hall Chadwick Audit WA).

Debbie Millard

Mundaring Arts Centre Inc

Full audit report and financial statements available upon request

Income & Expenditure Statement 2016

INCOME	2016	2015	variation
Operational Funding - Shire of Mundaring	\$152,104	\$75,487	*
Project & Grant Funding	\$212,229	\$261,165	-19%
Sales & Service	\$317,054	\$206,520	54%
Administration	\$21,353	\$8,555	150%
TOTAL INCOME	\$702,740	\$551,727	27%

EXPENDITURE			variation
Payments to Artists	\$223,341	\$182,569	22%
Exhibition & Project Expenses	\$46,412	\$135,021	-66%
Consultants Fees	\$56,592	\$0	-
Building Improvements	\$16,982	\$0	-
Administration Expenses	\$333,494	\$323,636	3%
TOTAL EXPENDITURE	\$676,821	\$641,226	6%

NET SURPLUS / DEFICIT	\$25,919	-\$89,499	*
------------------------------	-----------------	------------------	----------

* Anomaly of figures due to change in financial year reporting in 2015 from Jul-Jun to Jan-Dec

Statement of Assets & Liabilities

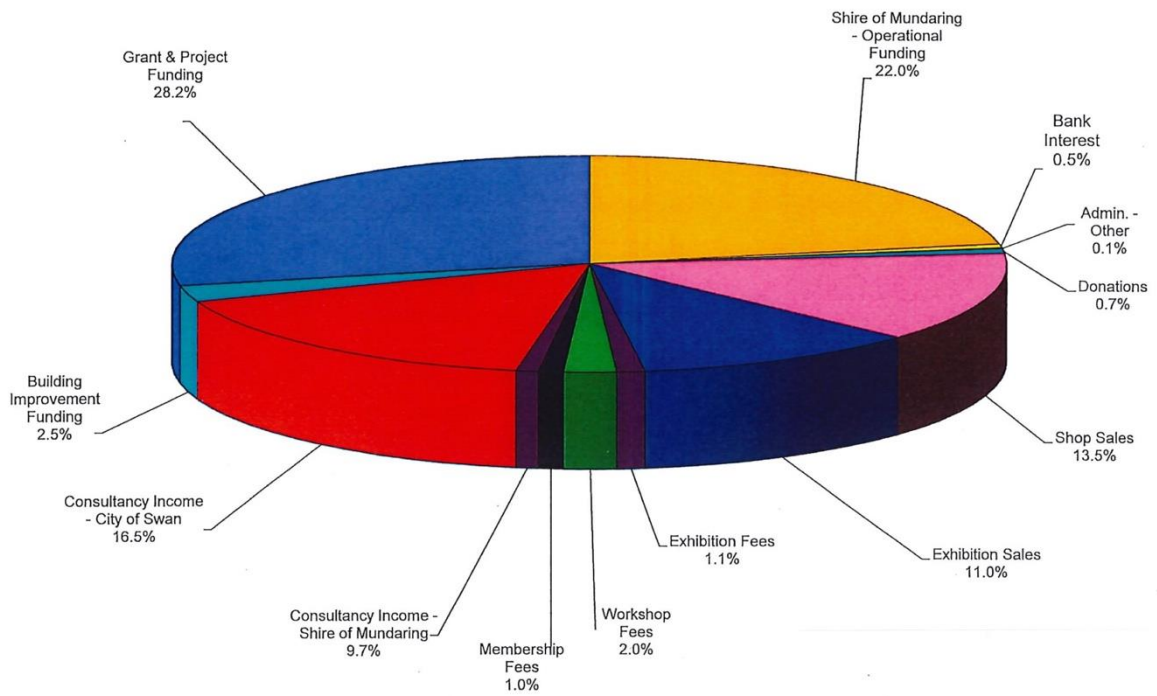
ASSETS	31 Dec 2016	31 Dec 2015	variation
Cash & Cash Equivalents	\$269,627	\$265,503	2%
Accounts Receivable	\$48,451	\$21,211	128%
Pre-paid Insurances	\$3,968	\$4,194	-5%
Stock on Hand	\$1,972	\$2,863	-31%
Furniture & Equipment	\$6,833	\$7,493	-9%
TOTAL ASSETS	\$330,851	\$301,264	10%

LIABILITIES			
Accounts Payable & Accrued Expenses	\$50,430	\$44,530	13%
Payments Received In Advance	\$1,000	\$0	-
Gift Vouchers to be redeemed	\$720	\$1,380	-48%
Provision for Payroll Expenses	\$71,904	\$63,622	13%
Project Grant Funding Received in Advance	\$145,059	\$169,153	-14%
Public Fund Donations held in trust	\$21,901	\$8,661	153%
TOTAL LIABILITIES	\$291,014	\$287,346	1%

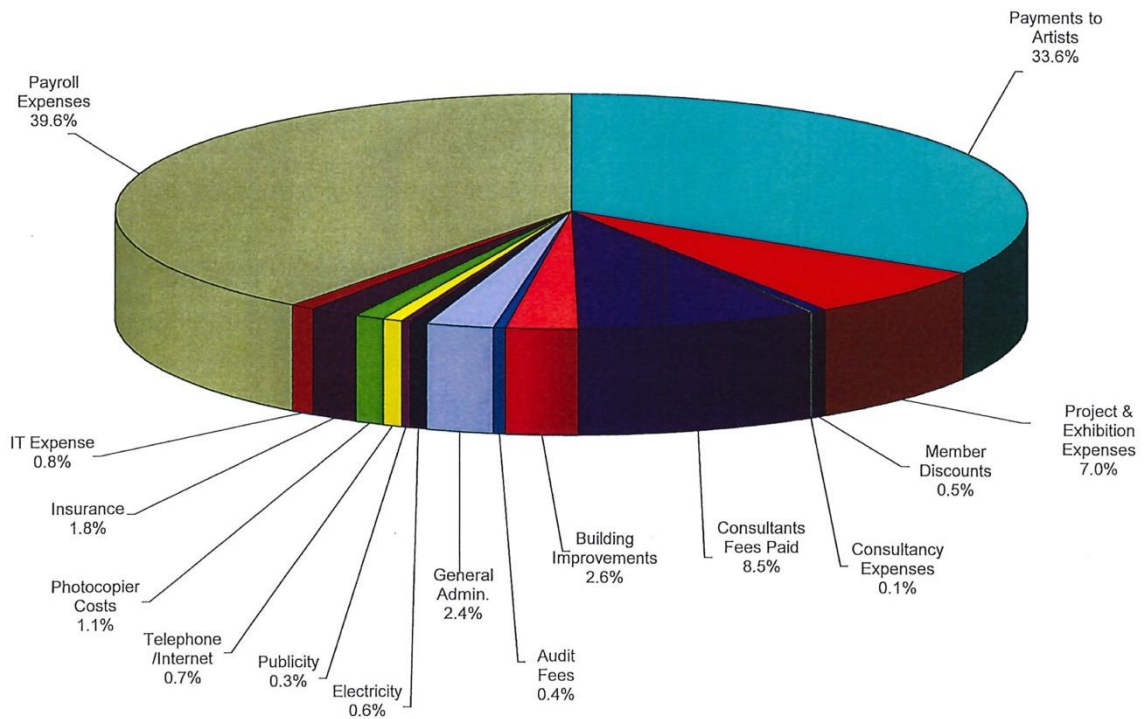
NET ASSETS	\$39,837	\$13,918	186%
-------------------	-----------------	-----------------	-------------

EQUITY	31 Dec 2016	31 Dec 2015	variation
Retained Earnings / Capital Reserve	\$13,918	\$103,416	
Net Operating Surplus / (Deficit)	\$25,919	-\$89,499	
TOTAL EQUITY	\$39,837	\$13,918	186%

MUNDARING ARTS CENTRE INC. - Income 2016



MUNDARING ARTS CENTRE INC. - Expenditure 2016





**INDEPENDENT AUDITOR'S REPORT
TO THE MEMBERS OF MUNDARING ARTS CENTRE INC
FOR THE YEAR ENDED 31 DECEMBER 2016**

We have audited the accompanying financial report of Mundaring Arts Centre Inc (the association), which comprises the statement of financial position as at 31 December 2016, the statement of profit or loss and other comprehensive income, the statement of changes in equity and statement of cash flows for the year then ended, notes comprising a summary of significant accounting policies and other explanatory information, and the certification by directors of the board on the annual statements giving a true and fair view of the financial position of the association.

Directors's Responsibility for the Financial Report

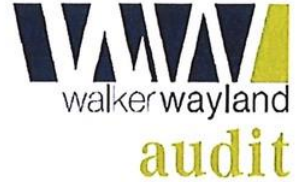
The directors of the association are responsible for the preparation of the financial report that gives a true and fair view in accordance with Australian Accounting Standards – Reduced Disclosure Requirements, the Associations Incorporation Act 2015 (WA) and the Australian Charities and Not-for-profits Commission Act 2012, and for such internal control as the committee determines is necessary to enable the preparation of the financial report that is free from material misstatement, whether due to fraud or error.

Auditor's Responsibility

Our responsibility is to express an opinion on the financial report based on our audit. We conducted our audit in accordance with Australian Auditing Standards. Those standards require that we comply with relevant ethical requirements relating to audit engagements and plan and perform the audit to obtain reasonable assurance whether the financial report is free from material misstatement.

An audit involves performing procedures to obtain audit evidence about the amounts and disclosures in the financial report. The procedures selected depend on the auditor's judgement, including the assessment of the risks of material misstatement of the financial report, whether due to fraud or error. In making those risk assessments, the auditor considers internal control relevant to the entity's preparation and fair presentation of the financial report in order to design audit procedures that are appropriate in the circumstances, but not for the purpose of expressing an opinion on the effectiveness of the entity's internal control. An audit also includes evaluating the appropriateness of accounting policies used and the reasonableness of accounting estimates made by management, as well as evaluating the overall presentation of the financial report.





**INDEPENDENT AUDITOR'S REPORT TO THE MEMBERS OF
TO THE MEMBERS OF MUNDARING ARTS CENTRE INC
FOR THE YEAR ENDED 31 DECEMBER 2016**

We believe that the audit evidence we have obtained is sufficient and appropriate to provide a basis for our audit opinion.

Opinion

In our opinion, the financial report of Mundaring Arts Centre Inc is in accordance with the Associations Incorporation Act 2015 (WA) and Associations Incorporation Regulations 2016 (WA), including:

- (i) giving a true and fair view of the association's financial position as at 31 December 2016 and of its performance for the year ended on that date; and
- (ii) complying with Australian Accounting Standards - Reduced Disclosure Requirements.

Walker Wayland Audit (WA) Pty Ltd.

WALKER WAYLAND AUDIT (WA) PTY LTD

A handwritten signature in black ink, appearing to read 'John Dorazio', is written over a horizontal line.

JOHN DORAZIO FCA

Director

For and on behalf of
Walker Wayland Audit (WA) Pty Ltd
Chartered Accountants
Level 2, 129 Melville Parade
COMO WA 6152

Dated this 19th day of April 2017



EXHIBITION PROGRAM

From February to December 2016 the Mundaring Arts Centre (MAC) presented 15 exhibitions and an inclusive education program of workshops, artist talks, curatorial tours, community projects, residencies, educational displays and live performances.

The exhibition line-up included artist initiated group and solo shows, curated exhibitions and residencies. The exhibitions in Gallery 1 and 2 showcased a diverse range of approaches and art forms by Western Australian artists with Artist in Focus programs providing a flexible approach for emerging artists and allowing greater public interaction.

The exhibitions were offered free to the public and provided exposure for approximately 400 artists and 480 primary school students. The exhibitions generated around \$55,000 in sales and attracted over 10,000 visitors.

11 NOVEMBER – 21 DECEMBER 2016

GALLERY 1



TIED UP WITH STRING

MAC celebrated the festive season with an abundance of contemporary craft, created by 50 exceptional West Australian artists, secreted into 50 identical wooden boxes. This covert exhibition invited buyers to purchase an artwork, sight unseen, to be revealed at the *Opening of the Boxes* on 11 November 2016. The unveiling of the 50 covetable works of art became an evening of performance art and celebration as the buyers discovered the skill and imagination of the participating artists.

PARTICIPATING 'BLIND BOX' ARTISTS

Amanda Alderson	Stuart Elliott	Coral Lowry	Nick Statham
Hans Arkeveld	Eva Fernandez	Caroline Lyttle	Catherine Swioklo
Christine Atkins	Judith Forrest	Gayle Mason	Alastair Taylor
Denise Brown	Marie Haass	Angela McHarrie	Sarah Thornton-Smith
Paul Caporn	Fiona Harman	Lia McKnight	Sarah Toohey
Mikaela Castledine	Jenny Haynes	Antony Muia	Linda van der Merwe
Steve Castledine	Bevan Honey	Alan Muller	Susie Vickery
Olga Cironis	Joan Johnson	Tee Ken Ng	Katrina Virgona
Helen Clarke	Jessica Jubb	Sandie Schroder	Karin Wallace
Kelly Comber	Bernard Kerr	Nien Schwarz	Vanessa Wallace
Moira Court	Mich Lee	Nalda Searles	Anne Williams
Peter Dailey	Bethamy Linton	David Small	
Caitlin Dominey	Andre Lipscombe	Sue Starcken	

11 NOVEMBER – 21 DECEMBER 2016

GALLERY 2



GIFTED ARTISTS IN FOCUS

Anna Hadwin, Annemieke Mulders, Amanda Alderson, Holly and Jill O'Meehan, Denise and Patrick Brown

Seven West Australian artists, selected for their three dimensional craft skills, created ceramic, textile, jewellery and sculptural installations whilst in residence, sharing their “gifts” through display and workshops.

Nov / Dec Exhibiting Artists: 57; Total visitors: 1,355

30 SEPTEMBER – 6 NOVEMBER 2016

GALLERY 1



FIRE WORKS

Sandie Schroder and Nick Statham

Responding to the bushland environment and the ever present threat of bushfire, Schroder created works by burning cotton paper and wood panels to express vulnerability and beauty. Statham provided us with an opportunity to reflect on the depth of human experience after a bushfire with a considered balance of natural and man-made geometric sculptural forms.

30 SEPTEMBER – 6 NOVEMBER 2016

GALLERY 2



RETURNING TO THE GARDEN ARTIST IN FOCUS

Caroline Lyttle

Lyttle reflected personal and universal life experiences through the lens of the garden. Her work inspired reflection on the cyclical character of nature, life force and regeneration with a range of subtle and strong mixed media and painted works.

Sept / Oct / Nov Exhibiting Artists: 3; Total visitors: 1,120

19 AUGUST – 25 SEPTEMBER 2016

GALLERY 1



LEFT TO MY OWN DEVICES

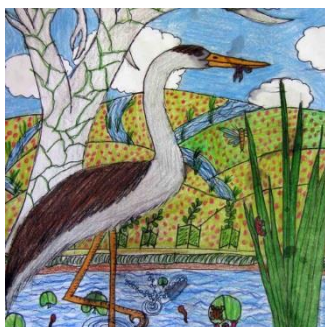
Sarah Thornton-Smith

For her first solo show, Thornton-Smith explored ideas of landscape and the relationship that develops between colour, form, structure and light. Designed as a playful conversation in colour, the delicate pieces were meticulously constructed out of paper, soft woods and metal foils rendered in gouache.

Partners / Sponsors – Studio 281, JP Hogan Cabinet Makers, B+S Printers

19 AUGUST – 25 SEPTEMBER 2016

GALLERY 2



MUNDARING ENVIRONMENTAL ART PROJECT 2016

Hundreds of primary school children from across the eastern region immersed themselves in a world of environmental discovery and problem-solving to come up with designs for the 2016 Mundaring Environmental Art Banners to be displayed in the town centre.

Sponsors – Act-Belong-Commit Healthway, Shire of Mundaring, City of Swan, Mundaring Community Bank Branch of Bendigo Bank.

Aug / Sept Exhibiting Artists: 454; Total visitors: 994

29 JULY – 14 AUGUST 2016

THE GALLERY ELLENBROOK



MAKE YOUR MARK

Curated by Catherine Czerw

Celebrating the diverse art forms created during the *Make Your Mark* workshops held since Oct 2015, *The Gallery*, Ellenbrook came alive with the creative artwork of hundreds of people aged 5 to 75 years who took part in this visual arts series.

Partners / Sponsors – Act-Belong-Commit Healthway, City of Swan, Shire of Mundaring, Mundaring Community Bank Branch of Bendigo Bank, Ellenbrook Arts

***Make Your Mark* exhibiting Artists: 120; Total visitors: 328**

8 JULY – 14 AUGUST 2016

GALLERY 1



MACHINES + MAKERS

Curated by Jude van der Merwe

Angela McHarrie, Coral Lowry, Eva Fernandez, Geoffrey Drake Brockman, Judith Forrest, Linda van der Merwe, Mikaela Castledine, Nalda Searles, Paul Caporn, Stuart Elliott, Susie Vickery and Tee Ken Ng

Mundaring celebrated the regions sewing history with leading contemporary artists responding to the political, social and economic impacts of the invention and use of the domestic sewing machine (1850's -1980's). The exhibition featured selected historic sewing machines from the Collection of Charles Lithgow and a documentary about Charles and his collection, the stimulus for the broader *Machines + Makers* project.

GALLERY 2



A NEEDLE PULLING THREAD

Curated by Sarah Toohey

With a cornucopia of stitched objects assembled in a shrine to the sewing machine, *A Needle Pulling Thread* was an exhibition of works created by community groups, high school and primary school students. The assembled art forms told stories of personal connections to the sewing machine and local history through stitch, fabric and embellishment.

Additional *Machines + Makers* exhibitions were held at:

St John of God Hospital Midland - showcasing a working treadle machine and a series of paintings by Judith Forrest, encouraging visitors to head up the hill to discover more wonderful sewing creations.

Mundaring Albert Facey Library - '*Story Line*' activity inviting people to contribute their sewing stories.

Greenmount Katharine Susannah Prichard Library - displays of sewing books with project material.

Midland Library – '*Dressing Midlanders*' a display of historical documents relating to the now closed Midland Shirt Factory.

Machines and Makers Open Day – Mundaring Camera Club member's photographic display.

Partners / Sponsors – Community Arts Network WA; Jo and Charles Lithgow; Gordon Freegard; Shire of Mundaring; St John of God Midland Private Hospital; City of Swan; Non Drowsy Designs; Mundaring Camera Club; Curtin University; Mundaring & Hills Historical Society; Lion Mills Vineyards; Brook Wines; Artsource; Helena College; Eastern Hills Senior High School; Mount Helena Primary; Jo Heuvick; Violet Turner; Hilda Christensen and Heli Donaldson.

***Machines + Makers* exhibiting Artists: 121; Total visitors: 2,857**

27 MAY – 26 JUNE 2016

GALLERY 1



FUSION

The exhibition celebrated the *FUSION Art Project*, a series of 'whole of community' workshops for all abilities. Over nine months participants created new works in experimental drawing, paper making, sculpture, printmaking, felt making, street art and painting workshops held by local artists.

Partners / Sponsors – Act-Belong-Commit, National Disability Services WA (Community Living and Participation), Shire of Mundaring, City of Swan, Fusion Steering Committee, DADAA WA, RISE Network, Crosslinks and Inclusion WA.

GALLERY 2



ARTIST IN FOCUS

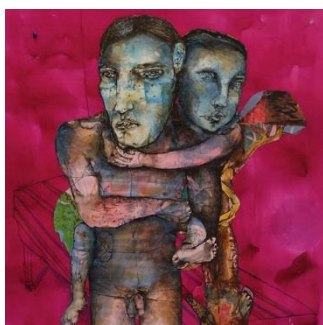
Aliesha Mafrici

Nominated by ECU lecturers as a student with exceptional potential, Mafrici explored the limitations of our ability to interpret the world through mixed media, print and sculpture. Whilst in residence, Aliesha explored copper etching, ink drawings and plaster relief to create artist books and studies on paper.

May / Jun Exhibiting Artists: 75; Total visitors: 856

22 APRIL – 22 MAY 2016

GALLERY 1 & 2



STEPPING STONES

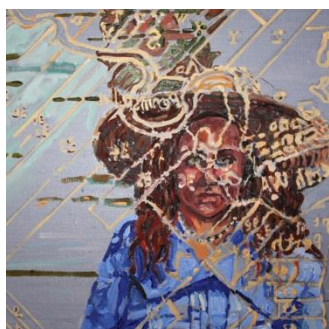
Antony Muia

Stepping Stones explored the power art has to expand and liberate us. Spilling into sculpture, audio and installation, the exhibition saw exposure to art as a form of self-help culture, utilising the gallery as a place of relaxation and contemplation. Through his multi-media work and ancient yogic meditation, Muia encouraged us to slow down, be mindful and engage with art.

Artists: 1; Total visitors: 783

18 MARCH – 17 APRIL 2016

GALLERY 1



MIGRATION AND SETTLEMENT

Curated by Sue Starcken

Karin Wallace, Catherine Swioklo, Olga Cironis, Hans Arkeveld, Linda van der Merwe, Thomas Hoareau, Tracey Hart, Anthony Muia, Silvana Ferrario, Helen Seiver, Joan Johnson, Norma MacDonald, Madeleine Clear, Una Bell, Gregor Hart, Caroline Lyttle, Kieran Ingram, Alan Muller

Presented as the Shire of Mundaring Open Art Acquisition, artists responded to the Shire's Indigenous and multicultural heritage and the communities that evolved across the vast areas of the region.

GALLERY 2



THROUGH THE SINGING OF MY HANDS

ARTIST IN FOCUS

Anne Williams

Renowned for her mastery of natural dyeing and a wide range of 2D and 3D textile and fibre techniques, Williams utilised recycled materials to express her passion for art as a way to engage with the thoughts behind everyday experience.

Mar / Apr Exhibiting Artists: 19; Total visitors: 913

13 FEBRUARY – 13 MARCH 2016

GALLERY 1



RILLAWOOD

Trudy Smith

Celebrating her 100th birthday and a lifetime of creative endeavour, Smith shared her observations of nature through gentle brushstrokes and expressive planes of colour. A self-taught artist, Smith's paintings were mostly imaginary landscapes, some of typical Australian scenes, some semi-abstracts.

GALLERY 2



ARTIST IN FOCUS

Helen Clarke

Clarke's 30 year printmaking career earned her an envied reputation for exceptionally realistic and multilayered print forms. Working in the mediums of linocut, etching, drawing and mixed media, Clarke explores the forms, textures, colours and shapes of Australian plants and how they interact within the environment and expand her interest in history and place.

Feb / Mar Exhibiting Artists: 2; Total visitors: 792

PUBLIC PROGRAM

The Public Program featured artists' talks, exhibition tours, workshops, residencies, forums, professional development training, recreational events, festivals and performances. It was conceived and delivered by talented West Australian artists and included:

- a broad range of sessions to appeal to all ages and levels of ability
- community engagement opportunities
- after school and school holiday classes for young people
- Indigenous arts development programs and extension courses for practitioners

Exhibiting artists were engaged to conduct all-ages and specific target-age workshops to complement the themes and mediums displayed at the Mundaring Arts Centre. Senior artists from the Swan Valley hosted workshops from their studios and MAC coordinated a broad range of sessions across the eastern region. These were widely promoted to the public and specifically to all schools in the region.

ACT-BELONG-COMMIT MAKE YOUR MARK PROJECT

This project actively engaged thousands of people in creative activity. Young people aged between 5 and 24 years took part in workshops, projects, exhibitions, performances and displays exploring a range of processes and themes to encourage and celebrate a healthy, creative community.

Act-Belong-Commit Make Your Mark built upon the success of previous programming with workshops and events constructed to address local, social and environmental issues. The project delivered arts skills, contributing to increased self-esteem, health and well-being.

Act-Belong-Commit Make Your Mark brought together a number of sub-projects:

An Indigenous Education Program; *Worn Out Worn Art*; *The Environmental Art Project*; Visual Arts Workshops for young people and people with disability and presented them to new audiences.

INDIGENOUS ARTS ENGAGEMENT



Indigenous Cultural Coordinator, Robyn Templeton and Yamatji artist, Norma MacDonald invited young people, parents and community members to celebrate Indigenous culture through learning programs that generated new skills, revisited 'lost' skills, fostered pride and connections. Young Aboriginal students (pre-primary to year 5) from Middle Swan, Moordij Noongar College, Arbor Grove and Midvale Primary schools took part in Indigenous culture sessions, drawing, natural dyeing and textile workshops to create individual and group artworks for the exhibition held at *The Gallery*, Ellenbrook. Louise Snook ran in-school workshops at Malvern Springs and Ellen Stirling Primary to create felted self-portraits looking at identity, whilst students from Moorditj Noongar College created prints based on their relationship with nature.

Sessions 26; Participants 559; Schools 6; Audience ~328

WORN OUT WORN ART



Worn Out Worn Art (WOWA) engaged young people in workshops to create individual sculptural costumes from recycled materials. The workshops were themed to allow reflection and discussion of topics such as peer group pressure, healthy eating and lifestyles, the effects of drug use, environmental and social issues relevant to the age group.

Many of the student's works were showcased in a live performance at the Parmelia Hilton for the Local Drug Action Group's State Conference where *Worn Out Worn Art* was awarded the *Most Innovative Project Award – Metro* in the Local

Drug Action Group's Community Action and Advocacy Awards. Midland Gate Shopping Centre also proudly showcased the students 'Mad Hats' and character costumes with six static displays throughout the shopping centre to launch the *Alice Through the Looking Glass* movie at Ace Cinemas.

The *Act-Belong-Commit Worn Out Worn Art* Parade at the Darlington Arts Festival showcased more than 80 primary and high school student's wearable art from the eastern region. A team of makeup artists, hair stylists and community volunteers prepared the 86 participants and who performed live to an audience of approximately 360, alongside local musician Annika Moses.

The *Worn Out Worn Art* Parade, Parmelia Hilton performance and Midland Gate displays were the culmination of workshops facilitated by MAC with local artists Nerida Groom, Sarah Toohey, Lucinda Crimson, Mary Louise Carbone, Marie Jacquier and Sarah Bretherton. Students from Helena College, Kalamunda Senior High, Malvern Springs, Darlington and Ellen Stirling Primary schools let their imaginations run wild, creating a stunning array of costumes from recycled materials including 100s of ring pulls, cricket pads, computer components, newspaper, bubblewrap, reticulation pipe, CDs, fly screen and water bottles. Many individual entrants took part in school holiday workshops at The Gallery, Ellenbrook and the Midland Junction Arts Centre, some created their costumes independently and others, like the Mundaring Girl Guides, took part in community workshops.

Partners / Sponsors: Act-Belong-Commit Healthway; Local Drug Action Group, Shire of Mundaring, City of Swan, Mundaring Community Bank Branch, Bendigo Bank, Darlington Arts Festival, Midland Gate, Vicinity Shopping Centres, local schools, Ellenbrook Arts, Richard and Lyn Woldendorp.

Sessions 33; Participants 573; 5 Schools; 5 Display Venues; Audience ~4,540



MUNDARING ENVIRONMENTAL ART PROJECT



The annual environmental art project provides an opportunity for primary school children to engage with local and global environmental issues and promote a positive message about the importance of protecting the earth.

Primary school students investigated this year's theme, *Conserving our Waterways*, researching local aquatic life including plants, frogs, fish, reptiles, insects, birds and animals and how they exist together. They considered what we can do to protect and improve the waterway's health. Upper primary students selected a creek, river or lake and investigated the threats including pollution and introduced plants and animals.

In 2016, 454 students from 11 primary schools participated. Students from Chidlow, Gidgegannup, Middle Swan, Mundaring, Sawyers Valley, Mount Helena, St Anthony's Greenmount, Treetops Montessori, Pickering Brook, Helena College and Wooroloo primary schools displayed their artistic interpretations of ways to care for our waterways in an exhibition at the Mundaring Arts Centre 19 August – 25 September 2016.

16 artworks were selected to be reproduced as banners, translated into bookmarks and huge decals for the Midland Gate Shopping Centre escalators. The selected students hand-painted their banners with assistance from artist Louise Cook. The banners were then photographed to enable their reproduction. The Shire of Mundaring banners were launched to an appreciative crowd in the Nichol Street Rose Gardens on 10 November and the City of Swan banners were printed in December to be installed in February 2017.

Partners / Sponsors: Shire of Mundaring's Environmental Advisory Committee; Act-Belong-Commit Healthway, City of Swan, local schools, the Mundaring Community Bank Branch, Bendigo Bank.

Participants 454 primary school students; 11 Schools – 9 Metro / 3 Rural; Audience ~4,000

VISUAL ARTS WORKSHOPS

A year-long series of visual art workshops for young people and their families were held in community centres afterschool, in-school and in the school holidays. Some of the creative outcomes were publicly displayed alongside interactive art activities at public events such as Trek the Trail and the Avon Descent.

The visual arts programs engaged a broad range of previous MAC participants and new participants in the communities of Mundaring, Midland and Ellenbrook. The workshop programs introduced a variety of art mediums (painting, animation, paper-making, storytelling, jewellery, felt-making, drawing, natural dyeing, print-making, sculpture and textiles) as well as encouraging individual and group learning. For the youngest age group, parents also attended, enabling new socialisation opportunities for young families.

The animation workshops produced some fantastic short films, viewed by family members 'on the big screen' after each session. The animations were awarded the Eastern Metropolitan Regional Council's *Digital Arts Award for Innovation in Technology* and publicly displayed at the *Act-Belong-Commit Make Your Mark* exhibition in Ellenbrook and on the MAC website.

AVON DESCENT - August

MAC artists and volunteers invited participants of all ages to take part in the Activity Tent at the Avon Descent Festival, Guildford on Sunday 7 August. Whilst the boats passed by, Heather Davis assisted ~370 participants to create their own flat food out of felted wool and Maki Curtis helped visitors to create special badges depicting what they like to do in the great outdoors.

TREK THE TRAIL - Sept

Hundreds of walkers took to the trail for the event on Sunday 25 September with ~200 people taking part in the free interactive art activities. Trek the Trail had something for everyone, physical activity, the arts, history and the natural environment, with trekkers enjoying the scenery from the John Forrest National Park entry to Swan View Station.

At two sites, the National Park Falls and the Swan View Station, MAC offered a natural weaving activity with artists Anne Williams and Marie Jacquier; natural dyeing with puff balls to create hand-dyed scarves with artists Heather Davis, Maki Curtis and Mary Anne Dawson and Trekkers learnt the art of textile binding to create their own trail guardian and large-scale woven nest installation. The nest became a natural 'selfie station' with hundreds of children and 'kids at heart' jumping in to add to the creation and have their picture taken.

In the lead up to the event, local artists Anne Williams and Sarah Toohey worked with students from Mundaring Christian College to create natural sculptures. Mundaring Christian College students collected natural foliage and bound it together to create a birds and creatures installed as 'Trail Guardians' at the National Park Falls site overseeing the interactive art activities.

ROTARY CHRISTMAS TREE PROJECT - December

MAC invited 150 Glen Forrest Primary School students to work with artist Sarah Thornton-Smith to create hundreds of leaves for the Mundaring Shire's Rotary Christmas Tree, installed on Great Eastern Highway outside the Mundaring Shire's Administration Offices. Inspired by Sarah's interest in colour and design, the students explored the 'Colours of Christmas' and painted baubles and Christmas designs on the canvas 'leaves' for the tree.

Youth Visual Art Sessions 73; Participants 1,573; Audience ~2,500

Following the success of the *Make Your Mark* Project, in September 2016 MAC responded to the City of Swan's Expression of Interest MB092016 for the management and lease of the Midland Junction Arts Centre.

In 2017 the Mundaring Arts Centre will begin management of the Midland Junction Arts Centre presenting great potential to expand MAC's membership and participant base, create new partnerships and provide a dedicated workshop and performance space. MAC proposes to build on the successes of previous programming to deliver a diverse arts education and cultural program with regular visual, performing and community arts activities for the eastern region, establishing the Midland Junction Arts Centre as a second vibrant community arts facility.

ARTS DEVELOPMENT FOR PEOPLE WITH DISABILITY

MAC worked with the Shire of Mundaring, City of Swan, National Disability Insurance Agency (NDIA) and DADAA to deliver collaborative, accessible programming designed to increase social inclusion in a 'whole-of-community' setting. These accessible FUSION art workshops, exhibition tours, displays, recreation activities and community events enabled independent learning and skills development.

Disability awareness and engagement training for staff, artists, arts workers, carers and project partners provided additional networking opportunities and created a team able to provide inspirational and educational inclusive arts activities in the region.

FUSION ART PROJECT



FUSION continued to engage people with disability to take part in creative activities within their local community. Exhibition tours at MAC were a highlight of the project, allowing participants to attend short workshops by exhibiting artists, meet new people and discover new interests and art skills.

Regular workshops by local artists were run over 4 or 6 weeks in a range of visual art mediums, including experimental drawing, paper making, sculpture, fibre and textiles, printmaking, felt making, street art and painting. To enable inclusion, each workshop was facilitated by two professional artists for small groups of up to 12 people.

Workshops were free for people with disability, and support workers participated as students to develop their own artistic skills.

31 Accessible workshops; 9 Professional Development workshops; 780 Participants; 631 Audience

ADULT ARTS DEVELOPMENT



The program of workshops for adults invited the public into private studios throughout the Swan Valley, as well as offering workshops in many mediums (ceramics, oil, acrylic and watercolour painting, jewellery, printmaking, natural dyeing, weaving, crochet, sewing, electronic media and drawing) with renowned local artists at MAC and Midland Junction Arts Centre. Professional development forums were held in Midland, Gomboc Gallery and Ellenbrook. Artists in residence shared their skills and stories during meet the artist sessions and a number of exhibition tours, talks, volunteer events, soirees and community meetings brought together artists to form new collaborations and nurture their arts practice.

65 Workshops; 869 Participants; 618 Audience

MACHINES + MAKERS

In 2016 a new project was developed to engage cultural groups; promote the region's artists; and celebrate our cultural assets. From June to September 2016 a large community steering committee and volunteers worked together to present the *Machines + Makers* project, inviting the community to celebrate and explore the exceptional craft skills of the past with exhibitions, community projects, historical displays, artist's talks and public events centred around collections of sewing machines from the 1850's-1950's.

The town of Mundaring and additional venues across the Shire of Mundaring and City of Swan, came alive with a revived passion for sewing, machines and our sewing heritage.

With the support of CAN, a series of 17 community sewing workshops, led by textile artists Sarah Toohey and Marie Jacquier, were held between April and August 2016 to create artworks for the *A Needle Pulling Thread* exhibition on show 8 July to 14 August 2016. In this community exhibition at MAC, stitched objects were assembled in a shrine to the sewing machine. The small, personalized needle cases, pincushions, self-portraits, birds and dolls (created by high school and primary school students, individuals, sewing and community groups) told stories of personal connections to the sewing machine and local history through stitch, fabric and embellishment.

A Needle Pulling Thread celebrated the invention of the remarkable sewing machine, with a number of antique treadle and hand-crank machines (1862-1894) on display, on loan from local collector Charles Lithgow. A documentary about Charles and his collection was filmed to promote the project and record this substantial Collection and oral history.

A Needle Pulling Thread transformed Gallery 2 at the Mundaring Arts Centre into a working room where many visitors and groups of all ages and abilities tried their hand at sewing (often for the first time) and immersed themselves in sewing paraphernalia, paper patterns, bobbins, fabric and threads. Each Thursday during the exhibition period, Sarah Toohey and Marie Jacquier demonstrated and assisted participants to create new works using these antique machines and embellishing their pieces with hand-stitching as part of the '*Scrapula Drop-In Workshops*.'

In Gallery 1 of MAC the *Machines + Makers* exhibition curated by Jude van der Merwe, complemented the community display. Leading contemporary artists responded to the political, social and economic impacts of the invention and use of the domestic sewing machine (1850's - 1980's), as well as selected historic sewing machines from the Collection of Charles Lithgow. Featuring works by Angela McHarrie, Coral Lowry, Eva Fernandez, Geoffrey Drake Brockman, Judith Forrest, Linda van der Merwe, Mikaela Castledine, Nalda Searles, Paul Caporn, Stuart Elliott, Susie Vickery and Tee Ken Ng, the two exhibitions were opened by fashion designer and artist Megan Salmon.

For the project, the Mundaring and Hills Historical Society collected community stories and objects to create *A Stitch in Time*, a historical exhibition at the Mundaring and Hills Museum on show from 9 July to 29 November. The exhibition showcased a large array of objects, tools, garments, patterns and local stories relating to sewing heritage.

A preview installation was also displayed at St John of God Midland Public and Private Hospitals showcasing a working treadle machine and a series of paintings by Judith Forrest, encouraging visitors to head up the hill to discover more wonderful sewing creations.

The *Machines + Makers* Community Open Day held on Sunday 17 July at Mundaring Hall was coordinated by Heli Donaldson and Jude van der Merwe working closely with people from the Historical Society, Mundaring Sharing, the Mundaring Arts Centre, The Embroiderers Guild of WA, the Mundaring Camera Club, the CWA, Save the Children, Anglicare Op Shop, Hills Choir and local collectors. The Open Day attracted thousands of sewing enthusiasts with Collectors Gordon Freegard and Charles Lithgow showing samples from their respective collections and on hand to discuss machines with other enthusiasts. Visitors learnt how to cut a pattern; use a dress makers mannequin; try a treadle machine; share their thoughts and stories via the Mundaring Library's 'Story Line' project; have a go at the 'Guess Wot Film' competition; enjoy the sounds of the Hills Choir as they sang sewing themed songs from the past; browse through vintage and collectable stalls; see quilts created by the Mundaring Sharing members and learn about the regions sewing history via the Mundaring and Hills Historical Society stall. The Embroiders Guild were on hand to provide expert advice for the 'Old Stuff Road Show' and talk to people about their significant garments for the Australian Dress Registry. The Mundaring Camera Club showcased the talents of their members via a photography exhibition, the CWA provided Devonshire teas and the Save the Children Fund provided soups while Siobhan Dick from Marloo Theatre got the crowd all steamed up in an ironing competition to be remembered for years to come.

City of Swan and Shire of Mundaring Libraries promoted the project to their visitors via displays of sewing books with promotional material, inviting people to contribute their sewing stories and take part in the activities. The Mundaring Library held a 'Story Line' activity and the City of Swan's Midland Library created a display of historical documents relating to the now closed Midland Shirt Factory.

Artist Talks and Workshops 9 July exhibiting artists, Suzie Vickey and Nalda Searles presented artist talks at MAC. Suzie described her first sewing encounter with her mother's Singer treadle in the South-West and her sewing adventures all over the world. Nalda then shared her "string theory" in an afternoon talk and string workshop.

Sunday 17 July Sarah Toohey and Marie Jacquier worked in residence at MAC inviting visitors to the *Needle Pulling Thread* exhibition to create their own work of art on the hand crank machines. On Thursday 21 July students from Eastern Hills Senior High visited the exhibitions on a school excursion and created small stitched birds in a workshop with Sarah Toohey and Marie Jacquier.

Throughout July to August adult community groups (Swan Mental Health, Swan Community Care, Umbrella Multicultural Group, NDIA, Donovan Village, Awesome Seniors) and Homeschoolers took part in exhibition tours and Scrapula workshops.

Saturday 20 August, textile artist Wendy Lugg presented a talk about the State Library of WA's Mapping Memory Project as part of the Mundaring and Hills Historical Society's public program.

To conclude the *Machines + Makers* project, on Sunday 14 August, MAC in partnership with the exhibiting artists Coral Lowry, Tee Ken Ng, Angela McHarrie, Geoffrey Drake-Brockman and Eva Fernandez and Artsource delivered a set of artist talks with a Q&A with curator Jude van der Merwe. The talks were followed by the launch of the 'Every Stitch of the Process' documentary created by Andrew Samson and Kudzanayi Tapera from Curtin University Screen Arts and a thank you afternoon tea for all of the volunteers, artists and groups who had contributed.

Machines and Makers Partners / Sponsors – Community Arts Network WA, Jo and Charles Lithgow, Gordon Freegard, Shire of Mundaring, St John of God Midland Private Hospital, City of Swan, Non Drowsy Designs, Mundaring Camera Club, Curtin University film students, Mundaring & Hills Historical Society, Country Women’s Association, Save the Children Hills Branch, Patches Forever, Mundaring Sharing, Marloo Theatre, Mundaring Choir, Australian Dress Register, The Embroiderers Guild, Lion Mills Vineyards, Brook Wines, Artsource, Marie Jacquier from Helena College; Karen James from Eastern Hills Senior High School; Liz Gilead and Kerry Gow from Mount Helena Primary; Jo Heuvick, Violet Turner, Hilda Christensen, Heli Donaldson.

**Participants: 45 Volunteers; 88 Scrapula workshops; 51 Storyline; 244 talks and workshops;
1,500 Visitors to Open Day; 109 Community members created A Needle Pulling Thread artworks;
12 Artists Machines + Makers exhibition Gallery 1;
Total Exhibition Visitors: 2,857
Thousands of people would have viewed the St John of God and Library displays**

CONSULTANCY

MAC manages the Shire of Mundaring Art Collection by rotating, maintaining and cataloguing artworks, utilising an online database as a management tool. MAC is engaged by the Shire of Mundaring (SOM) to provide direction for arts and cultural development, acting in an advisory and managerial capacity on committees, projects, advisory groups and in the development of policies.

The Mundaring Arts Centre plays an active role on the Shire of Mundaring’s Cultural Advisory and Mundaring Community Sculpture Park Committees. Currently MAC manages the sculptures in the Mundaring Community Sculpture Park and Shire Administration grounds, regularly assessing these works with an annual budget allocated for maintenance.

With support from Department of Environment, Lotterywest, the Water Corporation and the Shire of Mundaring, the Mundaring Community Sculpture Park revitalisation project was publicly launched by Premier Colin Barnett on 29 July 2016.

For this project MAC worked in partnership with the Shire of Mundaring to determine the design for the play equipment; the colour palette; the inclusion of art panels and an interactive sculptural play-form based on the theme, *Connection to Fauna*. Jenny Haynes oversaw the project, awarding artists Nic Compton and Emanuel Arkeveld the contracts to complete the Ornate Crevice Dragon installation. Philippa O’Brien, Madeleine Clear and Jenny Haynes collaborated to create the signage; art panels for the play equipment; soft fall design and fencing panel inserts.

MAC continues to strengthen its services, building on established connections, refining and broadening its programming. In 2016 MAC partnered with the City of Swan to assess new public art proposals and document and value the City’s Moveable Art Collection.

MAC was also engaged to consult on the Lloyd Street Underpass public art project- awarded to Bridget Norton, launched February 2016; the Bullsbrook Community Centre; Ellenbrook District Open Space; Midland Youth Hub and Waterhall Park public art projects. This public work signifies an exciting opportunity for new collaborations and iconic celebrations of the region’s cultural heritage.

SHOP AND STATISTICS

The Shop showcases the exceptional talent of Perth’s artists, attracting visitors and buyers not only from the local community, but also from interstate and overseas. The shop is open free to the public six days a week and manned during the week by an exceptional team of volunteers.

Showcasing an excellent range of high quality contemporary art and craft, MAC attracted around 10,200 visitors to Mundaring, providing a popular tourist destination in the Mundaring town-site.

In the last financial year approximately 150 WA artists were represented in the Shop with ~75% from the outer metropolitan area. The shop is a significant outlet for artists, providing them with the opportunity to sell and display their work, generating \$62,634 of income from shop sales and \$55,219 from exhibition sales. MAC continues to promote the rich natural heritage, cultural life and artistic traditions of the Shire of Mundaring, providing a sense of connection between people, stimulating creativity and contributing to the local economy via its arts programs.

In 2016, with the support of the Shire of Mundaring and the Department of Infrastructure and Regional Development’s Stronger Communities Program, MAC revitalised the exterior of the Arts Centre. Sarah Thornton Smith was selected as the artist to oversee the project, selecting the colour scheme and creating a new public art celebrating the connections between the Mundaring Arts Centre, the environment and its people. The façade was repainted and new gutters and downpipes fitted to ensure a welcoming and professional space for exhibitors and visitors.



Image: Greg Crowe ceramic beakers, bowls and plate; Narayani Palmer ceramic vases; Bernard Kerr ceramic vase; Ella & Lily hand-printed purses; Amanda Harris ceramic vessels; Anthea Carboni ceramic plates, bowls and cheese plates; Emma Vinkovic ceramic beakers and Sue Codee trivets.

Statistics	
Exhibition Visitation	9,670 Mundaring Arts Centre exhibition visitors 328 <i>Make Your Mark – The Gallery, Ellenbrook</i>
Shop Visitation between Exhibitions	512
Exhibiting Artists	400+
Public Program Participants	6,333
Public Program Artists	60
Public Program Audience	Approximately 20,000
Members	298 Financial Members; 13 Patrons; 38 Life Members

SUMMARY

The Mundaring Arts Centre is governed by a voluntary Board of business and community members, with services delivered by dedicated staff, an extensive active team of highly valued volunteers and community partners. The Mundaring Arts Centre's core activities, as outlined, benefit the economic and tourism development of the region as well as providing exposure and employment for local artists and inclusive activities for the community.

Throughout 2016 MAC has continued to reach out to our community and to involve a broad range of people from the rich diversity of interest groups.

THANK YOU

MAC whole-heartedly thanks and formally recognises the following wonderful people without whom the program of events would not have been possible.

PROJECT PARTNERS Shire of Mundaring; Healthway Act-Belong-Commit; City of Swan; Mundaring Community Bank Branch, Bendigo Bank; Community Arts Network WA; National Disability Insurance Scheme; National Disability Services; Department of Infrastructure & Regional Development; Dept. Environment and Conservation; Ellenbrook Arts; IDDAC; Jacksons Drawing Supplies; Country Women's Association; Embroiders Guild WA, Save the Children Fund (Hills branch); Avon Decent coordinators; Crosslinks; Kenlow Canvas; Hills Choir; Local Drug Action Group; ArtsLaw; Jackson and McDonald Lawyers; Darlington Arts Festival; Midland Gate-Vicinity Shopping Centres; Parmelia Hilton; Mundaring and Hills Historical Society; Mundaring Chamber of Commerce; Mundaring Girl Guides; Mundaring Environmental Advisory Committee; Curtin University Screen Arts, Cultural Advisory Committee; Marloo Theatre; Mundaring Electrics, Mundaring Rotary; Seen and Heard; St John of God Hospital Midland; Schools and Tertiary Institutions; DADAA WA; Peter Hopkinson; Art Matters; Swan Community Care; Midland Adult Mental Health Clinic; Gomboc Gallery; Taylors Coffee House; Eastern Metropolitan Regional Council; Donovan Village; Mundaring Sharing; Mundaring Men's Shed; Mundaring Camera Club; Collectors Club; Zeck Studios; Swan Community Troopers; Mandurah Contemporary Arts; Chamber of Culture and the Arts; Art on the Move; WASO; Grapevine Community Centre; Centenary House Midland; RISE; WALGA.

PATRONS	Jenny Mills	Dr Mark Salmon	Ron Parker
	Denis McLeod	Bruce Callow	Joan Johnson
	Patricia Weston	Jude van der Merwe	Goodeve Foundation
	Lyn and Richard Woldendorp	Jenny and Douglas Armati	

DONORS Joan Johnson, Denis McLeod, Patricia Weston, Monica Leggett, Una Bell, Gillian Meecham, Helen Dullard, Richard and Lyn Woldendorp and Madeleine Clear

MAC BOARD OF MANAGEMENT

CHAIRPERSON Jude van der Merwe

DEPUTY CHAIRPERSON Erin Taylor

TREASURER Debbie Millard

COUNCIL DELEGATE Cr David Lavell

BOARD MEMBERS Sue Starcken, Gemma Ben Ary, Caitlin Dominey, Mary Louise Carbone

MAC STAFF

DIRECTOR Jenny Haynes

FINANCE ADMINISTRATOR Narelle Doran

EXHIBITION ADMINISTRATOR Clare Stroud

ONLINE MARKETING OFFICER Ella McDonald

INDIGENOUS CULTURAL OFFICER Robyn Templeton (to 20 July 2016) PROJECT OFFICER Sarah Toohey

SHOP MANAGER Katherine Ferguson (to 31 Oct 2016)

ADMINISTRATIVE OFFICER Louella Hayes (commenced 7 Dec 2016)

CASUAL Mary Louise Carbone, Mary Ann Dawson, Tess Sabatino and Louise Cook

MAC VOLUNTEERS

Karen Adie, Amanda Alderson, John and Penny Beaton, Elizabeth Barendregt, Bonnie Barlow, Ciara Berry, Gemma Ben Ary, Jane Button, Denise Brown, Deb Browning, Nikki Buhagiar, Mikaela Castledine, Jasmine Campbell, Mary Louise Carbone, Yihsin Chang, Madeleine and Tim Clear, Sue Coates, Louise Cook, Ilse Cunningham, Mary Anne Dawson, Siobhan Dick, Heli Donaldson, Helen Dullard, Paula Dugmore, Ron Dullard, Tami Esancy, Brooke Frampton, Courtney Forward, Leanne Gielens, Mary-Ann George, Sonia Gimenez, Breanna Grant, Maureen Gregory, Dimity Gregson, Kate Guthrie, Gordon Freegard, Marie Haass, Tracy Hart, Lisa Hegarty, Amy Hussey, Marie Jacquier, Ben Joel, Anna Jones, Amber Jones, Darrell Jones, Doris Kiefer, Cr David Lavell, Charles and Dawn Lithgow, Caroline Lyttle, Peggy Lyon, Trish Macey, Leonie Matthews, Ella McDonald, Kate McHardie, Denis McLeod, Debbie Millard, Philippa O'Brien, Liz Odd, Tom O'Reilly, Kate Parker, Natalie Parsons, Lyndal Peetoom, Breanna Pitt, Stephen Raffaele, Cathy Rankin, Jenni Reimer, Andrew Samson, Ellen Sabatino, Tess Sabatino, Ann Slaven, Hillary Stacey, Melissa Statham, Sue Starcken, Bec Suardana, Patricia Sully, Cathy Swioklo, Erin Taylor, Laura Taylor, Madeleine Tholen, Sarah Thornton-Smith, Jude and Rod van der Merwe, Linda van der Merwe, Sharon Milton, Laura Vermeulen, Peter Vitalich, Elizabeth West, Kerry White, Jess Will, Deb Wilson, Nathan Williams-Labesin, Heather Wheeler, Claudia Woeltjes, Sandra Wooley, Lyn and Richard Woldendorp, Baige Zylstra

WORK EXPERIENCE STUDENTS Brianna Grant, Amber Jones, Alyssa Kay



Machines + Makers
Ironing Competition