



MAC INC.

MUNDARING ARTS CENTRE AND
MIDLAND JUNCTION ARTS CENTRE

ANNUAL
REPORT
2 0 2 2



We respectfully acknowledge the Traditional Owners and Custodians of the land on which we operate, the Whadjuk people, as well as other first Australians connected with this land. We pay our respects to Elders both past and present and their continuing connection to nurturing culture.

CONTENTS

EXECUTIVE SUMMARY	1
VISION	2
SNAPSHOT	3
CHAIRPERSON'S REPORT	4
LIGHT UP MJAC ACKNOWLEDGEMENTS	7
TREASURER'S REPORT	8
FINANCE REPORT	10
AUDITOR'S REPORT	12
EXHIBITION PROGRAM	
SUMMARY	16
MUNDARING ARTS CENTRE	18
MIDLAND JUNCTION ARTS CENTRE	24
ARTISTS IN RESIDENCE	32
EXTERNAL EXHIBITIONS	34
COLLECTION MANAGEMENT & PLACE ACTIVATION	38
VENUE HIRE	39
OUR PARTNERS	40
OUR TEAM	42
IMAGE CREDITS	44

EXECUTIVE SUMMARY

MAC Inc. is a not-for-profit organisation that creates exciting, engaging and relevant cultural experiences that enrich our communities and bring people together.

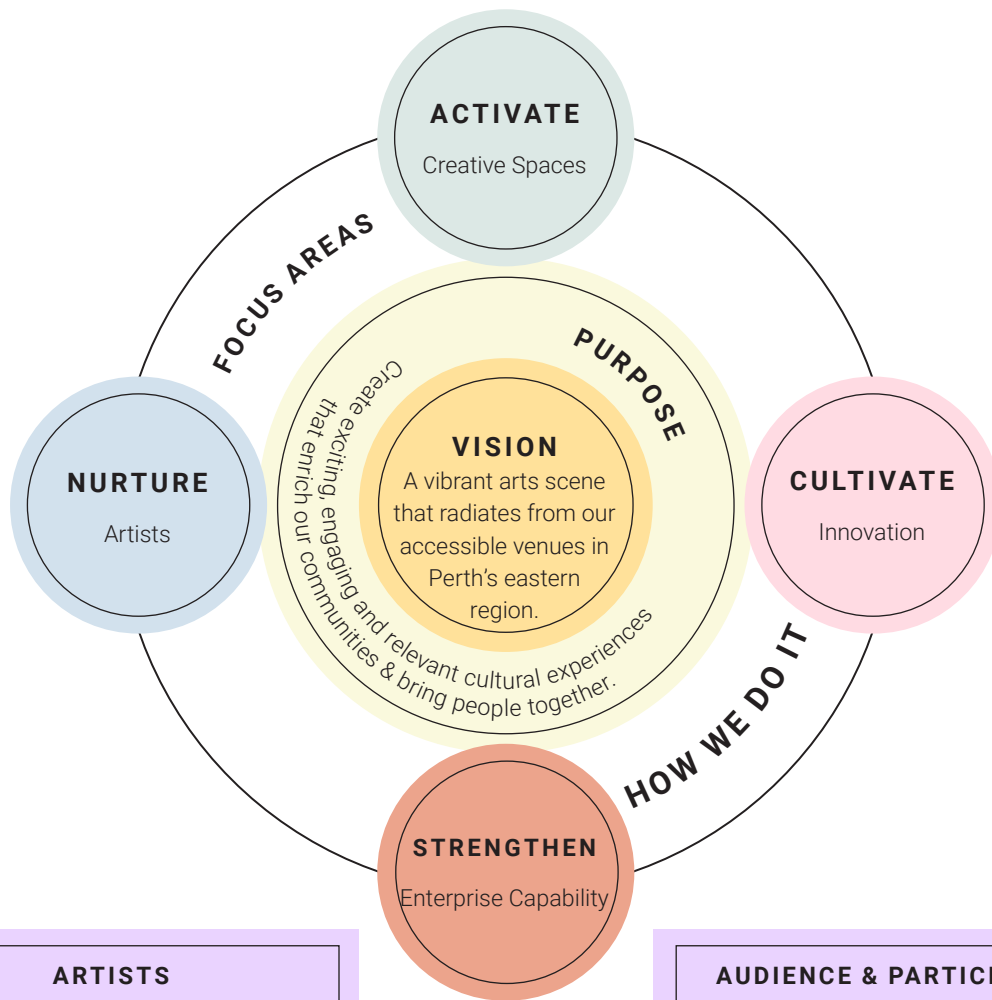
Mundaring Arts Centre (MAC) was founded in 1979 by a group of dedicated artists with a vision to create a place to nurture arts practice and connect artists to the community. MAC Inc. has evolved into a prominent arts and cultural organisation with an outstanding reputation for arts, culture and community leadership.

Since its inception, MAC Inc. has provided arts and cultural services to the Shire of Mundaring. In 2017, this service expanded to include the City of Swan, with MAC Inc. commencing management of the Midland Junction Arts Centre (MJAC). With the continuing support of these local government partners and the community of artists, audiences, and organisations we work alongside, MAC Inc. is uniquely positioned to celebrate and support the creative talents and cultural assets of our region.

2022 was a financially difficult year for MAC Inc with delays on a new lease, changing consumer behavior and post-COVID inflation. Our income was below budget, coming in at \$877,806 and we recorded a loss of \$128,979 which reduced total equity to \$30,798. In spite of this, MAC Inc.'s future is bright.

We raised \$50,000 for professional gallery lighting and developed a strong Strategic Plan.

VISION



ARTISTS

Visual / performing artists & contemporary craft makers come to us to experiment, innovate, deepen their practice, earn income, contribute to the sector, exchange ideas, comment on contemporary issues through their art, & connect with our communities; emerging, mid-career and established.

AUDIENCE & PARTICIPANTS

Individuals & community groups come to us to engage in the arts for fun, to learn, to be inspired, to connect with our artists and each other, to share their stories, explore ideas, to heal, to belong, make memories, to take a piece of art home, and to contribute to the cultural vibrancy of the eastern region; online & in our venues

**MAC INC.
ENGAGES**

WE LIVE AND BREATHE OUR VALUES. WE ARE **INNOVATIVE**.
WE ARE **IMPACTFUL**. WE ARE **INCLUSIVE**.

2022 IN A SNAPSHOT

In 2022 MAC Inc. facilitated exceptional arts experiences that celebrated diversity and inclusivity: developing knowledge, skills and economic benefit.

28,725
VISITORS
ACROSS TWO
VENUES

4,403
PUBLIC PROGRAM
PARTICIPANTS

13,956
COMMUNITY
VENUE HIRE
PARTICIPANTS

10,000
VISITORS TO
EXTERNAL
EXHIBITIONS

OVER
\$875,000
INVESTED IN
THE ARTS
COMMUNITY

ACTIVATE CREATIVE SPACES

MAC Inc. delivered quality exhibitions, events and educational experiences engendering arts and cultural development.

564
WA ARTISTS
DIRECTLY
SUPPORTED

203
WORKSHOPS
(14 ONLINE)

16
EXHIBITIONS

9
RESIDENCIES

22
PERFORMANCES

NURTURE ARTISTS

MAC Inc. collaborated with partners to create vibrant and curatorial offerings, enriching cultural tourism, connecting places, organisations and individuals.

53
ARTS EDUCATION
INITIATIVES

38
STRATEGIC
PARTNERSHIPS

33
PROFESSIONAL
DEVELOPMENT
SESSIONS FOR
ARTISTS

~\$185,000
INCOME FOR
ARTISTS
THROUGH
ARTWORK SALES

426
MAC INC.
FINANCIAL
MEMBERS

(at end of December 2022)

CHAIRPERSON'S REPORT

BREE FOMENKO

What a ride! Looking back on my first year on the Board, beyond the challenges that continue to ripple through the sector, I have been most struck by the dedication and compassion of our team. Amidst uncertainty and adversity, MAC Inc. focused on planting seeds for a bright and flourishing future.

Through hard work, perseverance and creativity, we sought to not only ensure MAC Inc.'s future but to strengthen the future of our communities, the future of the next generation of artists and to inspire change for a brighter future for our planet. As we embraced the theme of *Backyard Biodiversity*, our artistic program spoke with a strong environmental theme and we set our gaze on the roots of MAC Inc.; our connection to place and to people.

We hit the ground running with *FRINGE WORLD Festival* and launched our first major fundraising campaign *Light Up* which raised \$50,000 for much-needed gallery lighting at Midland Junction Arts Centre. Creative programming brought audiences outside to connect with nature in *It's a Matter of How You Look at Things* and *Tales of the Bush*. A masterclass in ecological storytelling unfolded in two exhibitions; *Upper Reach* and *Tracing Gondwana* both of which offered hope and possibilities for an ecologically rich future.

MAC Inc. developed its 2023-2027 Strategic Plan, contributed to the Shire of Mundaring's Reconciliation Action Plan and secured a 10-year lease for Midland Junction Arts Centre. We welcomed newcomers to the Board and staff, and farewellled long-serving friends including my predecessor, Jen Kerr, whose graceful leadership is a hard act to follow.

It is a privilege to serve on the Board of this incredible organisation which impacts the lives of so many. Our amazing team of staff and volunteers have an unparalleled ability to engender a connection between artists and community that, in my view, is invaluable. With such care, respect and imagination, our team give their full heart to everything they do, with the ultimate goal of reaching yours.

Thank you to my Board colleagues, both past and present. Our funding and program partners, Trustees, Members and Donors; thank you for believing in the work that we do.



3



4



5



6



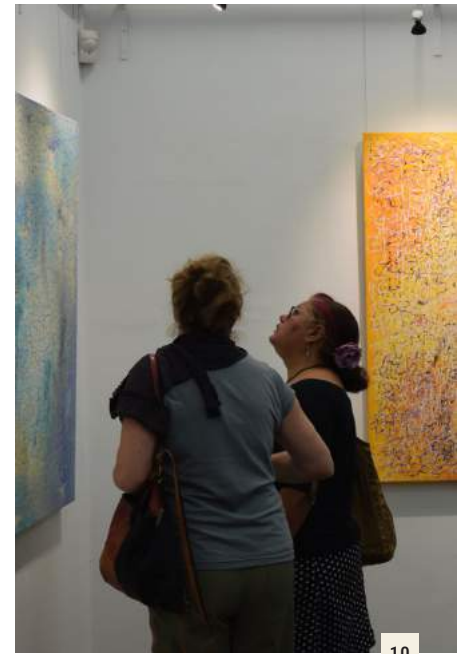
7



8



9



10



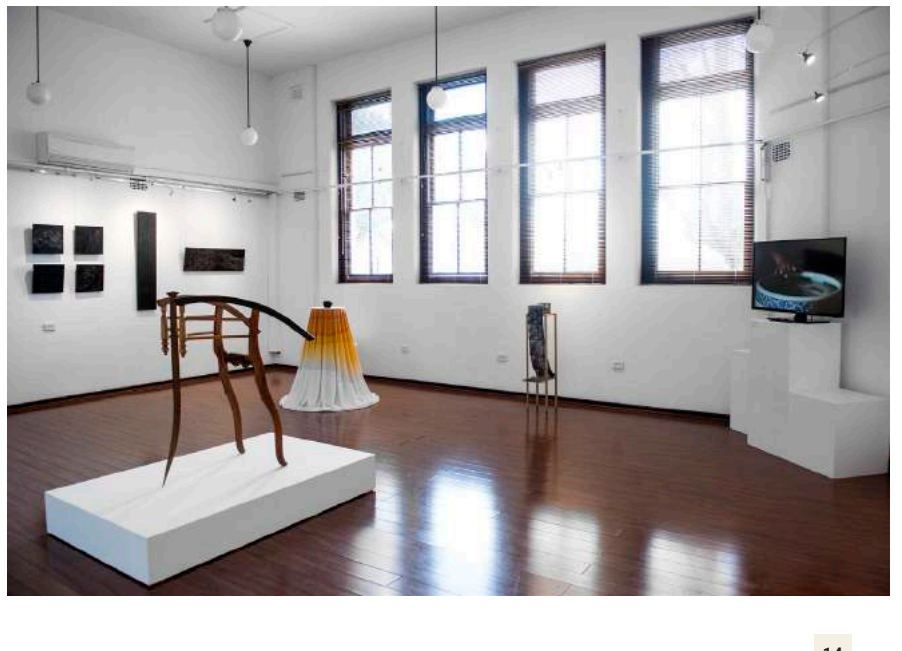
11



12



13



14



LIGHT UP MJAC

Thank you to all of our Donors whose generous support made MJAC's new gallery lighting possible.

MAC Inc's Light Up campaign was our first major fundraising initiative and part of Creative Partnerships Australia's 1:1 Matched Funding grant program. From Dec 2021 to March 2022, our Donors contributed a little over \$25,000, which enabled MAC Inc. to receive a further \$25,000 in matched funding.

This outcome was a major coup for both MAC Inc and for our exhibiting artists in Galleries 1 and 2 at MJAC. The energy efficient, professional gallery lighting now reflects the quality and professionalism that MAC Inc. is known for and, most importantly, enables our artists to present their work in the best light

TREASURER'S REPORT

**DR MARILYN
CLARK-MURPHY**

After the upheaval of the 'Covid years', 2022 was a financially difficult year for MAC Inc. We had hoped for some stability, but two major factors worked against us. Our agreement on a new lease/management agreement with the City of Swan was significantly delayed and we found that people's behaviour, preferences and spending were somewhat different in this post-Covid, higher interest rate/higher inflation world.

The management of this challenging environment has, of course, fallen largely on the shoulders of Jenny Haynes, Kate Parker (Acting Director) and Narelle Doran. They have my heartfelt thanks for their hard work and professionalism, including their support of the Board and of me as Treasurer.

OVERALL RESULT

MAC Inc. recorded a loss on net ordinary income of \$128,979 (\$52,455 over budget) and a substantial reduction in total equity to \$30,798.

INCOME

Total income for the year was \$877,086 which was \$44,639 below budget. Shop income, venue hire and workshop fees were all substantially below budget.

EXPENDITURE

Total expenses were \$589,256 which was \$36,597 over budget. This was fairly evenly distributed across the business reflecting rising costs in many areas.

FORWARD PLANNING

The new lease/management agreement with the City of Swan was finalised in January 2023 and has enabled us to move into the new year with a much greater level of certainty. The Board's goal for 2023 is financial consolidation. If this is achieved we will, in 2024 and beyond, embark on a programme of conservative growth, focussed on strengthening the organisation and rebuilding our net equity position.

In closing, I would like to thank the Shire of Mundaring and City of Swan for their continued support of MAC Inc. I also thank our auditors, SW Accountants & Advisors. A summary of MAC Inc.'s accounts are provided in the following pages, together with the Auditor's report.



semco.
PLAIN COTTON
CRAFT BAG
NATURAL 100% COTTON
100% COTTON
100% COTTON
100% COTTON

STREPTLER
100% PUBLIC

FINANCE REPORT

Mundaring Arts Centre Inc.

Full audit report and financial statements available upon request

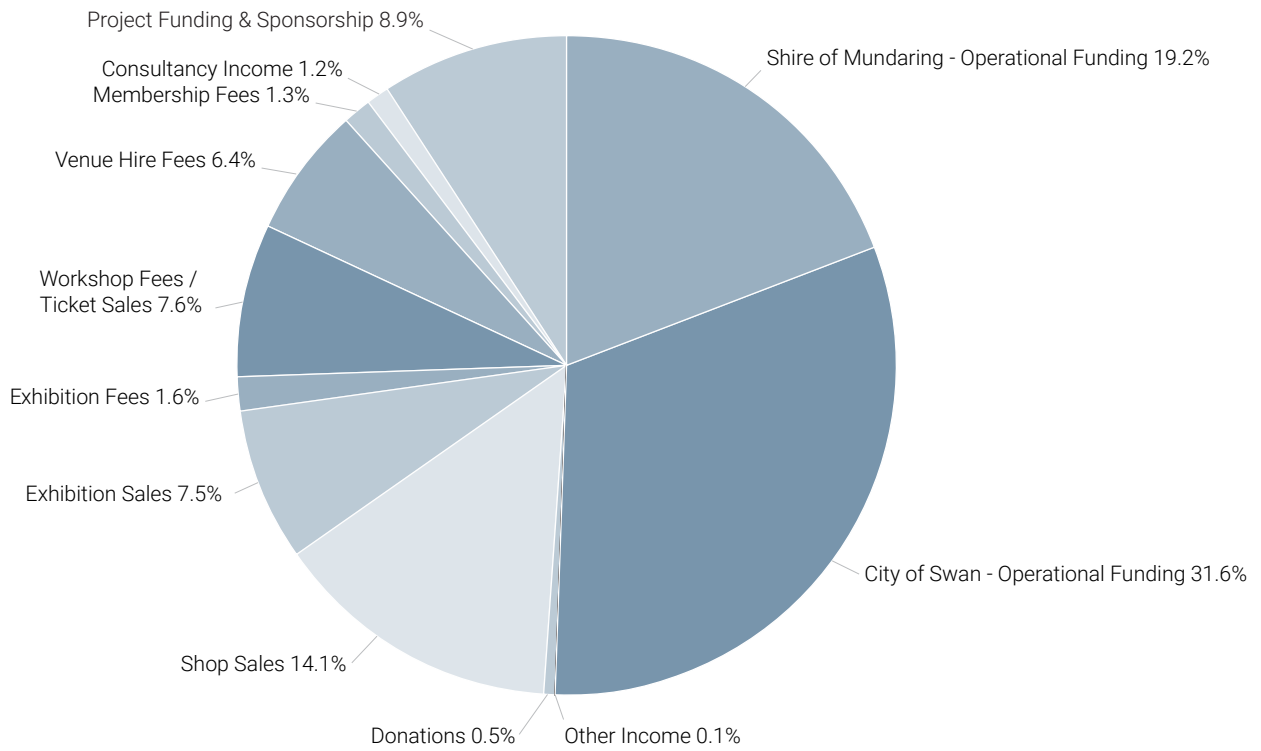
Income & Expenditure Statement 2022

INCOME	2022	2021	Variation
Operational Funding - Shire of Mundaring	\$168,259	\$164,852	2%
Operational Funding - City of Swan	\$277,000	\$277,000	0%
Project Funding & Sponsorship	\$78,201	\$249,658	-69%
Sales & Service	\$348,777	\$410,881	-15%
Administration	\$4,850	\$6,132	-21%
TOTAL INCOME	\$877,086	\$1,108,523	-21%
EXPENDITURE	2022	2021	Variation
Payments to Artists & Arts Consultants	\$222,092	\$359,328.85	-38%
Exhibition & Project Expenses	\$68,707	\$130,094.58	-47%
Consultancy Expenses	\$137	\$1,532.70	-91%
Building & Equipment Upgrades	\$1,490	\$11,537.90	-87%
Depreciation Expense	\$27,608	\$29,220.00	-6%
Administration Expenses	\$686,031	\$660,005.75	4%
TOTAL EXPENDITURE	\$1,006,066	\$1,191,720	-16%
NET SURPLUS / DEFICIT	-\$128,980	-\$83,197	-55%

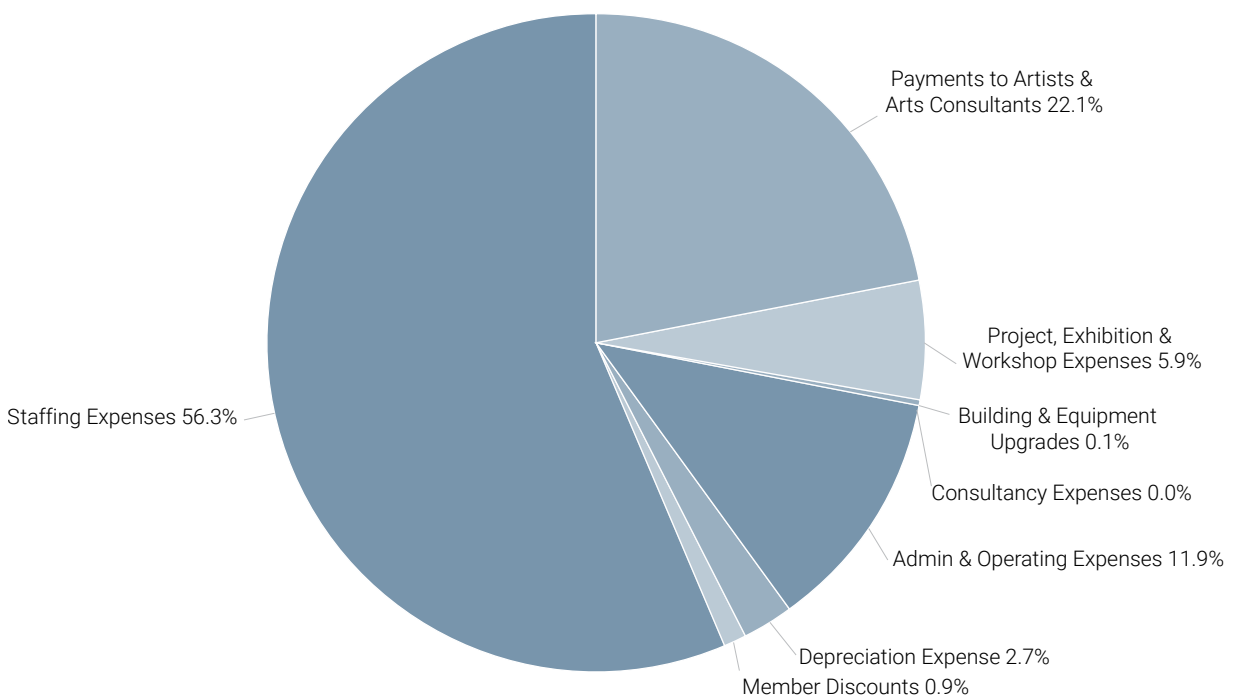
Statement of Assets & Liabilities

ASSETS	31 DEC 2022	31 DEC 2021	Variation
Cash & Cash Equivalents	\$340,870	\$519,258	-34%
Accounts Receivable	\$8,788	\$9,568	-8%
Pre-paid Insurances & Expenses	\$12,972	\$11,387	14%
Stock on Hand	\$6,086	\$5,087	20%
Furniture & Equipment	\$49,838	\$73,185	-32%
Right of Use Assets (premises)	\$1,448	\$1,924	-25%
TOTAL ASSETS	\$420,002	\$620,409	-32%
LIABILITIES	31 DEC 2022	31 DEC 2021	Variation
Accounts Payable & Accrued Expenses	\$66,331	\$79,885	-17%
Payments Received In Advance	\$138	\$12,676	-99%
Gift Vouchers to be redeemed / Bonds to be refunded	\$14,723	\$13,068	13%
Provision for Payroll Expenses	\$144,119	\$151,176	-5%
Project Grant Funding Received in Advance	\$151,187	\$169,486	-11%
Public Fund Donations held in trust	\$11,079	\$32,236	-66%
Right of Use Liability (premises)	\$1,448	\$1,924	-25%
TOTAL LIABILITIES	\$389,023	\$460,451	-16%
NET ASSETS	\$30,978	\$159,958	-81%
EQUITY	31 DEC 2022	31 DEC 2021	Variation
Retained Earnings / Capital Reserve	\$159,958	\$243,155	-34%
Net Operating Surplus / (Deficit)	-\$128,980	-\$83,197	-55%
TOTAL EQUITY	\$30,978	\$159,958	-81%

MUNDARING ARTS CENTRE INC. **INCOME 2022**



MUNDARING ARTS CENTRE INC. **EXPENDITURE 2022**



INDEPENDENT AUDITOR'S REPORT

TO THE MEMBERS OF MUNDARING ARTS CENTRE INC

Opinion

We have audited the financial report of Mundaring Arts Centre Inc (the Association), which comprises the statement of financial position as at 31 December 2022, the statement of comprehensive income, the statement of changes in equity and the statement of cash flows for the year then ended, notes to the financial statements, including a summary of significant accounting policies, and the statement by the Committee Members.

In our opinion, the accompanying financial report of Mundaring Arts Centre Inc is in accordance with Division 60 of the *Australian Charities and Not-for-profits Commission Act 2012*, including:

- a. giving a true and fair view of the Association's financial position as at 31 December 2022 and of its financial performance for the year then ended, and
- b. complying with Australian Accounting Standards to the extent described in Note 1 and Division 60 of the *Australian Charities and Not-for-profits Commission Regulation 2013*.

Basis for Opinion

We conducted our audit in accordance with Australian Auditing Standards. Our responsibilities under those standards are further described in the *Auditor's Responsibilities for the Audit of the Financial Report* section of our report. We are independent of the Association in accordance with the auditor independence requirements of the *Australian Charities and Not-for-profits Commission Act 2012* and the ethical requirements of the Accounting Professional & Ethical Standards Board's APES 110 *Code of Ethics for Professional Accountants (including Independence Standards)* (the Code) that are relevant to our audit of the financial report in Australia. We have also fulfilled our other ethical responsibilities in accordance with the Code.

We believe that the audit evidence we have obtained is sufficient and appropriate to provide a basis for our opinion.

Emphasis of Matter – Basis of Accounting

We draw attention to Note 1 to the financial report, which describes the basis of accounting. The financial report has been prepared for the purpose of fulfilling the Association's financial reporting responsibilities under the *Australian Charities and Not-for-profits Commission Act 2012*. As a result, the financial report may not be suitable for another purpose. Our opinion is not modified in respect of this matter.

Material Uncertainty Regarding Going Concern

Without modifying our opinion, we draw attention to Note 1 in the financial report, which indicates that the Association incurred a net loss of \$128,978, and had net cash outflow of \$174,601 from operating activities during the year ended 31 December 2022. These conditions, along with other matters as set forth in Note 1, indicate the existence of a material uncertainty that may cast significant doubt about the Association's ability to continue as a going concern. Our opinion is not qualified in respect of this matter.

Brisbane
Level 15
240 Queen Street
Brisbane QLD 4000
T + 61 7 3085 0888

Melbourne
Level 10
530 Collins Street
Melbourne VIC 3000
T + 61 3 8635 1800

Perth
Level 18
197 St Georges Terrace
Perth WA 6000
T + 61 8 6184 5980

Sydney
Level 7, Aurora Place
88 Phillip Street
Sydney NSW 2000
T + 61 2 8059 6800



Responsibilities of Management and Those Charged with Governance for the Financial Report

Management is responsible for the preparation of the financial report that gives a true and fair view and have determined that the basis of preparation described in Note 1 to the financial report is appropriate to meet the requirements of the *Australian Charities and Not-for-profits Commission Act 2012* and is appropriate to meet the needs of the members. Management's responsibility also includes such internal control as management determines is necessary to enable the preparation of the financial report that gives a true and fair view and is free from material misstatement, whether due to fraud or error.

In preparing the financial report, management is responsible for assessing the Association's ability to continue as a going concern, disclosing, as applicable, matters related to going concern and using the going concern basis of accounting unless management either intends to liquidate the Association or to cease operations, or has no realistic alternative but to do so.

Those charged with governance are responsible for overseeing the Association's financial reporting process.

Auditor's Responsibilities for the Audit of the Financial Report

Our objectives are to obtain reasonable assurance about whether the financial report as a whole is free from material misstatement, whether due to fraud or error, and to issue an auditor's report that includes our opinion. Reasonable assurance is a high level of assurance, but is not a guarantee that an audit conducted in accordance with Australian Auditing Standards will always detect a material misstatement when it exists. Misstatements can arise from fraud or error and are considered material if, individually or in the aggregate, they could reasonably be expected to influence the economic decisions of users taken on the basis of this financial report.

As part of an audit in accordance with the Australian Auditing Standards, we exercise professional judgement and maintain professional scepticism throughout the audit. We also:

- Identify and assess the risks of material misstatement of the financial report, whether due to fraud or error, design and perform audit procedures responsive to those risks, and obtain audit evidence that is sufficient and appropriate to provide a basis for our opinion. The risk of not detecting a material misstatement resulting from fraud is higher than for one resulting from error, as fraud may involve collusion, forgery, intentional omissions, misrepresentations, or the override of internal control.
- Obtain an understanding of internal control relevant to the audit in order to design audit procedures that are appropriate in the circumstances, but not for the purpose of expressing an opinion on the effectiveness of the Association's internal control.
- Evaluate the appropriateness of accounting policies used and the reasonableness of accounting estimates and related disclosures made by management.
- Conclude on the appropriateness of the management's use of the going concern basis of accounting and, based on the audit evidence obtained, whether a material uncertainty exists related to events or conditions that may cast significant doubt on the Association's ability to continue as a going concern. If we conclude that a material uncertainty exists, we are required to draw attention in our auditor's report to the related disclosures in the financial report or, if such disclosures are inadequate, to modify our opinion. Our conclusions are based on the audit evidence obtained up to the date of our auditor's report. However, future events or conditions may cause the Association to cease to continue as a going concern.

- Evaluate the overall presentation, structure and content of the financial report, including the disclosures, and whether the financial report represents the underlying transactions and events in a manner that achieves fair presentation.

We communicate with those charged with governance regarding, among other matters, the planned scope and timing of the audit and significant audit findings, including any significant deficiencies in internal control that we identify during our audit.

SW Audit

SW Audit
Chartered Accountants



Richard Gregson
Partner

Perth, 18 April 2023



EXHIBITION SUMMARY

In 2022, MAC Inc. enlivened Midland Junction Arts Centre and Mundaring Arts Centre by orchestrating nineteen exhibitions and hosting nine artist residencies. The exhibitions, both solo and group, offered an exploration of diverse themes, effectively showcasing the distinct creative perspectives of the featured artists.

16

The solo exhibitions provided an in-depth insight into individual artistic perspectives, while the ten group exhibitions presented a wide array of themes and interpretations. Our exhibition program partnership with DADAA and HyperVision facilitated the exposure of 58 emerging artists and artists with disabilities, enriching the overall cultural milieu.

However, there was a decrease in the total number of participating artists, falling to 564 from 672 in 2021, alongside a decline in visitor numbers to 12,397 from 13,414 the previous year. This trend is likely attributable to the increased focus on solo exhibitions and the ongoing challenges presented by the pandemic.

The overall exhibition sales in 2022 are down approximately by 2.6% compared to the previous year. The 2021 exhibition income figure was \$67,751, while the 2022 exhibition sales amounted to \$65,956. The main sales from the 2022 exhibitions came from *Transpositional* and *Country Connections*.

Transpositional, curated by Judith Hugo, brilliantly fused the contrasting art styles of Hans Arkeveld and Joan Johnson, bound together by the symbol of the wheel. This innovative display underscored the transformative power of shared ideas. *Country Connections*, curated by Sharyn Egan and André Lipscombe, exhibited a stunning collection of 190 objects and 2D artworks. The exhibition illuminated the artists' deep-seated connections with the Mundaring region and their personalised interpretations of the natural world.

Despite a reduced visitor count, these two exhibitions, which included works by acclaimed artists, succeeded in attracting collectors. This contributed to a surge in artwork sales, indicating a deeper level of audience engagement. Therefore, 2022, despite fewer visitors and artists, marked a significant step in MAC Inc.'s evolution. It demonstrated the organisation's ability to adapt and maintain relevance to its audience amidst the dynamic landscape of the art industry.

All exhibitions were freely accessible, complemented by informative floor sheets and public programs.

16

EXHIBITIONS

7 MAC
7 MJAC
2 EXTERNAL

564

ARTISTS EXHIBITED





EXHIBITION PROGRAM

MUNDARING ARTS CENTRE

5 FEB - 3 APR 2022

IT'S A MATTER OF HOW YOU LOOK AT THINGS

GALLERY 1

The rhythm of walking, the quiet time alone, and the reflective space this provides were central to this collaborative body of work by Anne Williams and Louise Wells. *It's a Matter of How You Look at Things* arose from expanding their observations and taking inspiration from the small, often-overlooked elements of their respective communities.

TALES FROM THE BUSH

GALLERY 2

For many years, John Eden has explored the Perth Hills on his bike. Wherever John goes, he finds evidence of the movements and activities of others who have gone before him. These 'landmarks', punctuating the landscape, fascinate him with their unknowable, but partly guessable, histories. The places he brought the viewer to through his work included Mahogany Creek's car graveyard, Sir Paul Hasluck's abandoned swimming pool, and the former Barton's Mill Prison.

880

VISITORS

3

ARTISTS FEATURED

SUPPORTED BY

Shire of Mundaring



19



20



21

1,351

VISITORS

18

ARTISTS FEATURED

SUPPORTED BY

Shire of Mundaring

9 APR - 19 JUN 2022

COUNTRY CONNECTIONS

SHIRE OF MUNDARING ART COLLECTION ACQUISITION EXHIBITION

GALLERY 1 & 2

Curated by Sharyn Egan & André Lipscombe

The 2022 Shire of Mundaring Open Art Acquisition Exhibition invited artists, with a continuing connection to Mundaring, to reflect on their relationship with the natural world. Mundaring is recognised for its forest reserves and waterways, which provide sanctuary to a diversity of native flora and fauna. Those who maintain a connection with the region have an enduring enthusiasm for its conservation and cultivation.

A selection of works from the Collection by Olga Cironis, Alex Boddington, Sarah Elson and Bethamy Linton were showcased as part of *Country Connections*, sharing these artists expression of identity and connection to the land through iconic objects.

Featured Artists: Madeleine Clear, Alastair Taylor, Emily Rose, Antony Mui, Tjyllyungoo Lance Chadd, Jeni McColl, Una Bell, Craig McKeough, Narayani Palmer, SpatialCo (Leonie Matthews & Peter Hill), Jane Button, Jeremy Passmore, Vanessa Curley, Melissa De Winter, Leanne Bray, Jina Lee and Bernard Kerr.

Acquisitions: Vanessa Curley, *Biodiversity*; Antony Muia, *Untitled*; SpatialCo (Leonie Matthews and Peter Hill), *Mountain Quarry A, B & C*; Tjyllyungoo Lance Chadd, *Returning*.





23



24

2 JUL - 11 SEP 2022

EXTRICATE

GALLERY 1

Curated by Shanti Gelmi

Through transformative processes, this group of emerging artists took the printmaker's craft beyond tradition. While maintaining the physical presence of the artist's hand in the work, the artists revealed outcomes using non-traditional materials, scale and form, following chance revelations and surprising serendipities into an expanded practice.

Artists Featured: Jane Button, Shanti Gelmi, Louise Grimshaw, Isaac Huggins, Eveline Ruys and Kristy Scaddan.

“

Enjoyed both Extricate and Repositioning a Place In The Heart, inspiring fresh ideas to explore in my own art practice. The exhibitions were beautifully presented, working cohesively together, and thought-provoking. Extricate was particularly remarkable, exploring and experimenting with medium and ideas in a complex way.

REPOSITIONING A PLACE IN THE HEART

GALLERY 2

Through a series of 'en plein air' paintings, Annette Peterson reinterpreted her dad's memories of life at Parkerville Children's Home in the 1950s. Annette began researching and recording his story during an artist residency at Midland Junction Arts Centre. This was followed by a residency at Parkerville Children's Home, where she created site-responsive works while re-listening to her dad's history. Her dad's story emerged through the paintings, his emotive response intersecting with her own.

1,545

VISITORS

7

ARTISTS FEATURED

158

PUBLIC PROGRAM PARTICIPANTS

SUPPORTED BY

Department of Local Government Sport and Cultural Industries
(Extricate)

Shire of Mundaring



25



26

8 OCT 2022 - 26 FEB 2023

TRANSPOSITIONAL

GALLERY 1

Curated by Judith Hugo

Partners in life, artists Hans Arkeveld and Joan Johnson are quite disparate in their work practices and use of materials. Whilst Hans' figures and materials are classic and solid, Joan's are contemporary, light and translucent - but both are interlaced with a quirky sense of humour and wry questioning of personal and societal values.

In this exhibition, their differences were united in the common usage of an iconic, historically loaded symbol - the wheel - the vehicle by which their ideas were transposed from one to the other, enabling subtle shifts in their artistic output.

THE SUM OF US

GALLERY 2

The Sum of Us celebrated the work of a group of students, brought together by a botanical art course in Perth with artist and fellow student Margaret Oversby. The group continued to meet, with Margaret arranging sessions to allow the pursuit of their passion and exploration of various styles of botanical art. Margaret has since passed away. This exhibition acknowledged her role in the formation of this diverse, supportive, and talented group, with a selection of her works included in the display.

Artist Featured: Jeanne Scott, Jennifer Amer, Maimunah Abdullah, Margaret Bradford Seeley OAM, Robyn Edwards, Susan Perrett and Margaret Anne Oversby (dec.).

“

The Sum of Us beautifully pays tribute to Margaret Oversby's legacy, showcasing art that unites the strength and celebrates the long-lasting friendship of a diverse and talented group through their shared passions for botanical art.

2,074

VISITORS

9

ARTISTS FEATURED

152

PUBLIC PROGRAM PARTICIPANTS

SUPPORTED BY

Department of Local Government Sport and Cultural Industries
(*Transpositional*)

Shire of Mundaring

“

Transpositional, a collaboration between artists Joan Johnson and Hans Arkeveld, represents a convergence of their artistic journeys. Focused on the concept of movement through the wheel, the exhibition explores connections between heritage, migration, relationships, and the essence of humanity. A new exploration for Johnson and a continuation of a theme for Arkeveld, the works unify to tell a story filled with complexity and grace.





EXHIBITION PROGRAM

MIDLAND JUNCTION ARTS CENTRE

SHAPING SPACE | HOLDING SPACE

EAST GALLERY

Shaping Space | Holding Space, was a group exhibition exploring one of the fundamental principles of ceramics - the manipulation of space. When creating a vessel, it is not the shape that the maker focuses on but rather the space it contains. Space can be interpreted in both a literal and abstract sense and each artist chose to explore it through their own lens.

Artists Featured: Coby McDougall, Deanne Jecks, Emma Vinkovic, Lauren Wright, Paul O'Connor, Stella Sulak and Tracey Pinker.

MADE IN MIDLAND

WEST GALLERY

Celebrating half a decade of creative endeavor at Midland Junction Arts Centre (MJAC), this Pop Up showcased a selection of bespoke handmade arts and crafts. Works were created by talented tutors, artists in residence and students who contributed to making MJAC the creative hub it is today.

Artists Featured: Alastair Taylor, Alida Cappelletta, Amy Perejuan Capone, Angela Ferolla, Ann Ong, Anne Williams, Antony Muia, Ben Joel, Bernard Kerr, Carolyn Francis, Deadly Denim - Rebecca Rickard, Den Scheer, DADAA - Dylan and Chris, Eva Fernandez, Fiona Gavino, Greg Crowe, Harriet Perryer, Harrison See, Holly O'Meehan, Ingrid Mulder, Jennifer Cochrane, Joanne Parfitt, Jude Taylor, kake, Kaitlyn Elsegood, Katrina Virgona, Lea Taylor, Lee Woodcock, Lesley Parker, Liliana Stafford, Lindsay Malay, Louise Hammill, Luke Morgan, Madeline Tholen, Marina van Leeuwen, Martien van Zuilen, Norma MacDonald, Peter Dailey, Pip Lewi, Robbie Kerr, Ryan Ahern, Sarah Thornton-Smith, Sarah Toohey, Sarah Zel Chescoe, Sian Boucherd, Sophie Nixon, Sultana Shamshi, Susie Vickery, Tami Esancy, Tina Bryce, Trish Bygott and Veta Holmes.

1,238

VISITORS

7

ARTISTS FEATURED IN
SHAPING SPACE | HOLDING SPACE

52

ARTISTS FEATURED IN
MADE IN MIDLAND

39

PUBLIC PROGRAM
PARTICIPANTS

SUPPORTED BY

City of Swan



29



30

7 MAY - 16 JUL 2022

UPPER REACH

EAST GALLERY

Developed during an artist residency at Midland Junction Arts Centre, this body of work was inspired by the unique flora and fauna found in Perth's eastern suburbs and hills. Antony Muia explored the synergy between figuration and the natural world, and considered the history and traditions of the printmaking genre, including its strong ties to illustration and storytelling. These experimental etchings reflected both the representational qualities of our surroundings and the relationships of people with the environment.

“

Antony's work transports you to another world with such incredible details. It's enchanting!



QUIDDITY

WEST GALLERY

Presented by DADAA

Quiddity means the true nature of a thing or its essence. Featuring artists who worked out of DADAA's studios in Midland, Lancelin, and Fremantle, *Quiddity* explored differing ideas of portraiture. Each artist went beyond simply depicting their subject's physical likeness, instead aiming to capture the essence of their subject using a variety of mediums and approaches.

This exhibition was a continuation of the annual *In Focus* exhibition program at Midland Junction Arts Centre. For the past decade, this program has given artists from DADAA's studios the opportunity to participate in exhibitions, workshops, and performances. *In Focus* has at its heart the social values of identity and disability, expressed through the telling of individual perspectives, stories, and experiences.

Artists Featured: Simon Marchment, Marina Psaila, Marie Tierney, Aaron Sabatino, Trinity Williams, Andrea Carter, Nathan Scott, Deidre Gillespie, Nadia Leahy, Aiden Leahy, Greg Harler, Mandy White, Prudence Dunkley, Leon Ng, Ashley Odgers, Dylan Davies, Paul Mitchell, Jay Downey, Kyle Quinn, Ann McGrath, Suzy Khouri, Fiona Williams, Sharon Krywood, Baron Barton and Tom Lindenwood.

“

Quiddity goes beyond mere physical likeness in portraiture, venturing into the essence of the subject. This exhibition centers on identity and disability, capturing the core through individual perspectives, stories, and experiences.

552

VISITORS

26

ARTISTS FEATURED

SUPPORTED BY

City of Swan

DADAA & Lotterywest (*Quiddity*)

DRUG AWARE HYPERVISION: TIME

EAST, WEST AND HALLWAY GALLERIES

Presented by the City of Swan Hyper Team

Drug Aware HyperVision is an annual exhibition promoting the creative expression and talents of young people aged 15 - 25 years from across WA. This year's exhibition showcased works across a diverse range of traditional and experimental media, including digital and sculptural installations. Artists responded to the word 'time' and presented their interpretation of the relationship between time and the COVID-19 pandemic.

199

VISITORS

32

ARTISTS FEATURED

SUPPORTED BY

City of Swan

Healthway Drug Aware

“

Hypervision unites young artists in a striking exploration of self. The artworks not only reflect personal perceptions but also resonate with lessons learned in isolation during the COVID-19 pandemic.



33



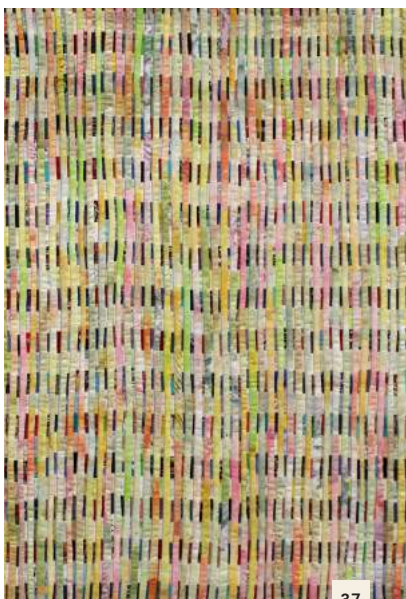
34



35



36



37



38

1208

VISITORS

40

ARTISTS FEATURED

12

ARTISTS IN RESIDENCE

108

PUBLIC PROGRAM PARTICIPANTS

SUPPORTED BY

City of Swan,
The West Australian Quilters Association Inc and
Handcrafters House

10 SEP - 5 NOV 2022

STITCHED AND BOUND

EAST AND WEST GALLERIES

Presented by the West Australian Quilters Association Inc

This biennial, juried exhibition displayed the innovative work of Western Australian textile artists challenging the concept of the 'quilt' medium. 45 works were selected for their skilful combination of traditional and unconventional quilted forms, pushing boundaries and making statements using progressive materials, ideas and techniques.

Artists Featured: Vicki Ames, Tracey Bareli, Delys Brady, Janette Campbell, Marilyn Clark-Murphy, Robyn Clout, Lesley Clugston, Myra Cornwell, Meg Cowey, Ruth de Vos, Tracy Destree, Julie Devereux, Jan Dunstan, Jan Fisher, Shelagh Fitzpatrick, Erin Ginty, Margery Goodall, Meagan Howe, Janine and Peter Judge, Lana Lefroy, Susan Mader, Denise Mallon, Julie McAllister, Cindy Morris, Carol Patrick, Jan Rowe, Frances Dorothy Schifferli, Carolyn Scott, Nadja Sevic, Susan Sheath, Caitlin Stewart, Jane Stone, Helen Sugars Duff, Philippa Thomas, Lesley Warren, Barbara Weeks, Louise Wells, Anne Williams and Judith Wilton.

19 NOV 2022 - 18 FEB 2023

TRACING GONDWANA

EAST AND WEST GALLERIES

In partnership with Gondwana Link

Tracing Gondwana celebrated the ancient landscapes of the Great Southern – one of the richest biodiversity hotspots on the planet. A creative collaboration between printmakers Nikki Green, Monika Lukowska and writer Reneé Pettitt-Schipp, resulted in a body of work responding to the current climate emergency. Weaving words and image through printmaking processes, *Tracing Gondwana* evoked a personal sense of hope amidst an extremely vulnerable and threatened ecological time.

“

Beautiful sensitive work and stunning exhibition opening. Thank you, this project brought some hope into the climate change and environmental debate for me and I am sure others too.

814

VISITORS (446 in 2022)

3

ARTISTS FEATURED

68

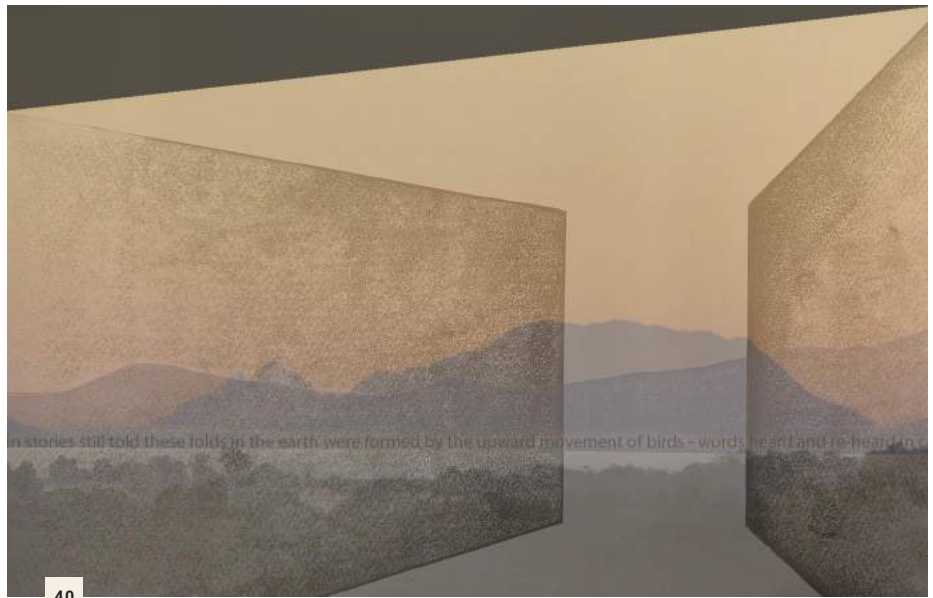
PUBLIC PROGRAM PARTICIPANTS

SUPPORTED BY

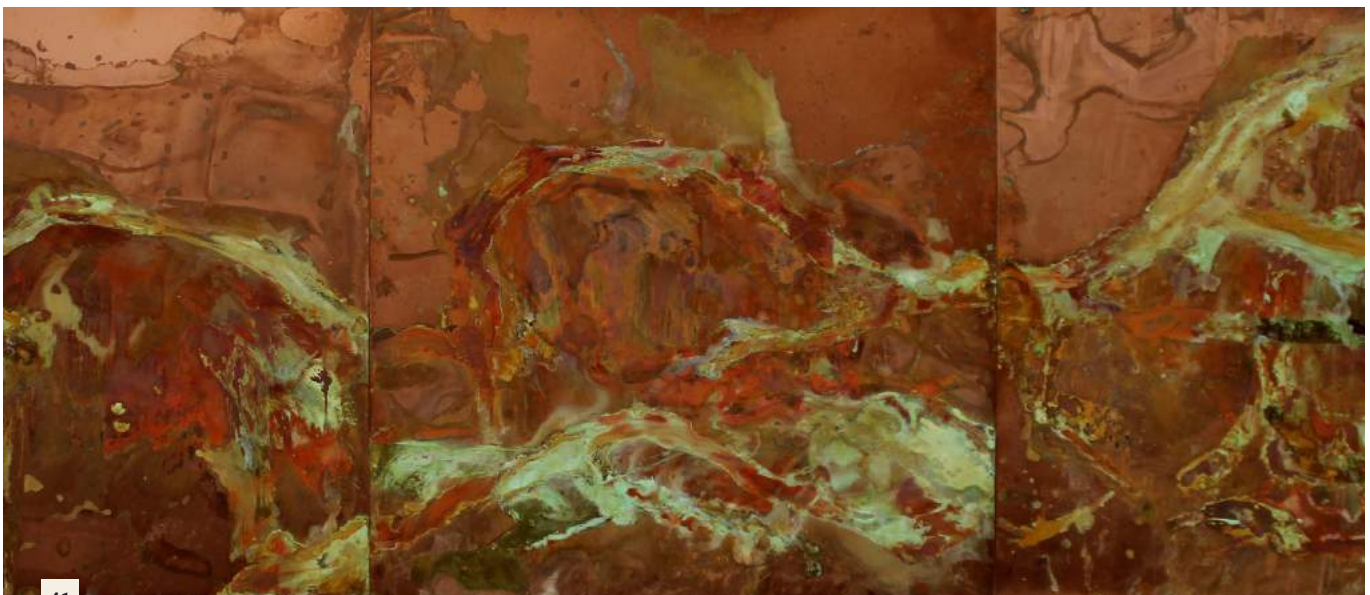
City of Swan and Gondwana Link



39



40



41



ARTIST IN RESIDENCE PROGRAM

MIDLAND JUNCTION ARTS CENTRE

SUMMARY

Midland Junction Arts Centre (MJAC) hosted a dynamic artist in residency program in 2022, featuring a wide range of artistic practices. The program welcomed artists in dance, theatre, literature, visual arts, textile arts, and a special partnership project, showcasing MJAC's commitment to supporting diverse creative endeavors.

Among the visual artists, André Lipscombe, Marina van Leeuwen, and Luke Morgan each explored unique themes. Lipscombe undertook an experimental painting residency, utilising pours, veneers, and erasures to communicate his connection to the world and his medium. Van Leeuwen delved into the sensory experience of time through a print-based project with natural motifs. Morgan addressed themes of social control and mental health, fostering essential dialogues through his work.

The *stitched and bound* textile artist group redefined quilting during their residency, demonstrating the potential of a residency to effectively engage the local community. Their residency coincided with the West Australian Quilters' Association's exhibition, where they showcased innovative pieces and hosted daily studio openings and workshops, enriching the local textile scene.

Dancer Muriel Hillion Toulcanon dedicated her residency to developing a Maloya dance syllabus, a unique improvisational art form from Réunion Island. Toulcanon's research aimed to develop a contemporary teaching model, making it accessible to professionals and community enthusiasts.

Literary artist Bec Bowman worked to bridge the gap between the art world and the broader community through her writing. The program's inclusive ethos was highlighted by DADAA's involvement, an organisation that facilitated residency opportunities for artists with disabilities or mental health issues.

A standout feature was the collaboration with the performance arts collective Whiskey & Boots. They created *The Quadrangle*, a project showcasing performances by children aged 6 to 16, complemented by live music. MJAC's contribution of studio and additional spaces allowed the project to engage younger audiences, positioning MJAC as a significant catalyst for creative development.

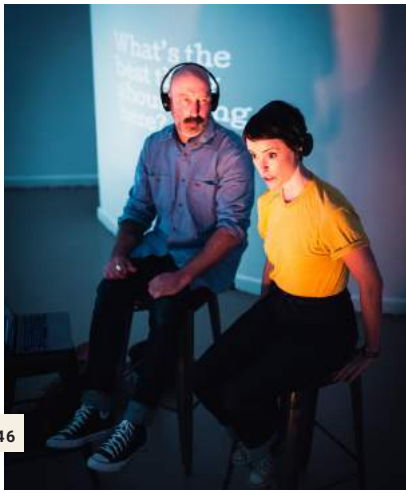
In 2022, MJAC's artist-in-residency program reaffirmed its dedication to nourishing diverse artistic practices and establishing strong ties between artists and the community. By transforming itself into a vibrant meeting place, MJAC has solidified its role as a central cultural hub in Perth's Eastern region.

9

RESIDENCIES

29

ARTISTS



46

WHISKEY & BOOTS

14 DEC 2021 - 13 FEB 2022

Whiskey & Boots listened to and recorded the ideas of young people from the community of Midland for their verbatim performance *The Quadrangle* at Midland Junction Arts Centre in February 2022, reflecting on who the children were, their world, and their future.



47

ANTONY MUIA

31 JAN - 17 APR 2022 | STUDIO 1

Muia developed a body of experimental etchings inspired by the unique and diverse flora and fauna found in Perth's eastern suburbs and hills. Using several different printing techniques on a single artwork, the outcomes were exhibited in his solo exhibition *Upper Reach* at Midland Junction Arts Centre, opening 6 May 2022.

DADAA

14 FEB - 17 APR 2022 | STUDIO 2

Various artists connected to DADAA's Midland Hub worked in residence across a variety of mediums. DADAA is a leading arts and health organisation that creates access to cultural activities for people with disability or mental illness.

LUKE MORGAN

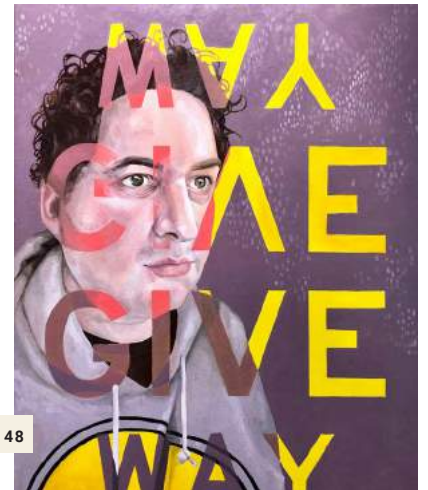
15 FEB - 23 APR 2022 | STUDIO 2

Morgan, an artist and arts educator, continued developing a body of work encompassing painting, ceramic sculpture and printmaking that explored themes of social control, wellbeing, mindfulness and mental health.

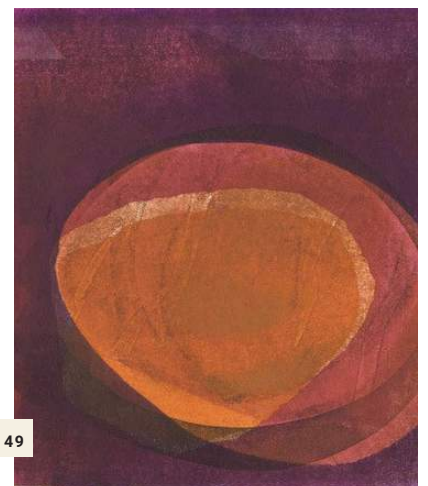
MARINA VAN LEEUWEN

25 APR - 10 JUL | STUDIO 1

Is time a sensory experience? In this print-based project, van Leeuwen explored transparency, layering and repetition to mark the passage of felt time in a personal chronography. Using natural forms, a recurring motif, these unique state monoprints utilised handmade stencils, found textures and drawing techniques as markers of unfolding events and traces of memory.



48



49

BEC BOWMAN

2 MAY - 10 JUL 2022 | STUDIO 2

With a belief that everyone should be able to access the conversations that happen around art, Bowman wrote for and in response to the arts using forms (zines and audio) that have low barriers of access for the community.

ANDRÉ LIPSCOMBE

1 AUG - 17 DEC 2022 | STUDIO 1

André Lipscombe trialled experimental methods of painting over the course of his residency. André is a visual artist based in Perth, represented by Art Collective WA, whose practice focuses on a formalist approach to painting and drawing.

STITCHED AND BOUND

3 AUG - 9 NOV | VERANDA STUDIO

Alongside the West Australian Quilters' Association's *Stitched and Bound* exhibition, 12 local contemporary quilt artists worked in residence, challenging the concept of the 'quilt' medium and producing new works.



50



51



52

“

Stitched and Bound showcases incredible talent and imagination. The diverse techniques and inviting residency space make visitors want to linger and explore the exhibition further.



53

MURIEL HILLION TOULCANON

15 AUG - 17 DEC 2022 | STUDIO 2

Investigating a range of traditional dance techniques Muriel's residency focused on the development of a dance syllabus for Maloya dance. Researching this originally improvised art form, born out of slavery on Réunion Island in the 17th century, Muriel aimed to identify common movements across the practice of the dance to develop a contemporary model of teaching for professional dancers and community members with an interest in Maloya choreography, music and performance.



EXTERNAL EXHIBITIONS

17 DEC - 26 MARCH 2023

CULTIVATE

BOYA COMMUNITY CENTRE

Residents of the Shire of Mundaring, City of Swan, members of Mundaring Camera Club and Mundaring Arts Centre were invited to investigate key messages in response to the theme Cultivate. The images captured related to each photographer's area of interest, depicting environmental protection; First Nations culture; adaptations of the land; the cultivation of plant species or our relationships with place and people.

The *Cultivate* competition and exhibition was the 6th presentation created in partnership between the Mundaring Camera Club, Mundaring Arts Centre Inc. and Shire of Mundaring.

36 photographs were presented.

ARTISTS

Beth Baker, Isaac du Boulay, Solomon du Boulay, Tamara Kabat, Julie Kenny, Hayley Laing, Andre Lebel, Francisca Lebel, Carol McGrath, Corey Norris, Christian Woodward, Greg Barrett, Paul Bastian, Rene Baur, Tracey-Ann Bester, Ron Dullard,

~11,000

VISITORS

SUPPORTED BY

Shire of Mundaring

Mundaring Camera Club

Boya Community Centre

MAC Inc

ENVIROMENTAL ART PROJECT 2022

Over 1,900 primary school students from Perth's eastern region created their own unique artwork exploring local biodiversity as part of MAC Inc.'s 21st annual Environmental Art Project. The students from 22 schools, as well as a number of home-school students, each responded to the theme of Backyard Biodiversity, which challenged them to look closely at nature, discover the animals and plants that live in their local area, and how to promote their survival.

A walking trail was created from 10 artworks selected from students in the City of Swan. The trail, which led from MJAC to Weeip Park, activated Midland's footpaths whilst highlighting features of the local landscape and biodiversity. A ceremony was held in November to launch the trail that remained on display for 6 months thanks to support from the City of Swan. Awards were presented by the City of Swan Mayor David Lucas.

A further 16 selected entries from students in the Shire of Mundaring were printed onto large scale banners with support from the Shire and were hung in the rose gardens outside Mundaring Village Shopping Centre until late 2023. Shire of Mundaring Deputy President, Cr Paige McNeil presented the awards in Mundaring.

All of the nearly 2,000 artworks received are available to view in an online exhibition at enviroartproject.com.au. Thanks to the support of the Department of Local Government, Sport and Cultural Industries, this website serves as an ongoing online resource for teachers, and as an archive of the region's young people's artistic talents and passion for environmental protection.

Three video tutorials and an education resource pack were developed with artist and educator, Angela Rossen, including how to create a garden that is friendly to native animals.

23 PARTICIPATING SCHOOLS

Anne Hamersley, Aveley, Bakers Hill, Chidlow, Darlington, Gidgegannup, Glen Forrest, Guildford, Helena College, Helena Valley, Home Schools, John Wollaston, Malvern Springs, Middle Swan, Moorditj Noongar Community College, Mount Helena, Mundaring Christian College, Mundaring, Parkerville, Pickering Brook, Sacred Heart, Treetops Montessori and Wundowie

26 WINNING DESIGNS

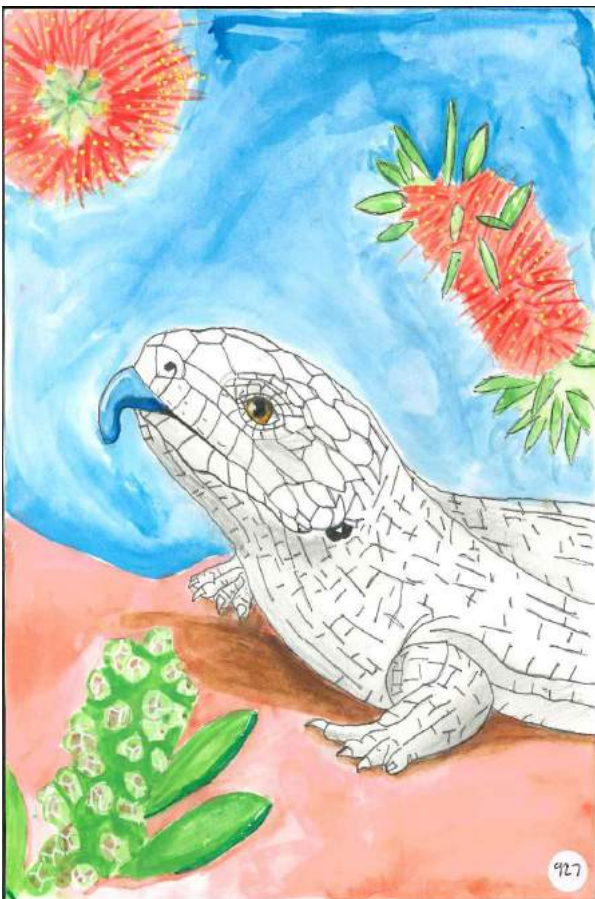
Transformed into street banners for display in Mundaring, and a walking trail transferred onto the footpaths of Midland, from MJAC to Weep Park

25 HIGHLY COMMENDED AND PEOPLE'S CHOICE AWARDS

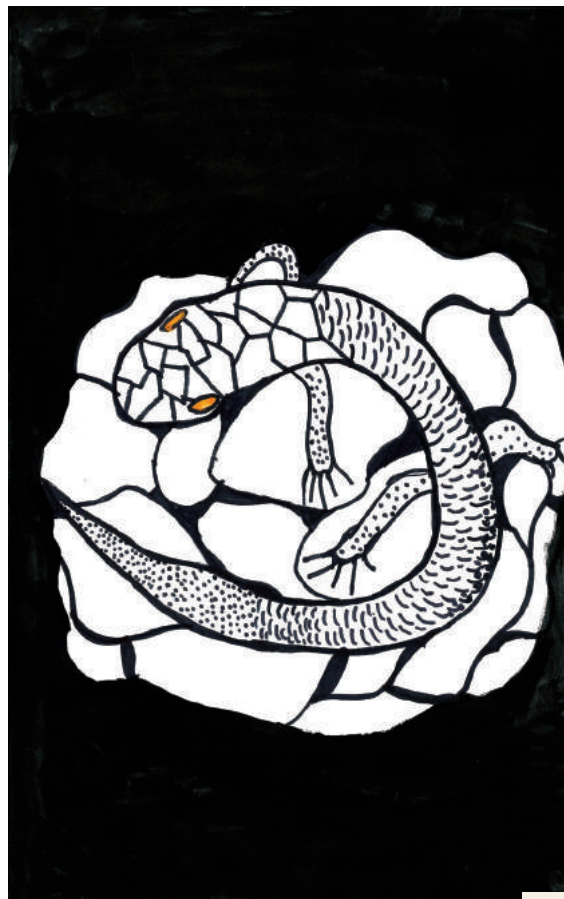
“

At the City of Swan, we are committed to delivering sustainable services and programs in partnership with our schools and communities... We're proud to support Mundaring Arts Centre Inc.'s Environmental Art Project, their broader community arts program, and their management of Midland Junction Arts Centre.”

- CITY OF SWAN MAYOR CR DAVID LUCAS



44



45

THE SHOP

The MAC Inc. Shop is distinguished by excellence for maintaining high-quality arts and crafts in the eastern region of Perth. Showcasing the work of over 180 artists from Western Australia, including emerging, established and First Nations artists, The Shop promotes a balance of contemporary and traditional practices connecting people, inspiring creativity, and contributing to the local economy.

Often curated to complement the galleries' exhibitions, the retail spaces at MAC and MJAC have become highly regarded destinations to purchase art objects and gifts for local and international audiences. Focusing on a cohesion between gallery and retail, we now offer exhibiting artists a shop channel to extend the artists' sales potential.

The MAC Inc. online shop gives the digital audience a visual platform to view a steady stream of collections and is steadily growing in popularity.

In 2022 we attracted over 28,000 visitors to our venues. Our front-of-house volunteer team is exceptional and known for a high standard of customer service.



VENUE HIRE

Providing venue hire for community-led arts and culture activities, Midland Junction Arts Centre (MJAC) offers a 142-seat theatre, ceramic and print studios, multi-purpose classrooms, a function room, as well as a range of workspaces for artists, workshops and meetings.

In 2022 MJAC welcomed over 77 community groups, with a total attendance at these community-run programs of approximately 13,700 participants. Hirers included local artists, arts and creative groups, not-for-profit entities, as well as health and community-focused organisations. Commercial enterprises and government organisations also made use of MJAC's spaces throughout the year.

Highlights of the 2022 community-run program included on-going relationships with Indigo Junction, DADAA, Creative Wellness for First Responders, Hills Symphony Orchestra, Barking Gecko Theatre, Trinity Irish Dance Studio and Veena's School of Indian Dance among many others. Fringe Festival delivered a diverse range of acts with MJAC welcoming theatre acts *2 Marys*, *Best Bedtime Stories* and the *LoCale* spotlight series. Dance acts included *Where is the Happiness? Island Vibrations*: from Maloya to Séga and The Midland Dance Studios. *Toy Stories* was a hit in the gallery spaces and evening openings were made available to Fringe Festival attendees.

Throughout the year MJAC proudly hosted a breadth of diverse events which included the Youth Futures school graduation ceremony, the 2022 Headspace Day event, and the Maker & Smith workshop intensive with international lacemaker Pierre Fouche.



OUR PARTNERS

MAC Inc. nurtures collaborative relationships with external stakeholders, such as artists and their representatives, other galleries, universities, schools, the business sector, the media, the Government and the wider community. These relationships help us to present programs of significant value.

FINANCIAL PARTNERS

City of Swan

Shire of Mundaring

Department of Local Government,
Sport and Cultural Industries WA

Lotterywest

Creative Partnerships Australia

Jacksons Drawing Supplies

The Framing Factory



PROJECT PARTNERS

PRIMARY SCHOOLS

Anne Hammersley Primary School, Aveley Primary School, Bakers Hill Primary School, Chidlow Primary School, Darlington Primary School, Gidgegannup Primary School, Glen Forrest Primary School, Helena College, Helena Valley Primary School, John Wollaston Anglican Community School, Malvern Springs Primary School, Middle Swan Primary School, Moorditj Noongar Community College, Mount Helena Primary School, Mundaring Christian College, Mundaring Primary School, Parkerville Primary School, Pickering Brook Primary School, Sacred Heart School, Treetops Montessori School and Wundowie Primary School

SECONDARY SCHOOLS

Kalamunda Senior High School and Perth College

OTHER

Aboriginal Arts Centre Hub WA
AGWA Gallery Guides Association
Carnegie Studios
Chamber of Arts and Culture WA
Community Arts Network
Curtin University
DADAA Fremantle and Midland
Darlington History Group
Eastern Metropolitan Regional Council
Edith Cowan University
Ellenbrook Cultural Foundation
FRINGE WORLD Festival
Gondwana Link
Handcrafters House
Hyper Team City of Swan
Indigo Junction Midland
Jacksons Drawing Supplies
Katharine Susannah Prichard Writers' Centre
KISS Club
LoCale
Maker and Smith
Mundaring Adult and Creative Learning Centre
Mundaring and Boya Libraries

Mundaring and Hills Historical Society
Mundaring Bicentennial Scholarship Trust
Mundaring Camera Club
Mundaring Chamber of Commerce
Mundaring Hills Open Studios
Mundaring Visitor Centre
Parkerville Childrens' Home
Perth Hills Future Perth Hills
Printmakers Association of WA
Propel Youth Arts
pvi collective
Rotary Club of Mundaring
Shire of Mundaring Environmental Advisory Committee
Stitched and Bound
Swan View Youth Centre
Swan Volunteer Resource Centre
Talkie Tearooms
University of Western Australia
WA Fibre and Textiles Association
WA Quilters Association
Walker Wayland WA
Whiskey & Boots

OUR TEAM

BOARD

Chairperson: Jenny Kerr (to May), Bree Fomenko (from May)

Deputy Chairperson: Andre Lipscombe (to May), Jenny Kerr (from May)

Treasurer: Marilyn Clark-Murphy

Secretary: Helena Freeman (from Jun)

Shire of Mundaring Delegate:
Cr Neridah Zlatnik

Board Members: Andre Lipscombe (to May), Annalisa Oxenburgh (to May), Bree Fomenko, Bruce Leyland, Darrell Jones (from Oct), Deena Appleby (from Oct), Helena Freeman (from May), Jenny Kerr, Kate Parker (to Sep), Leanne Bray (to May), Marilyn Clark-Murphy, Michelle White (from Dec) Paris McNeil (from Oct)

STAFF

Director: Jennifer Haynes

A/Director: Kate Parker (from Sep)

Finance Controller: Narelle Doran

Artistic Program Manager: Ashley Yihsin Chang (from Aug)

Exhibition Administrator: Sophie Hick

Education Program Manager: Jess Boyce

Bookings Officer: Shannon Baggott (to Feb), Ellen Erceg (Mar) Nikki Lundy (from Apr)

Communications Officer: Shannon Pearce (to Sep)

Communications and Marketing Officer: Ella McDonald

Shop Manager: Kristy Scaddan

Shop Assistant: Monika Haag

Administrative Assistant and Kiln Technician: Clare Stroud

Technical Support: Liz Knuckey (to Aug)

Casual staff: Benjamin Lowther, Elizabeth Smith, Liz Knuckey, Heather Bosch, Morgyn Dreaver, Nikolina Binevski, Rafael Leone, Rodney Bayliss, Sarah Soulay



57

MAC INC MEMBERS

MAC Inc. is a not-for-profit membership-based organisation, that grows with community involvement and participation. Annual Memberships are available to individuals, businesses, schools and organisations. At the end of December 2022 there were 425 Financial MAC Inc. Members

THANK YOU TO THE VOLUNTEERS WHO SUPPORT MAC INC.

Carol Langdon, Mary Ann Dawson, Sue Coates, Annabelle Gallon, Monika Haag, Amy Hussy, Tami Esancy, Rafael Leone, Robyn Pascoe, Caleb Zhao, Jackie Davis, Jane Pearsall, Morgyn Dreaver, Andrew MacKinnon, Jenny Kerr, John Beaton, Jude van der Merwe, Denis McLeod, Ron Dullard, Dr. Marilyn Clark-Murphy, Amanda Alderson, Annalisa Oxenburgh, May Tsai', Bree Fomenko, Bruce Leyland, Darrell Jones, Deena Appleby, Helena Freeman, Kate Parker, Leanne Bray, Marilyn Clark-Murphy, Michelle White, Paris McNeil

INTERNSHIPS

Heather Bosch (Curtin University) , Sarah Soulay (Curtin University)

WORK EXPERIENCE STUDENTS

MAC Inc. engages high school and tertiary students as volunteers, offering mentorship through projects, exhibition installs and invigilation as well as general work experience.

Jasper Rogers (Indie School Midland) Mya Earle (Treetops Montesor), Neeve Blackham-Jennings (Perth Waldorf)

IMAGE CREDITS

FRONT COVER

Clockwise from top left: wheel-throwing workshops; Antony Muia, *Lake Karri* (detail), 2022, etching and Chine collé on hand coloured paper; selection of wares from the MAC Shop by Jean Norman, Sian Boucherd, Miguel Castro Leñero and Tanya Jaceglav; Kristy Scaddan, *Expendable Part I (detail)*, 2022, enamel screen-printed, kiln-fused glass. Photograph by Laura Sykes

INSIDE

1. Monika Lukowska, *Topographies I (detail)*, 2022, digital print on archival paper, 56 x 43 cm
2. Louise Wells, *Colour Palette for the Morning Sky (detail)*, 2022, commercial print on 300gsm satin card, thread, 78 x 356.5 cm
3. Sensory Walk with artist Louise Wells and Anne Williams along the Railway Reserves Heritage Trail, photography by Jess Boyce
4. *Tracing Gondwana* panel discussion, in partnership with Gondwana Link. Speakers include artists Nikki Green, Monika Lukowska, and Reneé Pettitt-Schipp, as well as special guests Basil Schur (Green Skills), Keith Bradby (Gondwana Link), Rocky Eades (Goreng Menang Noongar Cultural Consultant) and Auntie Carol Pettersen (Noongar-Menang Elder)
5. John Eden holding his work, *Accent, 2021*, spray paint, acrylic, wax crayon on board, 49 x 38 cm; work in the foreground, *Sawyers' King, 2021*, spray paint, acrylic, wax crayon on board, 92 x 62 cm
6. Exhibition Opening, *Upper Reach* by Antony Muia, MJAC 2022
7. Environmental Art Project Award Ceremony: City of Swan Mayor Cr David Lucas with prize-winning school students from the City of Swan. Photography by Josh Wells
8. Year 6 student Jasmine Caravelli standing in front of her winning banner, 2022 Environmental Art Project, Mundaring Rose Gardens
9. MJAC event opening. Photography by Barry Williams
10. MJAC West Gallery visitors
11. MJAC maintenance work. Photography by Douglas Ireland
12. MJAC at night. Photography by Barry Williams
13. Anthony Muia, *The Garden (Mimesis 1)*, 2021, ed. 1 of 9, etching, 103.5 x 83 cm
14. MJAC East Gallery, *Antipodean Encounters* exhibition, 2018
15. Indigo Junction Women's Group screen printing techniques workshop
16. Gallery 1 at MAC, *Extricate* exhibition curated by Shanti Gelmi. Photography by Laura Sykes
17. Megan Howe, *I'm Ok*, 2022, gauze, pill packets, wine cooler bladders, appliqué, machine stitched, 88 x 88 cm, *Stitched & Bound* exhibition. Photography by the artist
18. *Transpositional* exhibition opening
19. John Eden, *Barton's Found Object (detail)*, 2021, oil, dirt, bush charcoal on recycled board, recycled frame, 44 x 51.5 cm. Photography by the artist
20. Anne Williams, *Groundcover Series (detail)*, 2021, wool, silk, paper, varied dimensions. Photography by MAC Inc.
21. Opening night, *It's a Matter of How You Look at Things* exhibition by textile artists Anne Williams and Louise Wells
22. Gallery 1 at MAC, *Country Connections* Shire of Mundaring Open Art Acquisition exhibition, curated by Sharyn Egan & André Lipscombe. Photography by MAC Inc.
23. Louise Grimshaw, *The Money Trap (detail)*, cmyk silkscreen printing on 42gsm Kozo paper, pine, spring wire, craft paper, acrylics, MDF. Photography by Laura Sykes
24. Annette Peterson, *Vespa I*, 2022, oil on wood, 40 x 30 cm
25. Hans Arkeveld, c. 1973, mixed media, 57 x 38 x 30 cm. Photography by Churchill Imaging

26. Gallery 2 at MAC, *The Sum of Us* exhibition, Susan Perrett (Kent), *Eucalyptus macaranda*. Photography by Andrew MacKinnon
27. Joan Johnson, *waste can be beautiful*, 2022, hand-cut Perspex, 14 x 100 x 27 cm. Photography by Churchill Imaging
28. *Quiddity* exhibition presented by DADAA, 2022, MJAC. Photography courtesy of MAC Inc.
29. *Made in Midland* exhibition, Leanne Bray, assorted vessels, 2022
30. *Shaping Space | Holding Space* exhibition, Coby McDougall with artworks. Photography by MAC Inc
31. Anthony Muia, *Xanthorrhoea*, 2021-2022, ed. 1 of 6, drypoint on hand coloured paper, 60 x 80 cm
32. *Quiddity* exhibition presented by DADAA, Simon Marchment, *Soapbox 1*, 2022, acrylic on wood, 35.5 x 24 x 12 cm
33. *Drug Aware HyperVision: Time* exhibition, Darcey Katherine Weber, *Leave Nothing but Footprints*, 2022, oil, acrylic on wood. Photography by Andrew MacKinnon
34. *Drug Aware HyperVision: Time* exhibition, Yasmin Khadembashi with her work *Don't Act Suspicious*, acrylic, oil, pearl embellishment on canvas. Photography by Andrew MacKinnon
35. *Drug Aware HyperVision: Time* opening night, MJAC
36. *Stitched & Bound* opening night, MJAC
37. Margery Goodall, *Quairading Banksia*, 2022, cotton, textile ink, machine stitched, 76 x 75 cm. Photography by Andrew MacKinnon
38. *Stitched & Bound* exhibition. Photography by Andrew MacKinnon
39. Nikki Green, *Ana El Na Refa Na La, Please Please Heal Her*, excerpt from *The Weeping Gums of No Tree Hill* by Reneé Pettitt-Schipp, 2022, mixed media drawing on board, 100 x 75 cm. Photography by the artist
40. Nikki Green, *A Window of Time*, 2022, digital print, 56 cm x 76 cm. Photography by the artist
41. Monika Lukowska, *Surface Learning, Touching the Time*, 2022, etched copper plates, 30 x 150 cm. Photography by the artist
42. Marina van Leeuwen, Studio residency at MJAC
43. Jenny Utting, *Sense of Place*. Photography by the artist
44. 927 Rose O'Brien, Yr 5, MEAP winning design
45. 760 Sophie Russell, Yr 4, MEAP winning design
46. Whiskey & Boots, Studio residency at MJAC
47. Anthony Muia, *The Bay*, 2021-2022, etching on hand-coloured paper, 60 x 80 cm. Photography by the artist
48. Luke Morgan, *Give Way - Self Reflection*, 2021, oil on wood panel, 61 x 45.5 x 4 cm. Photography by the artist
48. Marina van Leeuwen, *Wallflower (Chorizema)*, 2021, unique state monoprint, oil and wax on rag paper, 25 x 25 cm. Photography by the artist
49. Rebecca Bowman, Studio residency at MJAC. Photography by Eduardo Cossio, 2021
50. André Lipscombe, Studio residency at MJAC
51. *Stitched & Bound*, Studio residency at MJAC
52. Muriel Hillion-Toulcanon, Studio residency at MJAC
53. MAC Shop Christmas multi-lay. Photography by Kristy Scaddan
54. Muriel Hillion-Toulcanon performance for Swan Open Studio
55. Jess Boyce (MAC Inc. staff, centre left) and Ellen Norrish (City of Swan, centre right) with attendees at the *Tracing Gondwana* opening. Photography by MAC Inc.
56. MAC Inc.'s Acting Director Kate Parker and Board Member Darrell Jones at MJAC
57. SpatialCo (Peter Hill & Leonie Matthews), *Mountain Quarry C* (detail), 2022, digital print on Hahnemühle paper, 84 x 51.5 cm. Photography by the artist

Quotes are taken from MAC Inc. Visitor Book comments; Culture Counts surveys; and social media engagement posts.





7190 Great Eastern Highway Mundaring WA 6073

T: 08 9295 3991 | info@mundaringartscentre.com.au

Open Tue - Fri 10am - 5pm, Sat - Sun 11am - 3pm
Closed Public Holidays

MUNDARINGARTSCENTRE.COM.AU

Midland Junction Arts Centre

MANAGED BY MUNDARING ARTS CENTRE INC | SUPPORTED BY CITY OF SWAN

276 Great Eastern Highway Midland WA 6056

T: 08 9250 8062 | info@midlandjunctionartscentre.com.au

Open Wed - Fri 10am - 5pm, Sat 11am - 3pm
Closed Public Holidays

MIDLANDJUNCTIONARTSCENTRE.COM.AU

