



MAC INC.

MUNDARING ARTS CENTRE AND  
MIDLAND JUNCTION ARTS CENTRE

---

ANNUAL  
REPORT  
2021

---

*We respectfully acknowledge the traditional owners and custodians of the land on which we operate, the Whadjuk people, as well as other first Australians connected with this land. We pay our respects to elders both past and present and their continuing connection to nurturing culture.*

## CONTENTS

<b>EXECUTIVE SUMMARY</b>	<b>1</b>
<b>MISSION STATEMENT</b>	<b>2</b>
<b>SNAPSHOT</b>	<b>3</b>
<b>CHAIRPERSON'S REPORT</b>	<b>5</b>
<b>DIRECTOR'S REPORT</b>	<b>7</b>
<b>TREASURER'S REPORT</b>	<b>9</b>
FINANCE REPORT	11
AUDITOR'S REPORT	13
<b>PUBLIC PROGRAM</b>	<b>17</b>
<b>EXHIBITION PROGRAM</b>	
SUMMARY	25
MUNDARING ARTS CENTRE	27
MIDLAND JUNCTION ARTS CENTRE	33
ARTISTS IN RESIDENCE	41
EXTERNAL EXHIBITIONS	45
<b>THE SHOP</b>	<b>46</b>
<b>COLLECTION MANAGEMENT &amp; PLACE ACTIVATION</b>	<b>47</b>
<b>MIDLAND JUNCTION ARTS CENTRE HIRE</b>	<b>48</b>
<b>OUR PARTNERS</b>	<b>49</b>
<b>OUR TEAM</b>	<b>51</b>

## EXECUTIVE SUMMARY

*We contribute to the cultural life of our region by nurturing creative potential, supporting artists and encouraging people of all ages and backgrounds to engage with the arts.*

A not-for-profit community arts organisation, Mundaring Arts Centre Inc. (MAC Inc.) provides arts leadership, advocacy for West Australian artists and cultural advisory services for individuals and organisations.

We contribute to the cultural life of our region by nurturing creative potential, supporting artists and encouraging people of all ages and backgrounds to engage with the arts.

Founded in 1979, by a group of dedicated artists, MAC Inc. is now a nationally recognised presenting and producing arts organisation. Developing and promoting high quality arts through a range of exhibitions, events, community activities, education and cultural programs.

MAC Inc. actively fosters opportunities to share and celebrate the rich cultural fabric of our community, serving the eastern region of Perth, and beyond, through two cultural hubs, Mundaring Arts Centre and Midland Junction Arts Centre. We acknowledge that we operate on the traditional lands of the Whadjuk people and offer our respect to their elders both past and present.

Mundaring Arts Centre (MAC) is situated in the heart of the creative 'Hills' community of Mundaring, located 34 km east of Perth on the Great Eastern Highway in the Shire of Mundaring. MAC's two galleries are recognised for best practice community arts and excellence in visual arts. The bespoke gallery spaces are complemented by the Shop, a leading outlet for high quality crafts, paintings and prints. Currently representing around 200 Western Australian artists, the Shop highlights the creative talents of the region and invites new visitation.

Midland Junction Arts Centre (MJAC) is situated in the heart of Midland, a major rail and road transit junction, about 18 km north-east of the Perth CBD. It is the regional centre for the City of Swan that includes the Swan Valley and the Darling Scarp to the east, where Mundaring sits. MJAC houses three galleries, ceramics, print and dance studios, multipurpose classrooms, a function room, a 142-seat theatre, artist-in-residence studios, as well as spaces for workshops and meetings.

Over the past 42 years, MAC Inc. has established itself as a well-known arts and cultural organisation with a reputation for excellence in arts, culture and community leadership, delivering quality educational and creative arts experiences in Mundaring and the surrounding region.

## MISSION STATEMENT



**CREATE** A FOCUS FOR ARTS AND CULTURAL DEVELOPMENT WITHIN THE EASTERN REGION



**ENGAGE** PARTICIPANTS, SPECTATORS AND CREATORS IN TRANSFORMATIVE ARTS EXPERIENCES



**STIMULATE** INCREASED CREATIVITY, IMAGINATION, SKILLS AND KNOWLEDGE



**DEVELOP** A SUSTAINABLE, CREATIVE BUSINESS THAT CONTRIBUTES TO THE SOCIAL AND ECONOMIC PROSPERITY OF THE REGION AND ENRICHES THE CULTURAL EXPERIENCE OF THE COMMUNITY



BE **RECOGNISED** FOR BEST PRACTICE COMMUNITY ARTS AND EXCELLENCE IN VISUAL ARTS



## 2021 IN A SNAPSHOT

In 2021 MAC Inc. facilitated exceptional arts experiences that celebrated diversity and inclusivity: developing knowledge, skills and economic benefit.

**31,200**

**VISITORS ACROSS TWO VENUES**

*Excludes public program participants*

**10,900**

**PUBLIC PROGRAM PARTICIPANTS**

*Excludes participants of community venue hire programs (~17,300)*

**11,000**

**VISITORS TO EXTERNAL PRESENTATIONS**

**672**

**WA ARTISTS SUPPORTED**

*Exhibiting or contracted – excludes MAC Inc Shop artists (~200)*

**OVER \$1.2 MILLION**

**INVESTED IN THE ARTS COMMUNITY**

## ARTS DEVELOPMENT AND PLACE ACTIVATION

*Create, engage, stimulate and develop*

MAC Inc. delivered quality exhibitions, events and educational experiences engendering arts and cultural development.

**493**

**WORKSHOPS (21 ONLINE)**

**80**

**ARTS EDUCATION INITIATIVES**

**19**

**EXHIBITIONS**

**20**

**RESIDENCIES**

**30**

**PERFORMANCES**

**6**

**COMMUNITY PROJECTS**

## LEADERSHIP AND ADVOCACY

*Celebrate, connect, build and nurture*

MAC Inc. collaborated with partners to create vibrant arts and culture offerings, enriching cultural tourism, connecting places, organisations and individuals.

**39**

**PARTNERSHIPS WITH EDUCATION INSTITUTIONS**

**85**

**PARTNERSHIPS**

**35**

**PROFESSIONAL DEVELOPMENT SESSIONS (7 ONLINE)**

**866**

**COMMUNITY VENUE BOOKINGS**

**~\$360,000**

**INCOME FOR ARTISTS (26% INCREASE FROM 2020)**

# CHAIRPERSON'S REPORT

## JENNY KERR

It has been an honour and an enriching experience to be Chair of MAC Inc. over the last four years. 2021 was yet another significant period of achievement across the region for this dynamic and independent organisation with the delivery of ambitious programming across two venues amidst the ongoing challenges of the COVID-19 pandemic.

On behalf of my Board colleges, I would like to acknowledge our incredible staff, artists, volunteers, audiences and local community that make our venues genuinely unique, safe and fun places to experience arts and culture.

MAC Inc's diverse programming attracted over 40,000 people to our venues via our flagship Exhibition, Artist in Residence and Creative Workshop programs. The strength and quality of presentation continue to positively impact arts and cultural exchange, learning, and connection in Perth's Hills and the Eastern Metropolitan region. We continue to foster generations of contemporary arts practitioners, growing audiences and providing outstanding returns on investment.

Program highlights included the *Food for Thought* community Festival and the *Indian Ocean Craft Triennial*. We presented the works of Nalda Searles, Tineke van der Eecken and the delightfully successful exhibitions *Toy Stories* and *HOLD*. Exceptional artist residencies, including Whiskey and Boots performing *Mama Stitch* and local playwright Suzanne Ingelbrecht with *2 Mary's*, have set the scene to establish MJAC as a premier venue for the development of new work.

All this is made possible with the valued support from the Shire of Mundaring and the City of Swan. I thank our Members and Life Members whose presence keeps our legacy and stories alive. Thank you to those who have generously supported MAC Inc. via donations.

Thank you to the Board for their commitment to guiding our vision and values. We welcomed Bree Fomenko and Kate Parker during the year. With profound gratitude, farewell to Amanda Alderson, André Lipscombe, Yvonne Tessensohn and Annalisa Oxenburgh.

Our staff have been resilient and diligent; their hard work during a challenging environment has provided numerous opportunities for artists and audiences to connect and grow.

I look forward to 2022, a year of strategic renewal and consolidation for MAC Inc.



# DIRECTOR'S REPORT

## JENNY HAYNES

2021 saw WA arts organisations coming together in an unprecedented wealth of exciting new presentations as we all faced a destabilised environment and an increased appetite for connection and moments of joy.

Midland Junction Arts Centre (MJAC) launched with a newly renovated auditorium space, ready to host a series of FRINGE and Perth Festival performances, the Maker and Smith Film Festival and numerous exceptional theatre productions.

We were captivated by Phil Walleystack's live performance and the exquisite examples of First Nation's arts practice from across WA, presented as part of the *Yoowalkoorl* exhibition in partnership with Aboriginal Arts Centre Hub of Western Australia.

The *Food for Thought* community project, delivered over 6 months across the Shire of Mundaring, brought artists and the community together to rediscover their food stories, local food treasures and new making techniques. The project even included a 'Great Bake Off' with the Country Women's Association and 19 community groups and local businesses partnering to share their skills.

MAC Inc. was proud to partner with the *Indian Ocean Craft Triennial* team, providing administration, marketing and auspicing support to deliver the inaugural festival, as well as four exceptional curated exhibitions across our two venues. We were spoilt with an abundance of talent and generosity as the important stories of these artist's journeys and their chosen contemporary craft practices became the central focus of the annual program.

Visual and performing arts workshops, artists working in residence and partnerships with the City of Swan to deliver free youth arts activities at events, engaged over 10,000 participants, despite COVID-19 restrictions and uncertainty.

Access and inclusion programs ran throughout the year, including over 55's dance programs at MJAC and outreach at five senior support centres. MAC Inc. worked in partnership with DADAA to present development residencies; an exhibition of tactile artforms from DADAA's Midland Hub; vision awareness training and tactile tours.

The diverse range of techniques and approaches presented by leading and emerging contemporary artists showcased how they transform, dissect, and enrich our world.

The quality creative offerings were delivered against a backdrop of ongoing

COVID-19 safety requirements, reductions in income and staff changes. MAC Inc. sadly bid farewell to Curator Melissa McGrath and Education Program Manager Ellen Norrish, while Kelsey Douglas changed roles and states, moving to Melbourne. We welcomed Shannon Baggott, Liz Knuckey, Shannon Pearce and Sophie Hick to the team and transitioned our administration to the Cloud in an attempt to future proof new challenges.

Updates to infrastructure continued throughout the year to improve the professional presentation of services. MAC Inc. enlisted the minds of a voluntary group of planners, artists and architects to ignite a vision for a revitalised Mundaring Town Centre in partnership with the Shire of Mundaring, to address the limits of the current venue and cultural infrastructure.

When I reflect on the complexity and scope of what MAC Inc. offers, I am consistently proud of how our staff and networks work together to build community and cultural health, providing a platform for investigation and delight. 2022 brings with it new challenges to ensure organisational stability and resilience and I extend my sincere gratitude to the Shire of Mundaring and City of Swan for their continued support.

Organisations such MAC Inc. would not exist without the commitment and energy of the many hundreds of people who devote their time, enthusiasm and skills. Thank you to each and every one of you who contribute to MAC Inc. and the overall wellbeing and richness of our society.



## TREASURER'S REPORT

### DR MARILYN CLARK-MURPHY

This year, thankfully, has been a little more settled than the last. Although our finances and operations remain 'COVID affected' we have avoided too many restrictions on normal trading. Unfortunately, as I write this, it seems inevitable that the next few months will be difficult ones as WA rides the 'COVID wave'. We are also in negotiations with major funders so, as seems to have become the norm, we are operating against a background of uncertainties.

Having said that, I could not be more grateful for the incredible work of Jenny Haynes and Narelle Doran. They continue to provide, excellent support to the Board of MAC Inc., to all our staff and to me during these challenging times.

As an illustration of this, I am very pleased to report that MAC Inc.'s final-result for the year is a deficit, after depreciation and capital works of \$83,197. This is within \$1,000 of our budgeted figure. There are obviously some positives and negatives contributing to that result and those to which I would draw attention are:

#### INCOME

Total income is approximately \$200,000 over budget, this is spread across all our revenue streams but includes a better-than-expected result for project funding.

#### EXPENDITURE

In last year's report I explained that MAC Inc. would have significant depreciation expense in the coming years as equipment and improvements made in 2020/21 are written off. The depreciation expense of this year is \$29,220. A further \$11,190 has been spent on building improvements. The employees' benefits expense is over budget, but this is primarily a result of giving staff extra shifts to service workshops and exhibitions.

#### FORWARD PLANNING

The Board has agreed to make one significant change to our budget planning from 2022 onward. We recognise that grant funding is, and always will be, a significant portion of our income. It is also unpredictable; at the start of the year, we cannot know with any certainty what we will be able to apply for or which applications will be successful. We believe that it is important to accommodate this in our budgeting

process. So, while budgets are commonly fixed once passed by the Board, from this year on, our budget will be varied to acknowledge the impact of grant income. This means that, when we successfully apply for a grant, the income will be recognised in the budget and expenditure on funded items adjusted accordingly. From 2023 on, a statement of anticipated grant applications will accompany the budget submitted to the Board for approval.

In closing I would like to thank the Shire of Mundaring and City of Swan for their continued support of MAC Inc. I also thank our auditors Walker Wayland Audit (WA) Pty. Ltd. who contribute a significant proportion of their services pro-bono.

A summary of MAC Inc's accounts are provided in the following pages, together with the Auditor's Report.



# FINANCE REPORT

## Mundaring Arts Centre Inc

Full audit report and financial statements available upon request

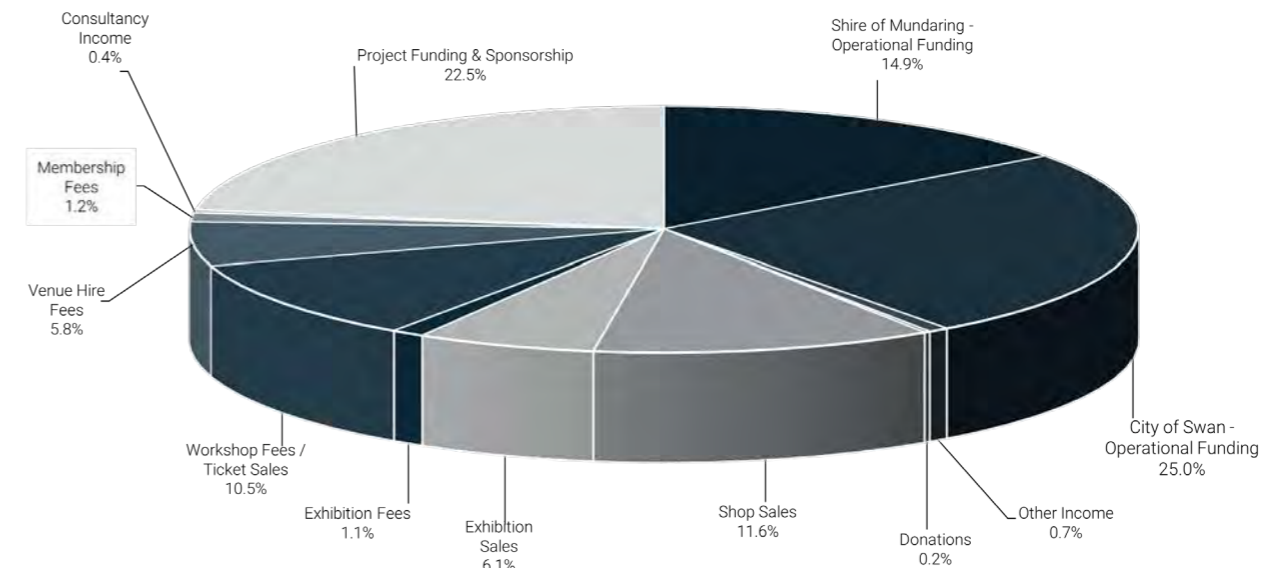
### Income & Expenditure Statement 2021

INCOME	2021	2020	variation
Operational Funding - Shire of Mundaring	\$164,852	\$163,157	1%
Operational Funding - City of Swan	\$277,000	\$277,000	0%
Project Funding & Sponsorship	\$249,658	\$58,011	330%
Sales & Service	\$410,881	\$442,894	-7%
Building & Equipment Funding	\$0	\$40,000	
Administration	\$6,132	\$16,585	-63%
Covid-19 Stimulus Payments	\$0	\$275,500	
<b>TOTAL INCOME</b>	<b>\$1,108,523</b>	<b>\$1,273,147</b>	<b>-13%</b>
EXPENDITURE			variation
Payments to Artists	\$359,328.85	\$277,497	29%
Exhibition & Project Expenses	\$130,094.58	\$62,548	108%
Consultancy Expenses	\$1,532.70	\$1,842	-17%
Building & Equipment Upgrades	\$11,537.90	\$19,589	-41%
Depreciation Expense	\$29,220.00	\$12,725	130%
Administration Expenses	\$660,005.75	\$726,277	-9%
<b>TOTAL EXPENDITURE</b>	<b>\$1,191,720</b>	<b>\$1,100,478</b>	<b>8%</b>
<b>NET SURPLUS / DEFICIT</b>	<b>-\$83,197</b>	<b>\$172,669</b>	<b>-148%</b>

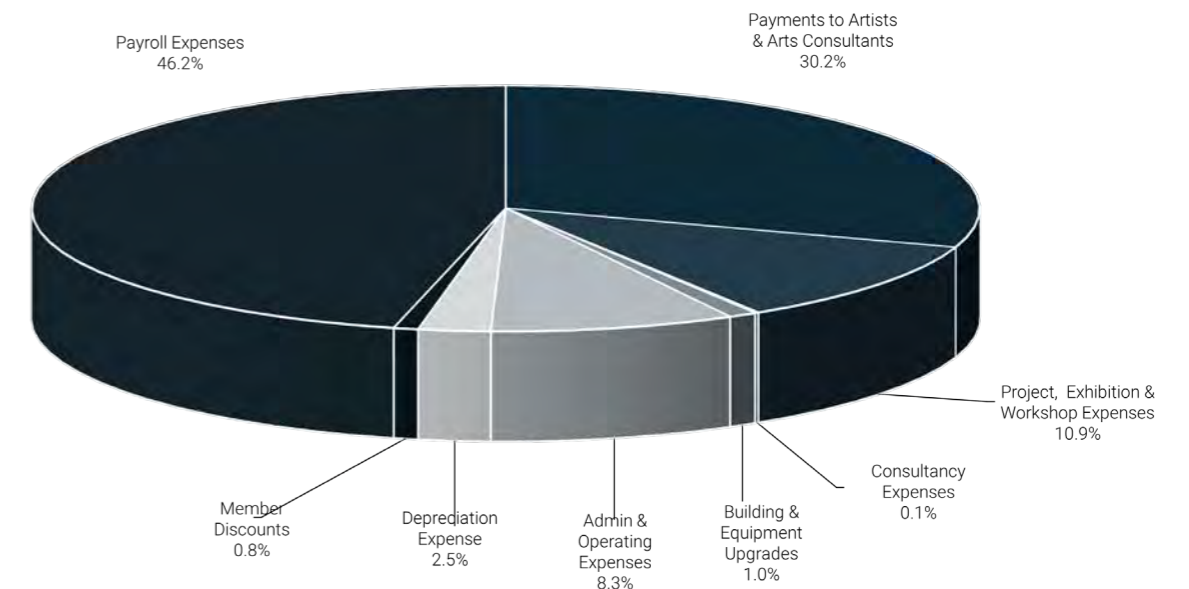
### Statement of Assets & Liabilities

ASSETS	31 Dec 2021	31 Dec 2020	variation
Cash & Cash Equivalents	\$519,258	\$555,362	-7%
Accounts Receivable	\$9,568	\$14,707	-35%
Pre-paid Insurances & Expenses	\$11,387	\$9,425	21%
Stock on Hand	\$5,087	\$4,721	8%
Furniture & Equipment	\$73,185	\$95,792	-24%
Right of Use Assets (premises)	\$1,924	\$231	733%
<b>TOTAL ASSETS</b>	<b>\$620,409</b>	<b>\$680,237</b>	<b>-9%</b>
LIABILITIES			
Accounts Payable & Accrued Expenses	\$79,885	\$73,275	9%
Payments Received In Advance	\$12,676	\$11,136	14%
Gift Vouchers to be redeemed / Bonds to be refunded	\$13,068	\$9,300	41%
Provision for Payroll Expenses	\$151,176	\$160,558	-6%
Project Grant Funding Received in Advance	\$169,486	\$159,276	6%
Public Fund Donations held in trust	\$32,236	\$23,558	37%
Right of Use Liability (premises)	\$1,924	\$231	733%
<b>TOTAL LIABILITIES</b>	<b>\$460,451</b>	<b>\$437,333</b>	<b>5%</b>
<b>NET ASSETS</b>	<b>\$159,958</b>	<b>\$242,905</b>	<b>-34%</b>
EQUITY	31 Dec 2021	31 Dec 2020	variation
Retained Earnings / Capital Reserve	\$243,155	\$70,486	245%
Net Operating Surplus / (Deficit)	-\$83,197	\$172,669	-148%
<b>TOTAL EQUITY</b>	<b>\$159,958</b>	<b>\$243,155</b>	<b>-34%</b>

### MUNDARING ARTS CENTRE INC. INCOME 2021



### MUNDARING ARTS CENTRE INC. EXPENDITURE 2021





## Independent Auditor's Report To the Members of Mundaring Arts Centre Inc.

### Opinion

We have audited the financial report of Mundaring Arts Centre Inc ("the Association") which comprises the statement of financial position as at 31 December 2021, the statement of comprehensive income, the statement of changes in equity and the statement of cash flows for the year then ended, and notes to the financial statements, including a summary of significant accounting policies, and the statement by the Committee Members.

In our opinion, the accompanying financial report of the Association is in accordance with Division 60 of the *Australian Charities and Not-for-profits Commission Act 2012*, including:

- a) giving a true and fair view of the Association's financial position as at 31 December 2021 and of its financial performance and cash flows for the year then ended; and
- b) complying with Australian Accounting Standards and Division 60 of the *Australian Charities and Not-for-profits Commission Regulation 2013*.

### Basis for Opinion

We conducted our audit in accordance with Australian Auditing Standards. Our responsibilities under those standards are further described in the *Auditor's Responsibilities for the Audit of the Financial Report* section of our report. We are independent of the Association in accordance with the auditor independence requirements of the Accounting Professional and Ethical Standards Board's APES 110 *Code of Ethics for Professional Accountants* ("the Code") that are relevant to our audit of the financial report in Australia. We have also fulfilled our other ethical responsibilities in accordance with the Code.

We confirm that the independence declaration required by Division 60 of the *Australian Charities and Not-for-profits Commission Act 2012*, which has been given to the Committee Members, would be in the same terms if given as at the time of this auditor's report.

We believe that the audit evidence we have obtained is sufficient and appropriate to provide a basis for our opinion.

### Information Other than the Financial Report and Auditor's Report Thereon

The Committee Members are responsible for the other information. The other information comprises the information included in the annual report for the year ended 31 December 2021 but does not include the financial report and our auditor's report thereon.

Our opinion on the financial report does not cover the other information and accordingly we do not express any form of assurance conclusion thereon.

In connection with our audit of the financial report, our responsibility is to read the other information and, in doing so, consider whether the other information is materially inconsistent with the financial report or our knowledge obtained in the audit or otherwise appears to be materially misstated.

If, based on the work we have performed, we conclude that there is a material misstatement of this other information, we are required to report that fact. We have nothing to report in this regard.

### Responsibilities of Management and the Committee Members for the Financial Report

The Committee Members of the registered Association are responsible for the preparation of the financial report that gives a true and fair view in accordance with the Australian Accounting Standards and the *Australian Charities and Not-for-profits Commission Act 2012* and for such internal control as management determines is necessary to enable the preparation of the financial report that is free from material misstatement, whether due to fraud or error.

In preparing the financial report, management is responsible for assessing the Association's ability to continue as a going concern, disclosing, as applicable, matters related to going concern and using the going concern basis of accounting unless management either intend to liquidate the Association or to cease operations, or have no realistic alternative but to do so.

The Committee Members are responsible for overseeing the Association's financial reporting process.

### Auditor's Responsibilities for the Audit of the Financial Report

Our objectives are to obtain reasonable assurance about whether the financial report as a whole is free from material misstatement, whether due to fraud or error, and to issue an auditor's report that includes our opinion. Reasonable assurance is a high level of assurance but is not a guarantee that an audit conducted in accordance with Australian Auditing Standards will always detect a material misstatement when it exists. Misstatements can arise from fraud or error and are considered material if, individually or in the aggregate, they could reasonably be expected to influence the economic decisions of users taken on the basis of this financial report.

As part of an audit in accordance with the Australian Auditing Standards, we exercise professional judgement and maintain professional scepticism throughout the audit. We also:

- Identify and assess the risks of material misstatement of the financial report, whether due to fraud or error, design and perform audit procedures responsive to those risks, and obtain audit evidence that is sufficient and appropriate to provide a basis for our opinion. The risk of not detecting a material misstatement resulting from fraud is higher than for one resulting from error, as fraud may involve collusion, forgery, intentional omissions, misrepresentations, or the override of internal control.
- Obtain an understanding of internal control relevant to the audit in order to design audit procedures that are appropriate in the circumstances, but not for the purpose of expressing an opinion on the effectiveness of the Association's internal control.
- Evaluate the appropriateness of accounting policies used and the reasonableness of accounting estimates and related disclosures made by the management.
- Conclude on the appropriateness of the management's use of the going concern basis of accounting and, based on the audit evidence obtained, whether a material uncertainty exists related to events or conditions that may cast significant doubt on the Association's ability to continue as a going concern. If we conclude that a material uncertainty exists, we are required to draw attention in our auditor's report to the related disclosures in the financial report or, if such disclosures are inadequate, to modify our opinion. Our conclusions are based on the audit evidence obtained up to the date of our auditor's report. However, future events or conditions may cause the Association to cease to continue as a going concern.
- Evaluate the overall presentation, structure and content of the financial report, including the disclosures, and whether the financial report represents the underlying transactions and events in a manner that achieves fair presentation.

We communicate with Committee Members regarding, among other matters, the planned scope and timing of the audit and significant audit findings, including any significant deficiencies in internal control that we identify during our audit.

We also provide the Committee Members with a statement that we have complied with relevant ethical requirements regarding independence, and to communicate with them all relationships and other matters that may reasonably be thought to bear on our independence, and where applicable, related safeguards.

*Walker Wayland Audit (WA) Pty Ltd*

WALKER WAYLAND AUDIT (WA) PTY LTD

*Richard J Gregson*

**Richard Gregson CA**  
Director  
Level 3, 1 Preston Street, COMO WA 6152

Dated this 2nd day of May 2022.



## PUBLIC PROGRAMS

EDUCATION PROGRAM  
MANAGER

**JESS BOYCE**

Community engagement in the arts is facilitated by MAC Inc. across two venues, online and off-site, including artist-led workshops, excursions, forums, festivals, and custom events. These creative learning programs and professional development opportunities for artists are programmed to complement the many themes, mediums and artists represented in the annual Exhibition and Artist in Residence Program.

As well as regular workshops in painting, drawing, ceramics, print, fibre, sculpture, jewellery and dance, a number of exciting and unique techniques were offered including:

*Itajime and Ori Nui Shibori* with Vicki Ames; *Suminagashi Paper Marbling*; *Orizome Paper Dyeing* and *Riso Print Gocco* with Ingrid Mulder; *Intro to Sign Painting* with Luke O'Donohoe; *Wood Lithography* with Monika Lukowska; *Spoon Carving* with Andrew Christie; *Coiling with Foraged Fibres* with Fiona Gavino; *Tall Felted Vessels* with Martien Van Zuilen and *Working with Wire* with Tania Spencer.

In addition to school holiday programs, term classes for children in ceramics, textiles and drawing were held throughout the year with After School Art Club with Kaitlyn Elsegood.

A series of professional development webinars on photography, writing, finance, and social media for artists were held online. Vision Awareness Training and Tactile Tours were also held in collaboration with DADAA to upskill arts and cultural workers and introduce visitors with disability to new ways of experiencing and enjoying visual arts through informed discussion, description and touch.

With the support of St John of God Midland Private Hospital, Seated Dance classes for people of all ages and capabilities were held at MJAC in terms 2 – 4. A number of outreach sessions were also held at local support centres - Guildford Village; Midland and Yallambee Nursing Homes; Parkinsons Support Group Midland and Baptise Care Midland.

## FESTIVAL SEASON

2021 was the first year MAC Inc. participated in FRINGE WORLD and Perth Festival, hosting a number of performances at Midland Junction Arts Centre (MJAC). Three sold out sessions of Cameron McLaren's locally focused comedy show *6056* and *An Evening with Phil Walley-Stack* were a spectacular start to our debut FRINGE WORLD season, before an unfortunately timed lockdown cancelled the last few shows.

Perth Festival brought Whiskey & Boots to the arts centre to present their unique verbatim and live music show *Mama Stitch*, bringing to life stories of local mums. Continuing the relationship with the group of artists fostered during this time, Whiskey & Boots are back in 2022 with a new production *The Quadrangle*.

Stalls and activities were also presented at range of festivals and large-scale events throughout the year including *Hyperfest*, *Avon Descent*, *LoCale Art in the Park*, *Carnegie Social*, *Makerspace*, *Twilight Markets*, *Connecting Community Expo* and *Kambarang Festival*.



13



14



15

## MAALI DEADLY YORGA'S ART GROUP

Indigo Junction's Maali Deadly Yorga's Art Group continued to take part in a series of art workshops (screen printing, resin pouring and wire sculpture) at MJAC throughout 2021. Noongar Balladong woman, Joanne Parfitt (Bungaana) was selected to present an activity as part of Midland NAIDOC, an exhibition of her artworks at Midland Town Hall's historic Talkie Tearooms and deliver private art workshops as a result of these sessions.

1,400+

ENTRIES

23

PARTICIPATING SCHOOLS

Anne Hamersley, Aveley, Bakers Hill, Caversham Valley, Chidlow, Glen Forrest, Gidgegannup, Guildford, Helena College, Helena River Steiner School, Helena Valley, Malvern Springs, Moorditj Noongar Community College, Mount Helena, Mundaring, Parkerville, Pickering Brook, Richmond, Sawyers Valley, Sacred Heart, Silver Tree Steiner, Swan View, and Treetops Montessori

26

WINNING DESIGNS

Transformed into street banners for display in Mundaring, Midland, Guildford and Gidgegannup

27

HIGHLY COMMENDED, PEOPLE'S CHOICE AND ACT BELONG COMMIT AWARDS

SUPPORTED BY

Healthway Act Belong Commit, Shire of Mundaring, City of Swan, Eastern Metropolitan Regional Council

## ENVIRONMENTAL ART PROJECT

Now in its 20th year, this annual youth project presented by MAC Inc. provides opportunities for primary school children to creatively engage with local and global environmental issues. Students develop their own solutions, messages and artwork inspired by their research on the year's theme. All entries are exhibited, with a selection of winning artworks transformed into public outcomes such as large-scale street banners.

First presented in 2001 for schools in the Shire of Mundaring, the project has expanded to engage students across the Perth Hills, and more recently, the City of Swan as MAC Inc. commenced management of Midland Junction Arts Centre in 2017.

2020 saw a digital transition due to COVID-19. School incursions were replaced by free online video tutorials and a virtual exhibition of the entries replaced the presentations at the arts centres. This pivot saw an uptake in independent entries and increased access to educational material.

2021's *Act Belong Commit - Caring for Country* theme focused on First Nations culture, in particular, the land practices of the Whadjuk people of Noongar Boodja. Students investigated how First Nations practices of sustainability can address some of today's largest environmental concerns such as climate change, bushfires and drought.

Three video tutorials and an education resource pack were developed with Noongar artist and educator, Carol Foley. Whadjuk artist, Julianne Wade visited Chidlow, Mundaring and Caversham Valley primary schools and Helena River Steiner School sharing her art and stories to provide students with inspiration for their own works.



16



17



18



19



20



21

“

To help us all thrive on this land, we must learn from those who know it best

— K Walley

“

Mia is still beaming from the award ceremony - this has really increased her confidence.

— M Roe

I'm lucky as I get to see my daughter's artwork every day from the train as I work in the city. The Award Day was lovely and well organised... so well done to everyone on the effort... much appreciated!

— S Timms

2,360  
EXHIBITION VISITORS

2,200+  
PARTICIPANTS

88  
ACTIVITIES

7  
VENUES

2  
OPEN DAYS

FEATURING

12 COMMUNITY GROUPS

7 LOCAL FOOD  
BUSINESSES

7  
ARTISTS IN RESIDENCE

Josephine Clarke, Neil Turner,  
Bernard Kerr, Kate Campbell-Pope,  
Todd Israel, Nalda Searles and  
Leanne Bray

1  
DIGITAL MENTORSHIP  
Kody Bacon and Steven Aylian

## FOOD FOR THOUGHT

*Food for Thought* was a six-month collaborative community project that welcomed members of the Shire of Mundaring to come together to share food, skills and conversations about food culture through art. The project, initiated by the Shire of Mundaring and Mundaring Arts Centre Inc, brought together cultural groups in the region to engage participants through over eighty workshops and events. Renowned Western Australian artists shared their skills and knowledge, culminating in two multi-artform exhibitions, a film and a “cookbook”, showcasing the works of participants, artists-in-residence and, more than anything, the joy of collective creation. Artisans shared their stories, culinary delights and knowledge of food traditions throughout the project delivering memorable talks, tastings and demonstrations (bush tucker experiences, slow food, local food businesses, and traditional tea ceremonies) that taught participants to slow the mind and savour the delight. A broad segment of the community, from children to seniors investigated the theme, creating poetry, short stories, ceramics, wood craft and fibre vessels. A selection was exhibited at Mundaring Arts Centre celebrating the project, our relationship with food and its influence in our lives and community.



22



23



24



25



26

“

*I loved meeting new artists, learning about people and groups in my community, their backgrounds and stories around food.*

*This creates meaningful and productive connections between people in the community, I hope future projects can be supported along the same model*

### SUPPORTED BY

Department of Local Government and Cultural Industries Outer Metro Arts Grant

### PROJECT PARTNERS

Shire of Mundaring; Mundaring Arts Centre Inc.; Mundaring Adult Creative & Learning Centre, and Katharine Susannah Prichard Writers' Centre and the following individuals and organisations: Bongers Bees; Carol Natalotto; Chung Wah Lion Dance Troupe; Cumin Cook; Elements Chocolate; Heather Davis; Little Design Farm; Ceramists - Garry and Jan Zeck, Liz Berry, Greg Crowe, Lee Woodcock, Mel Statham, Kerramic Studio – Jenny Kerr, Bernard Kerr and Robert Kerr and White Peacock Studio Deanne Parker; Maalinup Aboriginal Gallery Dale Tilbrook; Mary Ann Dawson; Moorditj Noongar Community College; Mundaring Men's Shed; Mundaring and Mount Helena Country Women's Association; Rotary Club of Mundaring; Short Street Kitchen; Slow Food Convivium; Swan View Senior High School and Swan View Youth Centre.



27

## INDIAN OCEAN CRAFT TRIENNIAL

The *Indian Ocean Craft Triennial* saw a bumper public program for our four festival exhibitions with an exciting range of fibre art workshop during *HOLD* and *Finders Keepers*, including workshops with Nalda Searles and her long-time collaborators Annette Nykiel, Kate Campbell-Pope, Sharyn Egan and a panel discussion on Fibre Art in Western Australia. Tineke Van der Eecken held a series of talks and two workshops on wire sculpture and jewellery during her solo exhibitions *Tributaries*. *Toy Stories* which open in late 2021 continued into 2022 with a range of public program events held in the new year.



28



29



31



32



33



34

## ROTARY CHRISTMAS TREE

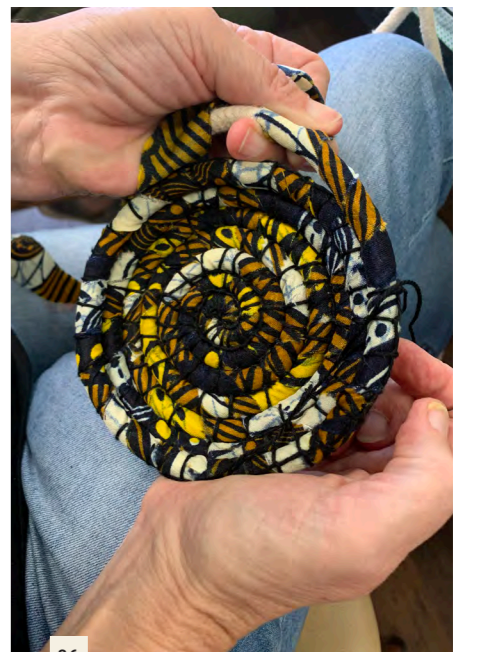
Students from Helena College Junior School worked with local artists Mary Ann Dawson and Tami Esancy to create individual tree leaves from recycled vinyl for the Shire of Mundaring's Christmas Tree. The huge structure was installed on Great Eastern Highway outside the Mundaring Shire's Administration Offices, with assistance from volunteers from MAC Inc. and Mundaring Rotary for passers-by to enjoy.



30



35



36

## EXHIBITION SUMMARY

MAC Inc. presented nineteen exhibitions and twenty residencies in 2021. Four exhibitions and two residencies postponed in 2020 were delivered in addition to the scheduled presentations.

Visitation confidence fluctuated with the COVID-19 attendance restrictions and lockdowns (30 Jan – 10 Feb, 24-27 April and 29 June to 4 July). 24,414 people visited the exhibitions and artists working in residence, a 5% decrease on the previous year.

Income for exhibiting artists also saw a decrease, the 2021 exhibition sales income of ~\$68,000 was 47.7% less than 2020. Financial support for West Australian artists was buoyed through the extensive public program held in conjunction with exhibition presentations.

The *Food for Thought* Project and the four exhibitions presented by MAC Inc. as part of the first *Indian Ocean Craft Triennial* engaged over 12,160 people. Highlighting the work of West Australian artists renowned for their craft practice and the importance of community engagement in the investigation of tradition techniques, stories and contemporary making.

All exhibitions were open free to the public and accompanied by floor sheets, educational material and complementary public programs.

19

EXHIBITIONS

8 MAC  
10 MJAC  
1 EXTERNAL

20

RESIDENCIES

317

ARTISTS  
EXHIBITED





38

## EXHIBITION PROGRAM

MUNDARING ARTS CENTRE

30 JAN - 21 MAR 2021

### TRACES - VICKI AMES

GALLERY 1

Using intricate textiles to explore the visual language of urban architectural facades, Ames' solo exhibition highlighted the ageing surface qualities of buildings and the histories they reveal.

### TEND/ER - SNART CLUB

GALLERY 2

*Tend/er* was an interactive exhibition and residency to invite dialogue and reflection on the way care is practiced in our communities. Physical and online components were woven together in an immersive experience.

*Snart Club*, formed by Anastasia Beasley and Zoë Sydney, invites young people to investigate art and science, creating fun and outrageous opportunities for people to learn and express themselves.

963

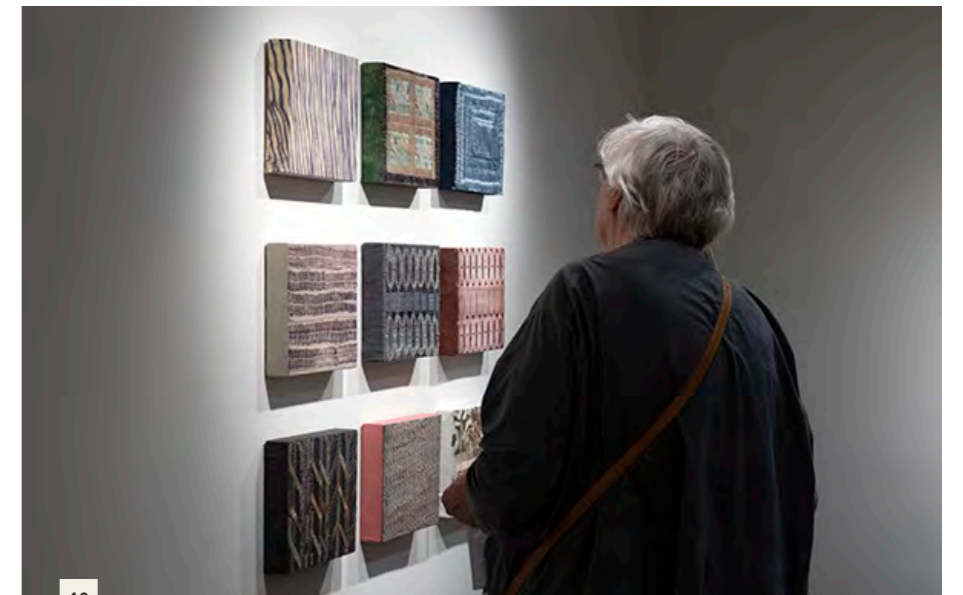
VISITORS

SUPPORTED BY

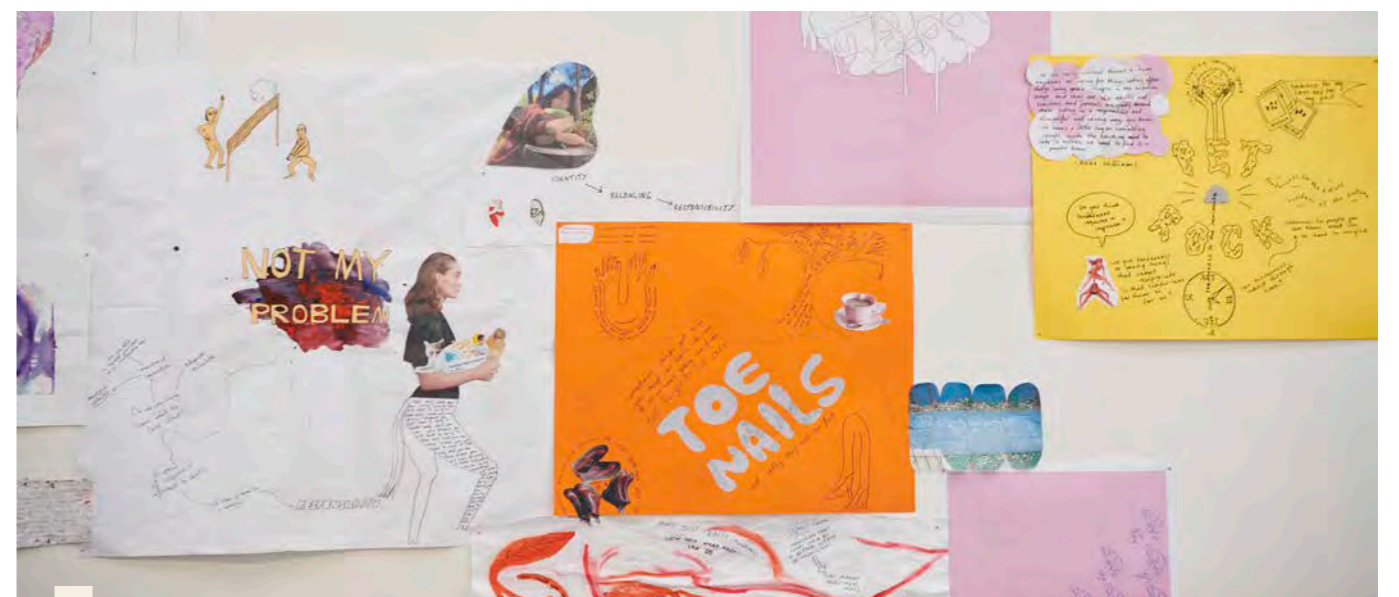
Shire of Mundaring



39



40



41



1,079

VISITORS

6

ARTISTS FEATURED IN  
SAFE KEEPING

4

ARTISTS FEATURED IN  
FOOD FOR THOUGHT

SUPPORTED BY

Shire of Mundaring

27 MAR - 30 MAY 2021

## SAFE KEEPING

### SHIRE OF MUNDARING ART COLLECTION ACQUISITION EXHIBITION

GALLERY 1

Curated by Melissa McGrath

Charting local histories, relationships and landscapes, *Safe Keeping* presented six artist's responses to the recent forced global retreat from public spaces and the importance of community networks.

Through this annual exhibition, the Shire of Mundaring showcases significant artists from the region and acquires new works of relevance and distinction into the local government Art Collection.

Invited Artists: Amanda Alderson, Ric Burkitt, Iain Dean, Bethamy Linton, Philippa O'Brien and Sarah Thornton Smith

Acquisitions: *Language of the Land 1*, 2021 digital print - Philippa O'Brien, *sheild: protect*, 2019-2021 brass, titanium and mixed media - Amanda Alderson, *60 Degrees Inside*, 2020 gouache on paper - Sarah Thornton-Smith, *Western Whip Bird (icon)*, from the *Rare and Vanishing Australian Birds series*, 2018 fine metals, gemstones and giclee print - Bethamy Linton

## FOOD FOR THOUGHT | ARTISTS IN FOCUS

GALLERY 2

*Food for Thought* artists worked in residence, creating new work, and sharing their skills through a series of appetising workshops. A selection of 28 ceramic and textile vessels were presented to launch the project and invite participation.

Artists Featured: Bernard Kerr, Leanne Bray, Kate Campbell-Pope and Jenny Kerr



5 JUN - 1 AUG 2021

## URBAN - MICHELLE CAMPBELL

GALLERY 1

A response to the conflict between development and community wellbeing, Campbell's solo exhibition investigated the psychological impact of the changing urban landscape. Presenting 16 largescale paintings in an artificial grass installation, Campbell explored personal connections to homes and suburbs as extensions to a sense of self.

## FOOD FOR THOUGHT

GALLERY 2

Showcasing the creative work of invited artists and the local community who participated in the collaborative *Food for Thought* partnership project. 92 artforms, a film and a 'cookbook' (with 32 written works and project imagery), presented a tangible expression of our relationship with food and its ability to connect and transform.



965

VISITORS

64

ARTISTS FEATURED IN  
FOOD FOR THOUGHT

SUPPORTED BY

Department of Local Government  
Sport and Cultural Industries and  
Shire of Mundaring



47



48

14 AUG - 31 OCT 2021

PART OF IOTA21: INDIAN OCEAN CRAFT TRIENNIAL, SUPPORTED BY LOTTERYWEST

## FINDERS KEEPERS - NALDA SEARLES

GALLERY 1 & 2

Curated by Sandra Murray

This survey, presented as part of the *Indian Ocean Craft Triennial*, illustrated Searles unique contribution to art and sculptural practice in Australia. A crucial figure in the development of contemporary fibre sculpture for over four decades, Searles shared her extraordinary approach to craft and her connection to the land and its people. 51 new and historical works, created from Australian plant fibre and found objects were presented.

“

*It was a privilege to offer a rare window into the world of one of WA's most significant artists through this pivotal exhibition and introduce her work to both established and new audiences.*

— S Murray

*I feel grateful to have seen the Kangaroo Couple up close. You are weaving the threads of the life I have just started to pay attention to.*

— S August

2,565

VISITORS

467

PUBLIC PROGRAM PARTICIPANTS

SUPPORTED BY

Department of Local Government Sport and Cultural Industries, Indian Ocean Craft Triennial, Lotterywest and Shire of Mundaring

Key works were loaned from public and private collections throughout Australia, including the State Art Collection, Art Gallery of Western Australia; Ararat Gallery TAMA; Curtin University Art Collection; Kerry Stokes Collection; Wollongong Art Gallery, Museum and Art Gallery of the Northern Territory Collection; Edith Cowan University Art Collection; Jude van der Merwe, Kerry Fletcher; Christina McGuinness and Anne M Brody's Collections.

1,993

VISITORS

35

ARTISTS FEATURED IN MAC INC MEMBERS SHOW

SUPPORTED BY

Department of Local Government Sport and Cultural Industries, Indian Ocean Craft Triennial, Lotterywest, Department of Morphology, Ghent University and Shire of Mundaring

6 NOV- 19 DEC 2021

PART OF IOTA21: INDIAN OCEAN CRAFT TRIENNIAL, SUPPORTED BY LOTTERYWEST

## TRIBUTARIES - TINEKE VAN DER EECKEN

GALLERY 1

A new body of 60 works by multidisciplinary artist Tineke Van der Eecken explored the fibres of flora, fauna and human systems. Jewellery, fine metal sculptures and biological objects formed by corrosion casting were presented alongside arresting photographic images that represent the life and death thrum of fragile arterial systems: root, river, skeleton, and vein.

“

*A wonderful addition to the quality and breadth of the programming both at Mundaring and throughout the IOTA festival. Exhibitions like hers demonstrated the depth of skills and imagination and the ambition of Western Australian artists to create exceptional works.”*

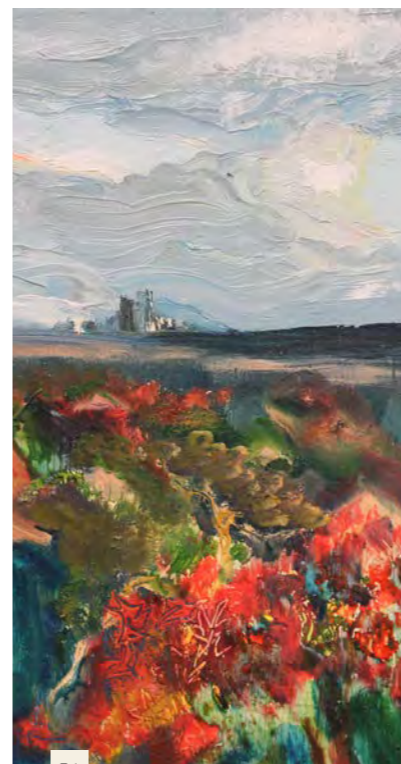
— J van der Merwe



49



50



51

## THE SECOND-BEST TIME IS NOW - MAC INC. MEMBERS SHOW

GALLERY 2

“The best time to plant a tree is 20 years ago, but the second-best time is now”. This old proverb was the catalyst to invite MAC Inc. members to reflect on their relationship to caring for and cultivating the natural environment for this juried exhibition. 45 works in a range of media were presented.

Artists Featured: Amanda Alderson, André Lipscombe, Ant Muia, Amelia Sonnekus, Anne Williams, Bernard Kerr, Britt Mikkelsen, Caroline Lyttle, Denise Fisher, Dimity Gregson, Fern York, Jane Button, Jeanne Armstrong, Jenny Kerr, Joanne Francis, John Eden, Julie Hein, June Edwards, Lesley Parker, Louise Hamill, Louise Wells, Madeline Clear, Madeline Tholen, Mary Ann Dawson, Melissa De Winter, Sally Wilson, Sarah Keirle, Sarah Pondevie, Sarah Thornton-Smith, Sioux Tempest, Stuart Elliott, Tami Esancy, Una Bell, Vanessa Curley and Veta Holmes.

“

*I am part of this garden and depend on it. It teaches me as I reflect on the constancy of the seasons. It is an unending source of pleasure, creativity, and wonder.*

— J Hein



52

## EXHIBITION PROGRAM

MIDLAND JUNCTION ARTS CENTRE

14 NOV 2020 - 30 JAN 2021

### YOOWALKOORL - COME ON, COME HERE

EAST & WEST GALLERY

Bringing together Aboriginal artists from across Western Australia with connections to Aboriginal Art Centre Hub of Western Australia (AACHWA) and Midland Junction Arts Centre, *Yoowalkoorl*, meaning 'come on, come here' in Bibbulmun/Noongar was a blend of exhibition and marketplace celebrating the work of Indigenous artists from across the state.

“

*A delightful look at dynamic artworks by Indigenous artists from across Western Australia...each piece presents an individual narrative in visually engaging ways*

— E Viney

*Phil Walley-Stack's performance was memorising, a stunning blend of conversation, exceptional music and enchanting visuals, a great way to launch the new tech at Midland Junction*

— F Macey

950

VISITORS

47

ARTISTS FEATURED

219

PUBLIC PROGRAM PARTICIPANTS

SUPPORTED BY

City of Swan and AACHWA Arts worker program: North Metro TAFE, WA Museum Boola Bardip, Art Gallery of WA; Exhibition and Public Program: Department of Local Government Sport and Cultural Industries, Fringe, Lotterywest, Gather Foods, Phil Walleystack, Vaughn McQuire, Deadly Denim, Maalinup Aboriginal Gallery, Tyrown Waigana, Lea Taylor and John Mogridge, Ingrid Mulder, Peter Dailey, Martumili Artists, Mowanjum Aboriginal Art and Culture Centre, Nagula Jarndu Designs, Papulankutja Artists, Tjarlirli Art Centre, Tjukurba Art Gallery/Birriliburu Artists, Warakurna Artists, Waringarri Aboriginal Arts and Kira Kiro Kalumburu Art Centre.



53



54



55

20 FEB - 24 APR 2021

## TAKE ONLY MEMORIES

EAST GALLERY

Curated by Melissa McGrath

Bringing together the work of recent graduates from Perth's tertiary art schools, *Take Only Memories* charted a pathway through landscapes as sites for history, communication, healing and contemplation.

Artists Featured: Reece Cahill, Inez Edwards, Sarah McFarlane and Harrison Rieke

“

*Wonderfully balanced exhibition...great curation and nice to see quality, new graduate work exploring place and technology.*

— B Foster



56

## OUT OF THE SEA

WEST GALLERY & PROJECT SPACE

Responding to the iconic Canal Rocks site near Margaret River, artists and designers explored qualities of place at the edge of land and sea via a breadth of media; including laser scanning, photogrammetry, photography, drawing, video and sound recording. 360 tour available online

Artists Featured: Spatial Co (Leonie Matthews, Peter Hill and Fergus Egan), Tom Allum, Beth George, Kira Jovanovski, Matt Slocomb and Emerald Wise

“

*World class exhibition, incredibly strong and well executed works that you could expect to see in leading galleries worldwide.*

— R Donaldson, Architect

## I'M A MARRIED MAN - CHLOE NOLAN

VERANDA STUDIO

An immersive video installation by emerging artist Chloe Nolan drawing on the myth of Medusa to reimagine and disrupt the male gaze in Michael Douglas films.

625

VISITORS

8

ARTISTS FEATURED IN *OUT OF THE SEA*

4

ARTISTS FEATURED IN *TAKE ONLY MEMORIES*

SUPPORTED BY

City of Swan

Spatial Co, Barking Wolf (*Out of The Sea*)

Edith Cowan University, Curtin University, University of WA, North Metro TAFE (*Take Only Memories*)

8 MAY - 17 JUL 2021

## CRITICAL TIME

EAST GALLERY

Curated by Melissa McGrath

Time passes quickly, drags on, accelerates. Time is punctuated by momentous events. Time languishes in archives. *Critical Time* brought together artists who keep time, waste time, or chronicle time, charting tempos through meditative, accumulating, and reflective practices.

Artists Featured: Tom Freeman, Andre Lipscombe, Joana Partyka and Gemma Watson

## TAP (TACTILE ART PROJECT)

WEST GALLERY

Presented by DADAA

Curated by Oliver-Max Taylor

A showcase of tactile and multi-sensory artworks created in DADAA's Midland Hub to be touched, seen, heard and smelled. Tactile tours for the vision impaired and people with disability, vision awareness training and live performances from DADAA Midland arts groups formed part of the public program.

Artists Featured: Emily Barker, Nicklaus Bisley, Brittney Coutts, Fero Dobrovolny, Prudence Dunkley, Diedre Gillespie, Kelly Grant, Greg Harler, Betty Hemsley, Sarah Jansen, Mark Landon, Aidan Leahy, Nadia Leahy, Tim Maley, Debby Mandat, Ann McGrath, Katelyn Murphy, Leon Ng, Sharon Pearce, Mark Rae, Melissa Robinson, Jennifer Rourke, Marcus Rusbridge, Aaron Sabatino, Mike Sterling, Melaina Tatham, Oliver-Max Taylor, David Vella-Zarb, Mandy White and Beth Wilcox

## BLUE BEAUTIFUL - DYLAN MADURUN

PROJECT SPACE

Presented by DADAA

An installation developed with the support of a 2019 Nexus Grant. Emerging artist Dylan Madurun presented 23 works that connected a variety of subject matter with his favourite colour, blue.

941

VISITORS

4

ARTISTS FEATURED IN *CRITICAL TIME*

29

ARTISTS FEATURED IN *TAP (TEXTILE ART PROJECT)*

SUPPORTED BY

City of Swan



57



58

### HYPERVISION: BLOOM

EAST, WEST & HALLWAY GALLERIES

Presented by the City of Swan Hyper Team

Promoting the creative expression and talents of young people aged 15 – 25 years from across WA. 52 artforms in a diverse range of traditional and experimental media, including film, digital and sculptural installations responded to the question, "What does it really mean to bloom, to shine, and what inspires growth".

“

It was so important to show my work here, the work is a tribute to my grandfather who passed away in March, he used to teach at MJAC when it was the Midland TAFE, so it feels significant.

– Emily

273

VISITORS

49

ARTISTS FEATURED

SUPPORTED BY

City of Swan



62



63

4 SEP - 30 OCT 2021

PART OF IOTA21: INDIAN OCEAN CRAFT TRIENNIAL, SUPPORTED BY LOTTERYWEST

### HOLD

EAST & WEST GALLERIES

Curated by Leanne Bray

Paying homage to the foundational artform of basketry, *HOLD* highlighted traditional craft practice through an extensive public program and a showcase of contemporary makers and historical baskets.

Invited academic and ethnobotanist Tony Cunningham shared his knowledge of traditional basket making and its application across the Indian Ocean Rim, creating 46 educational didactics, paired with his photography and 41 loaned objects with historical notes. 201 historical vessels dating back to 1880 and covering a range of periods, geographies, and construction methods, provided a rich celebration of craft and collection. The East Gallery featured 19 contemporary artists work with their stories presented in 2 films created by Steven Aylia. 3 artists in residence were selected for their diverse practice, engaging the public (and members of Sister Project and Indigo Junction) in the creation of new work and 2 largescale installations.

Artists Featured: Gemma Ben-Ary, Sian Boucherd, Kate Campbell-Pope, Mikaela Castledine, Merle Davis, Dawn Gamblen, Fiona Gavino, Megan Juresa, Maxxi Minaxi May, Jan Mullen, Stella Picciotto Winn, Tania Spencer, Liliana Stafford, Katrina Virgona, Louise Wells, Anne Williams, Cecile Williams, Martien van Zuilen, and curator Leanne Bray.

“

These kinds of gatherings are so valuable, making connections among, across and within; fibre art disciplines, organisations, practitioners, materials and more.

– Martien van Zuilen



59



60



61

1,820

VISITORS

26

ARTISTS FEATURED

521

PUBLIC PROGRAM PARTICIPANTS (200 OPEN DAY)

SUPPORTED BY

Department of Local Government Sport and Cultural Industries, Indian Ocean Craft Triennial and Lotterywest

Fibre Art in Western Australia Forum held in partnership with WA Fibre and Textile Association

Key works were loaned from 16 private lenders



64



65



66



67

“

So many people of all generations were there, thoroughly enjoying the once loved hand made toys of old (on loan) together with the creative magic of toys made by local artists. Every display was full of wonder, awe and inspiration. Thank you for another outstanding exhibition.

— Cr S Howlett

39

13 NOV - 12 FEB 2022

PART OF IOTA21: INDIAN OCEAN CRAFT TRIENNIAL, SUPPORTED BY LOTTERYWEST

## TOY STORIES

EAST & WEST GALLERIES

Curated by Sarah Toohey

*Toy Stories* brought together artists, hobbyists, regional museums, and community groups in a showcase of contemporary and historic toys, handmade in Western Australia from the early 1920s to today. Presenting local craft, social history, contemporary art, and childhood experiences of past and present generations in a celebration of imagination, optimism, humour, and an unstoppable urge to play. 85 artforms in a range of media were presented.

Artists Featured: Emanuel Arkeveld, Clem Bond, Len Bunn, Kate Campbell-Pope, Paul Caporn, Crystal Chong, Jennifer Cochrane, Jane Davies, Angela Ferolla, Susan Flavell, David Gregson, Christine Groom, Geri Hayden, Adam Ismail, Theo Koning, Maxxi Minaxi May, Ellen Norrish, Sue McPhee, Danielle Ryan, Ross Smith, Robert Smith, Barry Tyrie, Yolande Yarran-Ward, Cecile Williams, Susie Vickery, and curator Sarah Toohey.

1,223

VISITORS (682 in 2021)

26

ARTISTS FEATURED

WINNER OF FRINGE  
WORLD WEEKLY AWARD  
FOR VISUAL ARTS

SUPPORTED BY

Department of Local Government  
Sport and Cultural Industries,  
Lotterywest, Indian Ocean Craft  
Triennial and Fringe World

Key works were loaned from  
Maylands Meccano Club, Narrogin  
Old Courthouse Museum, and  
Carnamah Historical Society and  
Museum



68

## ARTIST IN RESIDENCE PROGRAM

MIDLAND JUNCTION ARTS CENTRE



69

### MONIKA LUKOWSKA

18 JAN - 13 MAR 2021 | STUDIO 2

Exploring the ecology of Western Australian wetlands through her printmaking practice, Lukowska examined how art can convey the materiality of place. Residency included a series of public workshops focusing on non-toxic etching, Chine Collè, design skills and wood lithography.

### FIONA GAVINO

18 JAN - 13 MAR 2021 | STUDIO 1

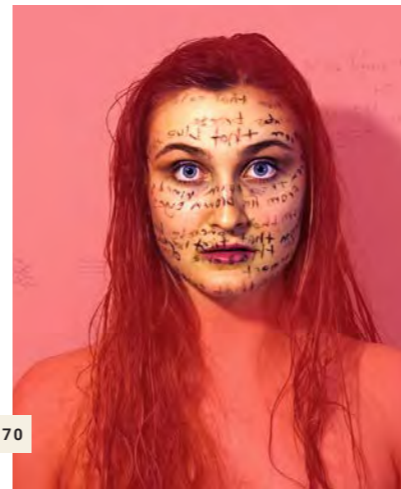
The first instalment of a two-part residency, Gavino explored a number of key issues currently playing out in contemporary society and reflected her learnings in text-based works made using printmaking and weaving.

### HAYLEE WHISSON - ONSET THEATRE COMPANY

22 Mar - 31 May 2021 | Studio 2

Redeveloping a script for a moving, high-energy theatre show that discusses and destigmatises the origins of mental health issues in our community, Whisson explored how a single moment, can influence one's beliefs.

Whisson received the Robert Juniper Award for the Arts Scholarship in December to further develop her production for 2023 Fringe World.



70

### SAM HUXTABLE - BODY OF FLUX

22 MAR - 18 JULY 2021 | STUDIO 1

Exploring physical and non-physical self in relation to change, Huxtable draws on their personal experience with HRT in conjunction with a rapidly intensifying and evolving world. Queerness and transness are in constant flux, movement, change and growth. aimed to build and present these fluxes in tangibility, viscerally, with care.

### KATIE WEST

3 MAY - 21 AUG 2021 | STUDIO 2

Katie West belongs to the Yindjibarndi people of the Pilbara tablelands and as an artist creates objects, installations and happenings that invite attention to the multiple ways we weave our stories, places, histories and futures. During her time in residence West developed work for upcoming projects - Kyneton Contemporary Art Triennial, Fremantle Biennale and Perth Festival.

### VETA HOLMES

7 JUN - 14 AUG 2021 | STUDIO 2

Holmes wove, drew into and printed with weathered housing estate banner material to create installations and ghost prints that engaged with the subjects of landscape and urban development, drawing inspiration from interstitial spaces and times in transition.



71



72

## DADAA ARTISTS

20 JUL - 18 SEP 2021 | STUDIO 1

Artists connected to DADAA's Midland Hub worked in residence across a variety of mediums. DADAA is a leading arts and health organisation that creates access to cultural activities for people with disability or mental illness.

### MANDY WHITE

White (Yamatji heritage) created new works, that often featured "Hairy bush creatures," inspired by traditional stories that her mother shared with her when she was young. These were presented in 'Art to Roam' to support the International Fund for Animal Welfare (IFAW) and for the Joondalup Invitation Art Prize.

### CHRISTOPHER HUMMEL

Hummel, a 19-year-old emerging artist from Perth's northern suburbs, loves to virtually travel and "go on holidays in my head," where he visits and admires different trains from around the world and the graffiti that is on them. During his residency, Hummel developed works for the State Theatre Centre as part of the 2021 AWESOME Festival.

“

*This residency significantly contributed to important career steps for these artists... Your long years in supporting DADAA, its team and artists is hugely valued!*

— David Doyle



73



74



77



78

### TANIA SPENCER

20 SEP - 3 OCT 2021 | VERANDA STUDIO

Spencer is a multi-media artist working with recycled and found materials. For this residency she shared metal weaving techniques through public workshops and created a largescale colourful installation in the garden entrance of Midland Junction Arts Centre.

Living and working rurally from Lake Grace, exhibiting since 2000 across Western Australia as well as in Adelaide, Sydney and Japan.

### FIONA GAVINO

18 - 31 OCT 2021 | VERANDA STUDIO

Gavino is a nationally recognised fibre artist and educator, currently working with mobius forms, reflecting on past cultural traditions, and encouraging evolutionary dialogue. For the second part of the two-part residency, members of the public and workshop participants worked collaboratively to create sculptural fibre weaving and word installations.

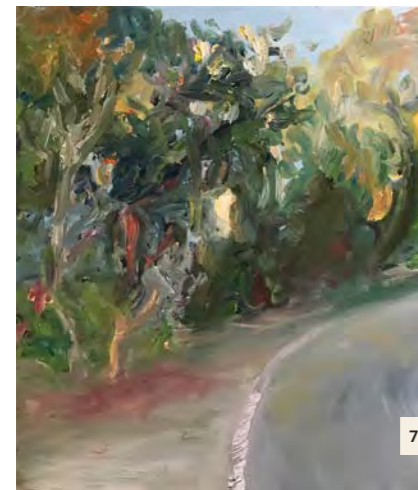
### SUZANNE INGELBRECHT - 2 MARYS WITH FRAGMENTED ARTISTS

1 NOV - 18 DEC 2021 | STUDIO 2

An ensemble development process led by playwright and director Suzanne Ingelbrecht to create a masquerade of storytelling, music and gothic romance, based on a true story featuring Frankenstein creator Mary Shelley and her friend, the writer, Mary Diana Dods. The residency further developed a script produced while in residence at Katharine Susannah Prichard Writers' Centre. Artists created shadow play projections and rehearsed the live performance to be presented for Fringe in 2022.

SUPPORTED BY

Department of Local Government, Sport and Cultural Industries and Curtin University



75

### ANNETTE PETERSON

23 AUG - 23 OCT 2021 | STUDIO 2

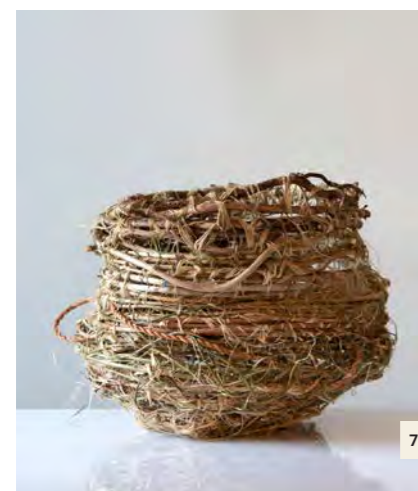
Exploring how painting place brings the past and present together, Peterson researched the landscape of Parkerville through a series of plein air paintings of the site and through documentation of her father's recollections of his time spent there as a child.

### LILIANA STAFFORD

30 AUG - 12 SEP 2021 | VERANDA STUDIO

Stafford created a woven structure in the Midland Junction Arts Centre hallway in collaboration with members of the public as part of *HOLD*. Using natural fibres and found objects, the aim was to create a nest, a place of rest that hadn't existed in the world.

Winner of the 2020 Castaways Sculpture Alcoa Major Award, Stafford describes herself as a storyteller through art, finding inspiration and materials on regular walks in the natural wetland near her home.



76



79





80



81

## EXTERNAL EXHIBITION

8 NOV - 5 FEB 2022

### RECONNECT

BOYA COMMUNITY CENTRE

A partnership project designed to develop and share photography skills while celebrating iconic local places.

With the support of the Shire of Mundaring's COVID-19 response funding, a series of photographic skill-building workshops in Portraiture, Astro Photography, Urban Landscapes and Architectural Imagery invited members from various camera clubs and community members to connect and create new work. 36 photographs were presented.

Artists Featured: Ben Jackson, Bernadette Waugh, Chris Jackson, Chris Oakeley, Jenny Utting, Jocelyn Manning, Patricia Golding, Paul Bastian, René Baur, Richard Goodwin, Ron Dullard, Ron Jennings, Robert Woodbury and Susi Nodding

~11,000

VISITORS

14

ARTISTS FEATURED

SUPPORTED BY

Shire of Mundaring, Mundaring Camera Club, Boya Community Centre and MAC Inc.

## THE SHOP

SHOP MANAGER

### KRISTY SCADDAN

The MAC Inc. Shop is the premier outlet for high-quality arts and crafts in the eastern region of Perth. Showcasing the work of over 200 emerging and established artists from Western Australia, the Shop promotes and supports local cultural practice.

Often curated to compliment the Gallery offerings, this retail space has become highly regarded as a place to purchase unique handmade artforms.

The MAC Inc. online Shop opened in 2020 in response to COVID-19 and has steadily grown in popularity, promoting a diverse selection of contemporary arts to a national, regional and international audience

Despite the 2021 COVID-19 closures, the Shop in Mundaring and two pop-up retail events hosted at Midland Junction Arts Centre, returned ~\$129,000 in sales, a \$13,000 increase from 2020.

The Shop in Mundaring is open free to the public six days a week and supported by an exceptional team of volunteers attracting ~8,050 visitors in 2021.

New emerging designers and artists showcased in 2021 included Shanti Gelmi, Emma Lashmar, Benn Francis, Libby Watson, Heather Alves, Rebecca Tester, Marie Mitchell, Emily ten Raa, Louise Hamill, Talitha Huston and Helena Waldmann.



82

## COLLECTION MANAGEMENT AND PLACE ACTIVATION

MAC Inc. manages the Shire of Mundaring Moveable Art Collection. Rotating, maintaining, overseeing acquisitions and cataloguing artworks, utilising an online database as a management tool. MAC Inc. is engaged to provide direction for arts and cultural development, acting in an advisory and managerial capacity on committees, projects, advisory groups and in the development of policies. This includes project management, valuations and assessments of new public art projects for local government. MAC Inc. plays an active role on the Shire of Mundaring Cultural Advisory Group and Mundaring Community Sculpture Park Committee. Currently MAC Inc. manages the sculptures in the Mundaring Community Sculpture Park and Shire of Mundaring Administration grounds, regularly assessing these works, with an annual budget allocated for maintenance.

A team of volunteers were enlisted to discuss the Mundaring Town Centre Redevelopment Plan and set a vision for a new cultural centre in Mundaring.



83

## MIDLAND JUNCTION VENUE HIRE

Despite intermittent closures due to COVID-19, MJAC welcomed over 35 community groups, with total attendance to these community-run programs reaching over 17,300 participants. Hirers included local artists, art groups, and not-for-profits, as well as health and community-focused organisations. Commercial enterprises and Government groups also made up a small portion of these bookings.

Highlights of the 2021 community-run program included on-going relationships with Indigo Junction, AACHWA, DADAA, DesignCite, Hills Symphony Orchestra, Barking Gecko Theatre, Trinity Irish Dance Studio and Veenas School of Indian Dance among many others.

2021 saw the launch of an audio and visual upgrade in the Auditorium that attracted new performing arts presentations including: Cameron McLaren's hilarious "6056" Comedy performances for Fringe; The Last Great Hunt; Whiskey and Boots' *Mama Stitch*; Open Lid Ensemble; Perth Festival and the Maker and Smith Film Festival.



84

## OUR PARTNERS

*MAC Inc. nurtures collaborative relationships with external stakeholders, such as artists and their representatives, other galleries, universities, schools, the business sector, the media, the Government and the wider community. These relationships help us to present programs of significant value.*

### FINANCIAL PARTNERS

City of Swan  
 Shire of Mundaring  
 Department of Local Government, Sport and Cultural Industries WA  
 Lotterywest  
 Healthway  
 Creative Partnerships Australia  
 St John of God Midland Public and Private Hospital  
 EMRC (Eastern Metropolitan Regional Council)  
 Jacksons Drawing Supplies  
 Framing Factory

### PROJECT PARTNERS

#### PRIMARY SCHOOLS

Shire of Mundaring:  
 Bakers Hill, Chidlow, Glen Forrest, Helena College, Mount Helena, Mundaring, Parkerville, Pickering Brook, Sacred Heart, Sawyers Valley, Silver Tree Steiner, Swan View and Treetops Montessori School  
 City of Swan:  
 Anne Hamersley, Aveley, Caversham Valley, Gidgegannup, Guildford, Helena River Steiner School, Helena Valley, Malvern Springs, Moorditj Noongar Community College, South Ballajura, Richmond and Upper Swan

#### SECONDARY SCHOOLS

Kalamunda SHS, Swan Christian College, Mundaring Christian College, Swan Anglican, Swan View SHS, Northam SHS and Perth College

#### OTHER

Aboriginal Arts Centre Hub WA  
 Art Gallery of Western Australia  
 Avon Descent  
 BOSS Centre Midland  
 Blank Space  
 Bright Press  
 Carnamah Historical Society and Museum



85

Chamber of Arts and Culture WA  
 Chung Wah Lion Dance Troupe  
 Community Arts Network  
 Cumin Cook  
 Curtin University  
 DADAA Fremantle and Midland  
 Darlington History Group  
 Deadly Denim  
 Eastern Metropolitan Regional Council  
 Edith Cowan University  
 Elements Chocolate  
 Fremantle Arts Centre  
 Fringe World  
 Gather Foods  
 Hill Billie Wines  
 Hopkinson Consulting  
 Hyper Team City of Swan  
 Indian Ocean Craft Triennial Group  
 Indigo Junction Midland  
 Jacksons Drawing Supplies  
 Jeanette Garlett  
 John Mogridge  
 Katharine Susannah Prichard Writers' Centre  
 Kira Kiro Kalumburu Art Centre  
 Kerramic Studio  
 KoreEarth  
 Little Design Farm  
 LoCale  
 Midland Gate

Maalinup Aboriginal Gallery  
 Make, Bake, Serve, Preserve Pop Up Potters  
 Maker and Smith  
 Martumili Artists  
 Midland Junction Collective  
 Midland Libraries  
 Mowanjum Aboriginal Art and Culture Centre  
 Mundaring and Boya Libraries  
 Mundaring and Hills Historical Society  
 Mundaring Bicentennial Scholarship Trust  
 Mundaring Camera Club  
 Mundaring Chamber of Commerce  
 Mundaring District Museum  
 Mundaring Adult and Creative Learning Centre  
 Mundaring and Mount Helena Country Women's Association  
 Mundaring Men's Shed  
 Mundaring Visitor Centre  
 Nagula Jarndu Designs  
 Narrogin Old Courthouse Museum  
 North Metropolitan TAFE  
 Papulankutja Artists  
 Perth Hills Future Perth Hills  
 Perth Festival  
 Printmakers Association of WA  
 Rotary Club of Mundaring  
 Shire of Mundaring Environmental

Advisory Committee  
 Short Street Kitchen  
 Slow Food Convivium  
 Swan Active  
 Swan View Youth Centre  
 Swan Volunteer Resource Centre  
 Talkie Tearooms  
 Tjarlirli Art Centre  
 Tjukurba Art Gallery/Birrilburu Artists  
 University of Western Australia  
 Upbeat Events  
 Vaughn McQuire  
 Walker Wayland WA  
 WA Fibre and Textiles Association  
 WA Museum - Boola Bardip  
 Warakurna Artists  
 Waringarri Aboriginal Arts Centre  
 Whiskey and Boots  
 White Peacock Studios

## OUR TEAM

### BOARD

Chairperson: Jenny Kerr  
Deputy Chairperson: André Lipscombe  
Treasurer: Dr Marilyn Clark-Murphy  
Secretary: Amanda Alderson to Oct  
Shire of Mundaring Delegate: Cr Kate Driver to Oct and Cr Neridah Zlatnik from Oct  
Board Members: Bruce Leyland, Annalisa Oxenburgh, Yvonne Tessensohn, Leanne Bray, Kate Parker from Oct, and Bree Fomenko from Dec

### STAFF

Director: Jennifer Haynes  
Finance Controller: Narelle Doran  
Curator: Melissa McGrath to Nov 2021  
Exhibition Administrator: Sophie Hick from Oct 2021  
Education Program Manager: Ellen Norrish to April 2021  
Communications and Bookings Manager: Jess Boyce to April 2021  
Education Program Manager: Jess Boyce from April 2021  
Bookings Officer: Kelsey Douglas to April 2021  
Bookings Officer: Shannon Baggott from April 2021  
Communications Officer: Shannon Pearce from May 2021  
IOTA Festival Content Manager: Kelsey Douglas from April 2021  
Communications and Marketing Officer: Ella McDonald  
Shop Manager: Kristy Scaddan  
Shop Assistants: Monika Haag, Rafael Leone and Morgyn Dreaver  
Administrative Assistant and Kiln Technician: Clare Stroud  
Workshop Technical Support: Liz Knuckey



86

### MAC INC MEMBERS

MAC Inc. is a not-for-profit membership-based organisation, that grows with community involvement and participation. Annual Memberships are available to individuals, businesses, schools and organisations. At the end of December 2021 there were 452 Financial MAC Inc. Members

### THANK YOU TO THE VOLUNTEERS WHO SUPPORT MAC INC.

Karen Adie, Terri Andrews, Carola Akindele-Obe, Rodney Bayliss, Anastasia Beasley, John Beaton, Jane Button, Leanne Bray, David Brockway, Mikaela Castledine, Dr Marilyn Clark-Murphy, Louise Cook, Jackie Davis, Mary Ann Dawson, Nikki Day, Heli Donaldson, Ron Dullard, Vicky Dodds, Morgyn Dreaver, Charlotte Eden, Sophie Eden, Anthea Elsner, Rosetta Elsner, Tami Esancy, Belinda Foster, Carolyn Francis, Geoff Francis, Monika Haag, Marie Haass, Sarah Harrington, Tracy Hart, Monika Haag, Lisa Hegarty, Kim Hearne, Sophie Hick, Muriel Hillion, Amy Hussey, Anubhav Khandelwal, Bernard Kerr, Jenny Kerr, Carol Lagdon, David Leith, Rafael Leone, Bruce Leyland, Cathy Levett, André Lipscombe, Sue Lynch, Ben Lowther, Helen Majewski, Matthews and McDonald, Denis McLeod, John Mogridge, Liz Odd, Nina O'Rourke, Annalisa Oxenburgh, Deanne Parker, Kate Parker, Jane Pearsall, Diviya Rathinam Alagappan, Cathy Swioklo, Ava Tassone, Yvonne Tessensohn, Dale Tilbrook, Madeline Tholen, Sarah Thornton-Smith, Sarah Toohey, Paul Trinidad, Marina van Leeuwen, Jude van der Merwe, Peter Vitalich, Anne Williams, Lynne Williams, Kate Woodall, Rod Warnock and Jemimah Wylde, Baige Zylstra.

### WORK EXPERIENCE STUDENTS

MAC Inc. engages high school and tertiary students as volunteers, offering mentorship through projects, exhibition installs and invigilation as well as general work experience.

Rylan Kelly (Swan Christian College), Jamie Purvis (La Salle College), Ava Tassone (Swan Christian College), Jade Elise Smith (Curtin Intern), Joanne Parfitt and Kody Bacon (Mentees).



## IMAGE CREDITS

Cover: Nalda Searles, *Kangaroo couple*, 1995 - 2008, woollen gown, plant-dyed silk, Xanthorrhoea bracts, silk strings, common fodder, cotton mannequins, 173 x 56 x 36cm (white), 190 x 66 x 39cm (brown). Kerry Stokes Collection, Perth. Photograph by Rebecca Mansell; Fiona Gavino, MJAC Artist in Residence. Photograph by Rebecca Mansell; Sian Boucher, *Forgotten megafloora (scalloped gradient)* (detail), 2021, weeds, hand-dyed fair-trade raffia, dimensions variable. Photograph by Susie Blatchford; Selection of wares from the MAC Shop by Bernard Kerr, Clive Eger, Amanda Harris, Narayani Palmer, Sylvie Riches, Alison Brown, and Jenny Kerr.

- 1 John Mogridge Smoking ceremony *HOLD* Open Day. Photograph by Rae Fallon.
- 2 Figure Drawing: Difficult Details with Peter Dailey.
- 3 Stitched Blankets with Kate Campbell-Pope.
- 4 *HOLD* exhibition, 2021. Photograph by Rae Fallon.
- 5 Joana Partyka, *God's Work*, 2021, coloured stoneware, glaze, gold lustre, 14.5 x 7cm. Photograph by Cameron Etchells.
- 6 Beginner's Wire Jewellery with Tineke Van der Eecken.
- 7 Visitor viewing Michelle Campbell's *Urban Doppelganger*, 2018, oil on canvas 67 x 102cm. Photograph by Andrea Elsner.
- 8 Wheel Throwing with Greg Crowe.
- 9 Iain Dean, *There is no escape, burn it down, give up on me* (detail), 2019 - 2020, timber, oil paint, stoneware, charcoal, spray paint, 189.5 x 83 x 83cm. Photograph by Rebecca Mansell.
- 10 Beloved Bowls with Kaitlyn Elsegood, *HOLD* Open Day. Photograph by Rae Fallon.
- 11 Visitor viewing Nalda Searles, *Kaarnka...crow crown*, 1995, burnt marri twigs, eucalyptus dyed silk, black stones, cut tin, 43 x 34 x 30cm. Kerry Stokes Collection, Perth. Photograph by Rebecca Mansell.
- 12 Monoprinting with Bina Butcher, *HOLD* Open Day. Photograph by Rae Fallon.
- 13 An Evening with Phil Walley-Stack, FRINGE WORLD Festival. Photograph by Susie Blatchford.
- 14 Whiskey and Boots. Photograph by Fionn Mulholland.
- 15 Dance Classes for Over 55's with Lynne Williams.
- 16 Screenshot from Act Belong Commit Caring for Country video tutorial.
- 17 Screenshot from Act Belong Commit Caring for Country Project video tutorial.
- 18 Winners of the Swan Act Belong Commit Caring for Country Project. Photograph by Rae Fallon.
- 19 Act Belong Commit Caring for Country Project banner in Guildford.
- 20 Act Belong Commit Caring for Country Project banners in Mundaring.
- 21 Winners of the Mundaring Act Belong Commit Caring for Country Project.
- 22 Have a Go! Clay Plates with Bernard Kerr, *Food for Thought* at Mundaring Markets. Photograph by Rebecca Mansell.
- 23 Coiled Kitchen Containers with Leanne Bray.
- 24 Bush Tucker Talk and Tasting with Dale Tilbrook, *Food for Thought* at Mundaring Markets. Photograph by Rebecca Mansell.
- 25 Kung-Fu Tea Ceremony with Carol Natalotto, *Food for Thought* at Mundaring Markets. Photograph by Rebecca Mansell.
- 26 Chung Wah Lion Dance, *Food for Thought* at Mundaring Markets. Photograph by Rebecca Mansell.
- 27 *Finders Keepers* Artist and Curator Talk.
- 28 Beginner's Wire Jewellery with Tineke Van der Eecken.
- 29 Tall Felted Vessels with Martien van Zuilen.
- 30 Shire of Mundaring Christmas Tree.
- 31 Coil and Slab with Bernard Kerr.
- 32 Resolve an Oil Painting with Harrison See.
- 33 Itajime and Ori-Nui Shibori with Vicki Ames.

- 34 1-Day Wheel Throwing with Robbie Kerr.
- 35 Print Studio Essentials with Paul Trinidad.
- 36 Coiling with Cloth with Leanne Bray.
- 37 *HOLD* exhibition, 2021. Photograph by Rae Fallon.
- 38 Nalda Searles, *Finders Keepers* exhibition, 2021. Photograph by Rebecca Mansell.
- 39 Vicki Ames, *Brown Balustrade*, 2020, Ori-Nuri Shibori-dyed fabric and hand embroidery, 55 x 62cm.
- 40 Visitor views Vicki Ames, *Rustification Inventory*, 2020 - 2021, Arashi Shibori fabric, Ori-Nuri Shibori-dyed fabric, Itajime Shibori-dyed fabric, hand-painted fabric, and hand embroidery, 22.5 x 30cm (each).
- 41 Smart Club, *Brainstorm* (detail), 2021, works on paper. Photograph by Rebecca Mansell.
- 42 Amanda Alderson, *sheild: protect* (brass, titanium), 2019 - 2021, brass, titanium, sterling silver, hemp, wool, wood, ceramic and glass beads, glass eye, wax, 64 x 124cm. Acquired by the Shire of Mundaring Art Collection. Photograph by Rebecca Mansell.
- 43 Visitors viewing Michelle Campbell, *Urban Green*, 2020, oil on canvas, 67 x 102cm. Photograph by Andrea Elsner.
- 44 Michelle Campbell, *Urban Still Life* (detail), 2017, oil on canvas, 84 x 91cm.
- 45 Workshop during Bernard Kerr's residency, *Food for Thought* at Mundaring Adult Creative and Learning Centre. Photograph by Rebecca De Vries.
- 46 Bernard Kerr working in residence, *Food for Thought* at Mundaring Adult Creative and Learning Centre. Photograph by Rebecca De Vries.
- 47 Nalda Searles, *Kangaroo couple*, 1995 - 2008, woollen gown, plant-dyed silk, Xanthorrhoea bracts, silk strings, common fodder, cotton mannequins, 173 x 56 x 36cm (white), 190 x 66 x 39cm (brown). Kerry Stokes Collection, Perth. Photograph by Rebecca Mansell.
- 48 Sandra Murray, Nalda Searles, and Andrew Nicholls at opening of *Finders Keepers*. Photograph by Rebecca Mansell.
- 49 Tineke Van der Eecken, *This Ochre Land*, 2021, sterling silver, red-yellow-white Mookaite. Yasmin Eghtesadi.
- 50 Tineke Van der Eecken, *Tread lightly*, 2021, corrosion cast horse hoof courtesy of Dr Christophe Casteleyn and Dr Sofie Muylle, Department of Morphology, Ghent University, 33 x 7 x 8cm. Photograph by Yasmin Eghtesadi.
- 51 Fern York, *Djeran View from Nari's Place*, 2020, oil on wooden box lid, 21.5 x 15 x 2.5cm.
- 52 *HOLD* exhibition, 2021. Photograph by Rae Fallon.
- 53 Martha Lee, *Mangoes*, screen print on silk, 300 x 137cm. Photograph by Rebecca Mansell.
- 54 Tjilyngoo Lance Chadd, *Toolybinup*, 2012, acrylic on canvas, 80 x 90cm. Photograph by Rebecca Mansell.
- 55 Harrison Riekie, *Hidden Vista* (detail), 2020, film, photographic prints. Photograph by Pascal Hutchinson.
- 56 SpatialCo, *Canal\_Rocks\_Plan\_001*, 2020, digital print on 308 gsm Hahnemühle, 111 x 111cm, edition of 5, 51 x 51cm, edition of 10.
- 57 Dylan Madurun, *Blue Heaven Sturpee*, 2020, acrylic and spraypaint, 150 x 120cm. Photograph by Tom Linden-Wood.
- 58 Gemma Watson, *swamp feelings*, October 2020, pen on 200gsm paper, 29.7 x 21cm. Photograph by Cameron Etchells.
- 59 Grace Abbott, *My Mate From Mandjar*, photographic print.
- 60 Emily Crawford, *Memories Tethered*, watercolour, ink, pastel, split rings, and embroidery floss on archival and yupo paper.
- 61 *HyperVision: Bloom* exhibition, 2021.
- 62 Louise Wells, *Through all our senses* (detail), 2021, textile remnants, dimensions variable. Photograph by Susie Blatchford.
- 63 *HOLD* exhibition, 2021. Photograph by Susie

- Blatchford.
- 64 Geri Hayden, *Koort Wangkiny - Heart Stories*, 2017, fabric, wool, thread, filling, ribbon.
- 65 Maxxi Minaxi May, *It's A (Plastic) Toy World* (detail), 2021, recycled toys, mixed media.
- 66 Theo Koning, *Duckshound*, 2003, paint on wood.
- 67 Susie Vickery, *Tibetan Toys* in *Toy Stories* exhibition, 2021.
- 68 Fiona Gavino working in residence, *HOLD* Open Day. Photograph by Rae Fallon.
- 69 Monika Lukowska, *Memory of place I* (detail), 2019, digital print, 120 x 240cm.
- 70 Onset Theatre Company, *ONSET* (detail), 2017.
- 71 Sam Huxtable, *Fluxing Transcience I* (detail), 2020, digital media, dimensions variable.
- 72 Katie West, *Clearing*, 2019 (installation view). Photograph by Andrew Curtis.
- 73 Mandy White, *Partying Dancing Creatures* at Kalyakoorl, Ellenbrook Arts Centre, 2020. Photograph courtesy of DADAA.
- 74 Christopher Hummel, *Graffitied Regional Local Scotrail Class 320*, 2021, acrylic on canvas, 76 x 102cm. Photograph courtesy of DADAA.
- 75 Annette Peterson, *The more I looked, the more I pondered*, oil on board, 40 x 40cm.
- 76 Liliana Stafford, *Autumn days*, 2021, vines, fibre, 20 x 20 x 18cm.
- 77 Tania Spencer, wire bird sculpture.
- 78 Shirley Van Sanden as Mary Diana Dods in *2 Marys* by Suzanne Ingelbrecht. Photograph by Chris Horgan, Organic Productions.
- 79 Fiona Gavino, woven fibre letters made during residency. Photograph by Rae Fallon.
- 80 *Reconnect* winners Ben Jackson and Jocelyn Manning with Ron Dullard and Cr James Martin.
- 81 Jocelyn Manning, *Stairways to Heaven* (detail), 2021, digital photograph, *Reconnect* photography competition winner.
- 82 Mundaring Arts Centre Shop. Photograph by Rebecca Mansell.
- 83 Bernard Kerr working in residence, *Food for Thought* at Mundaring Adult Creative and Learning Centre. Photograph by Rebecca De Vries.
- 84 An Evening with Phil Walley-Stack, FRINGE WORLD Festival. Photograph by Susie Blatchford.
- 85 Education Manager Jess Boyce with members of the Sister Project, *HOLD* Open Day. Photograph by Rae Fallon.
- 86 Visitors at Mundaring Arts Centre Shop. Photograph by Rebecca Mansell.
- 87 Tineke Van der Eecken working in her studio. Photograph by Miles Tweedie.



7190 Great Eastern Highway Mundaring WA 6073

T: 08 9295 3991 | [info@mundaringartscentre.com.au](mailto:info@mundaringartscentre.com.au)

Open Tue - Fri 10am - 5pm, Sat - Sun 11am - 3pm  
Closed Public Holidays

**[MUNDARINGARTSCENTRE.COM.AU](http://MUNDARINGARTSCENTRE.COM.AU)**

## Midland Junction Arts Centre

MANAGED BY MUNDARING ARTS CENTRE INC | SUPPORTED BY CITY OF SWAN

276 Great Eastern Highway Midland WA 6056

T: 08 9250 8062 | [info@midlandjunctionartscentre.com.au](mailto:info@midlandjunctionartscentre.com.au)

Open Wed - Fri 10am - 5pm, Sat 11am - 3pm  
Closed Public Holidays

**[MIDLANDJUNCTIONARTSCENTRE.COM.AU](http://MIDLANDJUNCTIONARTSCENTRE.COM.AU)**

